



A G E N D A

Wednesday, May 27, 2026

10:15 AM

← Note: New Time

**Placer County Board of Supervisors
175 Fulweiler Avenue, Auburn CA 95603**

PUBLIC PARTICIPATION PROCEDURES

PUBLIC PARTICIPATION INSTRUCTIONS: This meeting will be conducted as an in-person meeting at the locations noted above. A remote teleconference Zoom address is listed for the public's convenience and in the event a Board Member requests remote participation due to just cause or emergency circumstances pursuant to Government Code section 54953(f). Please be advised that if a Board Member is not participating in the meeting remotely, remote participation for members of the public is provided for convenience only, and in the event that the Zoom connection malfunctions for any reason, the Board of Directors reserves the right to conduct the meeting without remote access. By participating in this meeting, you acknowledge that you are being recorded.

Agendas, Supplemental Materials and Minutes of the Board of Directors are available on the internet at: <https://www.pctpa.net/sprta-meetings>. Public records related to an agenda item that are distributed less than 72 hours before this meeting are available for public inspection during normal business hours at the Agency office located at 2260 Douglas Blvd., Suite 130, Roseville, California and will be made available to the public on the Agency website.

Remote access: <https://placer-ca-gov.zoom.us/j/94810157440>

You can also dial in using your phone: +1 669 900 6833 **Webinar ID:** 948 1015 7440

A. Flag Salute

B. Roll Call

C. Meeting Procedures

Solvi Sabol, Clerk to the Board

D. Agenda Review

Matt Click, Executive Director

Info

E. Approval of Minutes: March 25, 2026

**Action
Pg. 1**

- F. Public Comment**
Persons may address the Board on items not on this agenda. Please limit comments to three (3) minutes.
- G. Consent Calendar** **Action**
Pg. 3
These items are expected to be routine and noncontroversial. They will be acted upon by the Board at one time without discussion. Any Board member, staff member, or interested citizen may request an item be removed from the consent calendar for discussion.
1. Authorize the Executive Director to Negotiate and Sign the Temporary Construction Easement (TCE) Extension Agreements for the SR 49 Sidewalk Gap Closure Project –\$10,000
- H. I-80/SR 65 Interchange Value Engineering Workshop Recap** **Info**
Pg. 4
- I. Regional Transportation and Air Quality Mitigation Fee Allocation Request for Sierra College Blvd., Widening Segment 1** **Action**
Pg. 6
- Adopt Resolution #26-03 to allocate \$8,000,000 of Regional Transportation and Air Quality Mitigation Fees to the County of Placer for the design and construction of a traffic signal at the intersection of Sierra College Blvd & Twelve Bridges Drive.
- J. FY 2025/26 Administrative Budget – Amendment #1** **Action**
Pg. 12
- Approve Amendment #1 of the FY 2025/26 Administrative Budget for the administration of the South Placer Regional Transportation Authority.
- K. FY 2026/27 Administrative Budget** **Action**
Pg. 14
- Approve the FY 2026/27 Administrative Budget (Attachment 1) for the administration of the South Placer Regional Transportation Authority.
- L. Executive Director’s Report** **Info**
- M. Board Direction to Staff**
- N. Informational Items** **Info**
1. SPRTA TAC Minutes: April 14, 2026 Pg. 16
 2. SPRTA TAC Minutes: May 12, 2026 Pg. 18
 3. SPRTA Statement of Net Position ending March 2026 Separate

**Next regularly scheduled SPRTA Board Meeting
June 24, 2026**



ACTION MINUTES

March 25, 2026

A meeting of the South Placer Regional Transportation Authority (SPRTA) Board convened on Wednesday, March 25, 2026, at 11:01 AM at the Placer County Board of Supervisors Chambers, 175 Fulweiler Avenue, California.

Board of Directors Roll Call:

- Ben Brown, Chair - City of Lincoln
- Ken Broadway, Vice Chair – City of Rocklin (Attended Remotely)
- Bruce Houdesheldt - City of Roseville
- Suzanne Jones, Chair- Placer County

Staff in Attendance:

- Matt Click
- Mike Costa
- David Melko
- Jodi LaCosse
- Cory Peterson
- Solvi Sabol

Agenda Review

No changes to the March 25, 2026 SPRTA Board of Directors agenda.

Approval of Action Minutes: January 28, 2026

A motion to approve the January 28, 2026 Action Minutes was made by Jones, seconded by Houdesheldt. The motion passed by the following roll call vote: **AYES:** Brown, Broadway, Houdesheldt, Jones. **NOES:** None. **ABSENT:** None.

Public Comment

No public comment was provided.

Consent Calendar

A motion to the SPRTA Consent Calendar items as shown below was made by Houdesheldt and seconded by Broadway. A motion to approve the March 25, 2026 Consent Calendar was made by Houdesheldt seconded by Jones. The motion passed with the following roll call vote: **AYES:** Brown, Broadway, Houdesheldt, Jones. **NOES:** None. **ABSENT:** None.

1. Accept FY 2024/25 Audited Financial Statements

PUBLIC HEARING: South Placer Regional Transportation Regional Transportation and Air Quality Mitigation Fee Program Fee Adjustment 2026

Presentation: Cory Peterson, Senior Transportation Planner.

Chair Brown opened the public hearing. No public testimony was provided. Chair Brown closed the public hearing.

Upon motion by Houdesheldt, seconded by Brown, the Board approved adopting a 1.548% inflationary adjustment to the South Placer Regional Transportation and Air Quality

Mitigation Fee schedule, effective July 1, 2026 by the following roll call vote: **AYES:** Brown, Broadway, Houdesheldt, Jones. **NOES:** None. **ABSENT:** None.

Adjourn

The SPRTA Board meeting concluded at approximately 11:06 a.m. A video of this meeting can be viewed here: [March 25 2026 SPRTA Board Mtg](#)

Next Regularly Scheduled Board Meeting: May 27, 2026.

Matt Click, Executive Director

Ben Brown, Chair

Solvi Sabol, Clerk of the Board



City of Lincoln • City of Rocklin • City of Roseville • Placer County

TO: SPRTA Board of Directors

DATE: May 27, 2026

FROM: Matt Click, Executive Director

SUBJECT: CONSENT CALENDAR

Below is the Consent Calendar item for the May 27, 2026, agenda for your review and action.

1. Authorize the Executive Director to Negotiate and Sign the Temporary Construction Easement (TCE) Extension Agreements for the SR 49 Sidewalk Gap Closure Project – \$10,000

The SR 49 Sidewalk Gap Closure Project, led by PCTPA and Caltrans, is currently under construction with an anticipated completion date of August 2026. PCTPA does not have the power of eminent domain, while SPRTA does which is why SPRTA has been used to execute right-of-way activities. Due to delays in construction from unexpected utility relocations, three TCEs must be extended to allow sufficient time for the contractor to complete work in these areas. The total cost of the extensions is expected to be \$7,235 as noted in the table below, with extra funds for contingency. Staff recommends approval for the Executive Director to negotiate and sign the TCE extension agreements up to a total amount of \$10,000.

APN	Property Owner	Amount	New Expiration Date
038-113-053	SHUR Enterprises, a California General Partnership	\$4,675	08/28/26
038-113-056	Soma Rani LLC, a California limited liability company	\$2,010	08/28/26
038-121-065	Margaret Marfia, an unmarried woman	\$550	08/28/26
	TOTAL	\$7,235	

CP:



City of Lincoln • City of Rocklin • City of Roseville • Placer County

TO: SPRTA Board of Directors

DATE: May 27, 2026

FROM: David Melko, Principal Transportation Planner

SUBJECT: I-80/SR 65 INTERCHANGE VALUE ENGINEERING WORKSHOP RECAP

ACTION REQUESTED

No action is required. This item is for information only.

BACKGROUND

The I-80/SR 65 Interchange and SR 65 Widening projects have been in development for more than a decade, including planning, environmental clearance, and phased design.

Between 2010 and 2014, various concepts were evaluated based on feasibility, environmental impacts, cost, and operational performance. Concepts that did not address key issues or meet project goals were eliminated. Remaining concepts were refined into a set of alternatives, leading to the selection of preferred I-80/SR 65 Interchange and SR 65 Widening alternatives. The preferred interchange alternative received NEPA/CEQA clearance and Caltrans approval in 2016, and the preferred SR 65 Widening alternative in 2018.

A Sequencing Study completed in 2016 established the order of approximately 20 corridor improvements. In 2024, a Phasing Study was completed to outline construction steps and cost estimates in support of the November 2024 sales tax measure.

In December 2025, the PCTPA Board approved a Letter of Task Agreement with Jacobs to conduct a Value Engineering (VE) analysis, supported by Mark Thomas, Fehr & Peers, and ICF, in collaboration with Caltrans, CHP–FSP, local agencies, and independent reviewers.

DISCUSSION

PCTPA convened a Value Engineering (VE) Workshop on March 2–3, 2026, to reassess corridor priorities and identify cost-effective, fundable improvements and operational strategies to enhance safety and traffic operations over the next 10 to 20 years.

Travel patterns have evolved since 2016, particularly following COVID-19, but the corridor continues to experience significant congestion and operational challenges, and related safety concerns. While AM peak demand has decreased, PM conditions remain consistent with earlier projections. The primary constraints are the I-80 eastbound to

SPRTA Board of Directors
I-80/SR 65 Value Engineering Workshop Recap
May 27, 2026
Page 2

SR-65 northbound movement during the PM peak and the SR 65 southbound-to-I-80 westbound movement during the AM and PM peak.

The interchange is also constrained with limited right-of-way and surrounding commercial development, utility easements, environmental resources, and adjacent rail infrastructure.

Workshop participants restructured the approved interchange and SR 65 Widening preferred alternatives into smaller, independent projects to address near-term safety and capacity needs and improve competitiveness for state and federal funding. The team also identified additional operational improvement strategies. Projects were prioritized by feasibility:

- **Near-term projects:** Deliverable within 0–10 years at an estimated cost of \$50 million or less.
- **Longer-term projects:** Expected to require more than 10 years and cost between \$50 million and more than \$100 million.

Several projects will require additional traffic modeling, engineering, structural review, and environmental analysis to confirm their performance and feasibility. Staff and the consultant incorporated the VE Workshop results to develop a proposed prioritization and sequencing plan for projects scheduled within the 0–10-year timeframe. The Jacobs and Mark Thomas team will present the VE workshop findings and respond to Board questions.

DM:mbc



City of Lincoln • City of Rocklin • City of Roseville • Placer County

TO: SPRTA Board of Directors **DATE:** May 27, 2026

FROM: Cory Peterson, Senior Transportation Planner

SUBJECT: REGIONAL TRANSPORTATION AND AIR QUALITY MITIGATION FEE ALLOCATION REQUEST FOR SIERRA COLLEGE BLVD WIDENING SEGMENT 1

ACTION REQUESTED

Adopt Resolution #26-03 to allocate \$8,000,000 of Regional Transportation and Air Quality Mitigation Fees to the County of Placer for the design and construction of a traffic signal at the intersection of Sierra College Blvd & Twelve Bridges Drive.

BACKGROUND

The Regional Transportation and Air Quality Mitigation Fee Program ("Fee Program") includes \$36.3 million for the widening of the Sierra College Blvd corridor, as adopted by the Board in January 2024. While \$8.1 million has been allocated to other Sierra College Blvd widening segments, none has been allocated to Segment 1 to date. Segment 1 covers the area between SR 193 and the northern Rocklin city limit.

DISCUSSION

Placer County and the City of Lincoln have received numerous requests over the years to provide improvements at the intersection of Sierra College Blvd and Twelve Bridges Drive, located within Segment 1 of the Sierra College Blvd Widening Project. Placer County, working with the developers of nearby Bickford Ranch, developed a preliminary design and cost estimate of this project. As identified in the 2024 Nexus Study, signalization and roadway widening costs from the center of the intersection and south of that point are eligible to be reimbursed by SPRTA. Widening to the north of the intersection will be paid for jointly by the County and the City of Lincoln. Preliminary cost estimates show that the SPRTA portion of the work amounts to \$6,856,057. Placer County is requesting an allocation of \$8,000,000 to cover any unforeseen costs.

FINANCIAL ANALYSIS

Staff analyzed the funding allocation request with currently programmed work allocations and determined there is sufficient anticipated revenue to allocate the requested funds.

The SPRTA Technical Advisory Committee (TAC) concurs with the proposed allocation.

CP:mbc:ss

May 6, 2026

Matt Click, AICP
Executive Director
South Placer Regional Transportation Authority
2260 Douglas Boulevard, Suite 130,
Roseville, CA 95661

Re: Sierra College/Twelve Bridges Funding Request

Mr. Click:

Placer County and the City of Lincoln have received numerous requests to provide intersection improvements, including the installation of a signal, at the intersection of Sierra College Boulevard and Twelve Bridges Drive. Placer County in coordination with the Bickford Ranch team, prepared a preliminary design and cost estimates for the project. A portion of the project is eligible for reimbursement from the SPRTA fee program, as identified in the nexus study. The eligible SPRTA costs are roadway widening from the center of the intersection on Sierra College Boulevard to the south and the signal equipment. The additional work to widen the roadway to the north will be jointly funded by the City of Lincoln and Placer County. Preliminary cost estimates have been prepared for each portion of work, north and south, and the SPRTA eligible costs are identified as south of Twelve Bridges Drive on the attached estimates. The preliminary costs estimate for the SPRTA-eligible improvements is \$6,856,057 and the County is requesting an allocation of \$8,000,000 so that we would not need to return to the SPRTA Board if there are additional unforeseen costs. We look forward to discussing this matter at the May TAC with our SPRTA partners.

If you have any questions, please feel free to give me a call at (530) 745-7533.

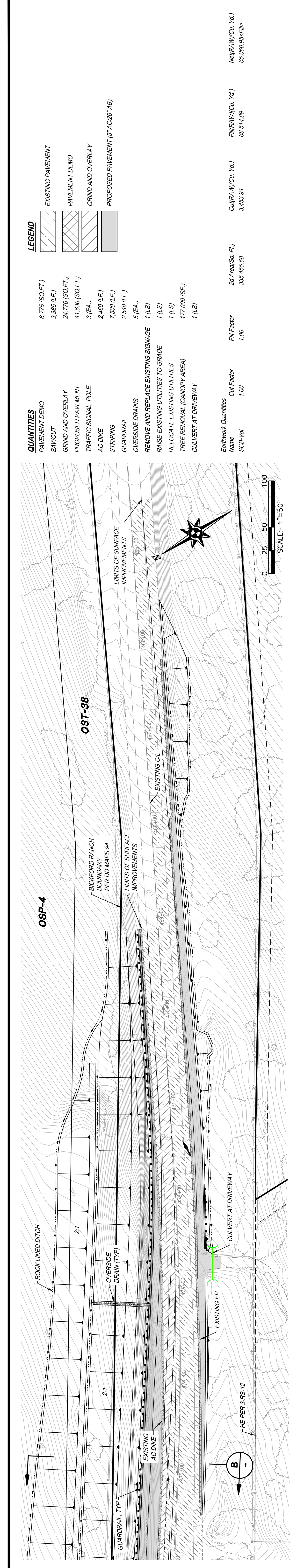
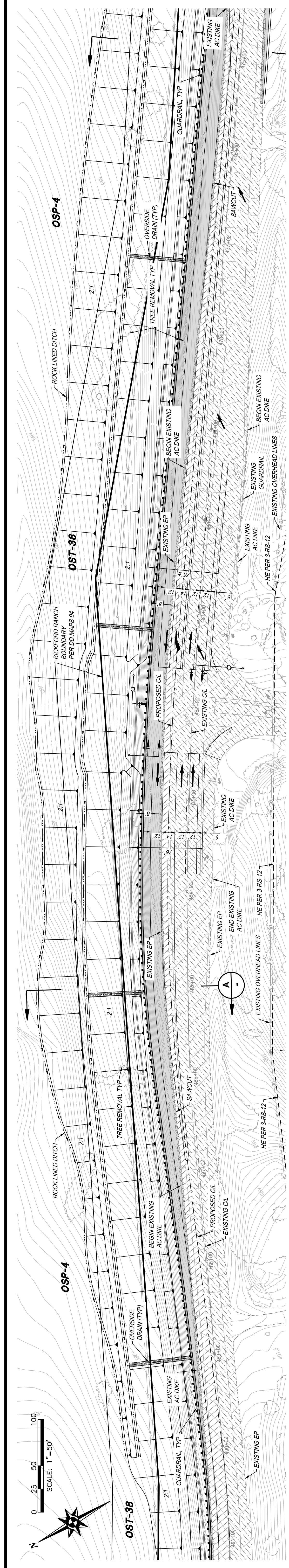
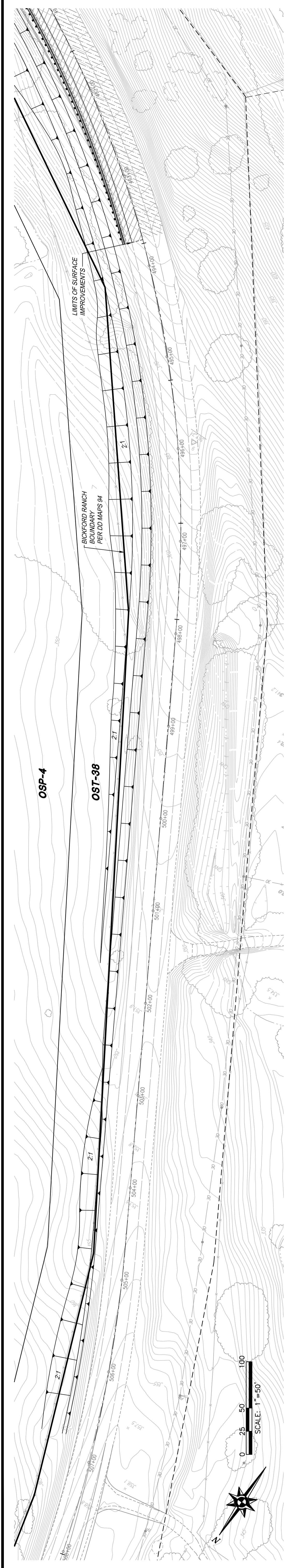
Sincerely,

A handwritten signature in blue ink, appearing to read "Richard Moorehead".

Richard Moorehead, PE, TE
Deputy Director
Department of Public Works

Attachments:

Preliminary Costs for Bickford Offsite
Sierra College Blvd and Twelve Bridges Drive Plan Lines



QUANTITIES

PAVEMENT DEMO	6,775 (SQ. FT.)	Fill Factor	1.00	Fill Area(Sq. Ft.)	6,775.00	Fill(RAW)(Cu. Yd.)	261.728
SAWCUT	3,385 (L.F.)	Cut Factor	1.00	Cut Area(Sq. Ft.)	3,385.00	Cut(RAW)(Cu. Yd.)	131.385
GRAND AND OVERLAY	24,770 (SQ. FT.)	SCB-Vol	1.00	SCB-Vol	24,770.00	SCB-Vol	950.846
PROPOSED PAVEMENT	41,630 (SQ. FT.)						
TRAFFIC SIGNAL POLE	3 (EA)						
AC DIKE	2,460 (L.F.)						
STRIPING	7,500 (L.F.)						
GUARDRAIL	2,540 (L.F.)						
OVERSIDE DRAINS	5 (EA)						
REMOVE AND REPLACE EXISTING SIGNAGE	1 (LS)						
RAISE EXISTING UTILITIES TO GRADE	1 (LS)						
RELOCATE EXISTING UTILITIES	1 (LS)						
TREE REMOVAL (CANOPY AREA)	177,000 (SF.)						
CULVERT AT DRIVEWAY	1 (LS)						

LEGEND

[Pattern]	EXISTING PAVEMENT
[Pattern]	PAVEMENT DEMO
[Pattern]	GRAND AND OVERLAY
[Pattern]	PROPOSED PAVEMENT (6" AC20" AB)

Sierra College Boulevard & Twelve Bridges Drive - Plan Lines

Bickford Ranch

Placer County
Scale: 1"=50'

MACKAY & SOMPS
ENGINEERS PLANNERS SURVEYORS
1500 Broadway Drive, Suite 300, Berkeley, CA 94704-1500
(415) 863-1500

California
Date: 9/17/2025
Job No: 18451.BIC

Earthwork Quantities
Name: Sierra College Blvd
Cut Factor: 1.00
Fill Factor: 1.00
Fill Area(Sq. Ft.): 6,775.00
Cul(RAW)(Cu. Yd.): 131.385
Fill(RAW)(Cu. Yd.): 261.728
SCB-Vol: 950.846
SCB-Vol: 24,770.00
SCB-Vol: 950.846

A SIERRA COLLEGE BLVD
NTS
(7/10/2025 EXC/25748)

B SIERRA COLLEGE BLVD
NTS
(7/10/2025 EXC/25748)



RESOLUTION #26-03 OF THE BOARD OF DIRECTORS
IN THE MATTER OF: ALLOCATING REGIONAL TRANSPORTATION
AND AIR QUALITY MITIGATION FEE PROGRAM FEES TO SIERRA
COLLEGE BLVD WIDENING SEGMENT 1

The following resolution was duly passed by the South Placer Regional Transportation Authority Board of Directors at a regular meeting held May 27, 2026 by the following vote on roll call:

AYES:

NOES:

ABSTAIN:

ABSENT:

WHEREAS, the South Placer Regional Transportation Authority ("Authority") was formed to provide for the coordinated planning, design, financing, acquisition, determination of the timing of construction, and construction, of certain transportation improvements located in the area of jurisdiction of the Authority; and

WHEREAS, the Authority most recently adopted the Regional Transportation and Air Quality Mitigation Fee to finance specified transportation facilities, as specified in Authority Resolution #24-01 dated January 24, 2024; and

WHEREAS, the Capital Improvement Program has specified a total contribution to the Sierra College Blvd Widening Project as \$36,324,825, with \$21,220,393 earmarked for Segments 1 & 2; and

WHEREAS, no allocations have been made for Segment 1, but \$8,108,538 has been allocated to other phases of the Sierra College Blvd Widening Project; and

WHEREAS, the County of Placer desires to construct a signal at the intersection of Sierra College Blvd and Twelve Bridges Drive in response to numerous requests from residents; and

WHEREAS, the signalization and widening south of the intersection is eligible to be reimbursed by SPRTA; and

WHEREAS, the County of Placer and City of Lincoln have jointly agreed to fund the costs related to widening of Sierra College Blvd north of the intersection; and

WHEREAS, the County of Placer has requested \$8,000,000 for reimbursement of costs related to delivering this project.

NOW, THEREFORE, BE IT RESOLVED THAT the Authority allocates \$8,000,000 to the County of Placer for the Sierra College Blvd Widening Phase 1 Project – Sierra College Blvd/Twelve Bridges Drive Signalization.

Signed and approved by me after its passage

Ben Brown, Chair

Matt Click, AICP
Executive Director

Solvi Sabol
Clerk of the Board



City of Lincoln • City of Rocklin • City of Roseville • Placer County

TO: SPRTA Board of Directors

DATE: May 27, 2026

FROM: Cory Peterson, Senior Transportation Planner

SUBJECT: FY 2025/26 ADMINISTRATIVE BUDGET – AMENDMENT #1

Action Requested

Approve Amendment #1 of the FY 2025/26 Administrative Budget (Attachment 1) for the administration of the South Placer Regional Transportation Authority (SPRTA).

Background

The Board adopts an annual administrative budget to cover administrative contracts, including traffic modeling, legal services, and PCTPA's expenses to administer the Authority on an actual cost basis. Occasionally the budget will need to be amended to reflect actual costs.

Discussion

As shown in Attachment 1, the FY 2025/26 Amendment #1 administrative budget is proposed at \$115,920, a \$16,077 increase from the FY 2025/26 adopted budget. This budget includes \$115,920 in "PCTPA Administrative Contract" costs for staff efforts for general administration of SPRTA, an increase of \$11,077 from the current budget due to increased staff costs. The budget for "On-Call Model and Fee Assistance Consultant" has increased \$5,000 to \$25,000 to match the FY 2025/26 OWP which lists \$5,000 in costs for an as-needed on-call engineer consultant. The remaining budget items are unchanged. The "PCTPA Administrative Contract" and "On-Call Model and Fee Assistance Consultant" budgets match those in PCTPA's Overall Work Program (OWP). The budget is balanced.

The Board should note that SPRTA budgets cover expected expenses, but all billings are at actual cost with no year-to-year carryover.

The SPRTA Technical Advisory Committee (TAC) has reviewed this proposed budget and recommends the Board approve the budget as presented.

CP:ss

Attachment 1

SPRTA Administrative Budget Summary Amendment 1 FY 2025/26

May 27, 2026

Expenditures	FY 2025/26	FY 2025/26	
	Amend #1 Budget	Adopted June 2025 Budget	Difference
PCTPA Administrative Contract	\$115,920	\$104,843	\$11,077
Legal Services	\$5,000	\$5,000	\$0
On-Call Model and Fee Assistance Consultant	\$25,000	\$20,000	\$5,000
Financial Audits	\$7,450	\$7,450	\$0
Direct Expenses (note 1)	\$2,000	\$2,000	\$0
Accounting Services	\$500	\$500	\$0
Contingency funds	\$0	\$0	\$0
Total	\$155,870	\$139,793	\$16,077

Revenues	FY 2024/25	FY 2024/25	
	Amend #1 Budget	Adopted June 2025 Budget	Difference
SPRTA Fees	\$155,870	\$139,793	\$16,077
SPRTA Fees/Carryover	\$0	\$0	\$0
Total	\$155,870	\$139,793	\$16,077

Contingency Funds	Budget	Budget	Actual
	\$0	\$0	\$0

Revenue to Expenditure Comparison	Budget	Budget	Actual
Surplus/(Deficit)	\$0	\$0	\$0

Note 1: Direct expenses include postage, printing, advertising, and meeting expenses.



City of Lincoln • City of Rocklin • City of Roseville • Placer County

TO: SPRTA Board of Directors

DATE: May 27, 2026

FROM: Cory Peterson, Senior Transportation Planner

SUBJECT: FY 2026/27 ADMINISTRATIVE BUDGET

Action Requested

Approve the FY 2026/27 Administrative Budget (Attachment 1) for the administration of the South Placer Regional Transportation Authority (SPRTA).

Background

The Board adopts an annual administrative budget to cover administrative contracts, including traffic modeling, legal services, and PCTPA's expenses to administer the Authority on an actual cost basis.

Discussion

As shown in Attachment 1, the FY 2026/27 administrative budget is proposed at \$206,617, a \$50,747 increase from the FY 2025/26 Amendment #1 budget. This budget includes \$166,667 in "PCTPA Administrative Contract" costs for staff efforts for general administration of SPRTA, an increase of \$50,747 from the current budget due to increased staff costs. The remaining budget items are unchanged from last year. The "PCTPA Administrative Contract" and "On-Call Consultants" budgets match those in PCTPA's Overall Work Program (OWP). The budget is balanced.

The Board should note that SPRTA budgets cover expected expenses, but all billings are at actual cost with no year-to-year carryover.

The SPRTA Technical Advisory Committee (TAC) has reviewed this proposed budget and recommends the Board approve the budget as presented.

CP:ss

Attachment 1

SPRTA Administrative Budget Summary

FY 2026/27

June 25, 2025

Expenditures	FY 2026/27	FY 2025/26	
	Proposed Budget	Amend #2 Budget	Difference
PCTPA Administrative Contract	\$166,667	\$115,920	\$50,747
Legal Services	\$5,000	\$5,000	\$0
On-Call Consultants: Model & Fee Assistance, and Engineering	\$25,000	\$25,000	\$0
Financial Audits	\$7,450	\$7,450	\$0
Direct Expenses (note 1)	\$2,000	\$2,000	\$0
Accounting Services	\$500	\$500	\$0
Contingency funds	\$0	\$0	\$0
Total	\$206,617	\$155,870	\$50,747

Revenues	FY 2025/26	FY 2024/25	
	Proposed Budget	Amend #2 Budget	Difference
SPRTA Fees	\$206,617	\$155,870	\$50,747
SPRTA Fees/Carryover	\$0	\$0	\$0
Total	\$206,617	\$155,870	\$50,747

Contingency Funds	Budget	Budget	Actual
	\$0	\$0	\$0

Revenue to Expenditure Comparison	Budget	Budget	Actual
Surplus/(Deficit)	\$0	\$0	\$0

Note 1: Direct expenses include postage, printing, advertising, and meeting expenses.

SOUTH PLACER REGIONAL TRANSPORTATION AUTHORITY
Technical Advisory Committee Meeting Summary
April 14, 2026

Technical Advisory Committee

Vin Cay, City of Lincoln
Araceli Cazarez, City of Lincoln
Amber Conby, Placer County
Rich Moorehead, Placer County
Debbie Draper, City of Rocklin
Chris Ladeas, City of Rocklin
Kristen Van Groningen, City of Rocklin
Jake Hanson, City of Roseville
Mark Johnson, City of Roseville
Stefanie Kemen, City of Roseville

Staff

Matt Click
Mike Costa
David Melko
Cory Peterson
Solvi Sabol
Mike Costa

I-80 / SR 65 Interchange Value Engineering

David Melko, Principal Transportation Planner

David presented a preliminary summary of the value engineering workshop held March 2–3, framing it as a work in progress ahead of a mid-May presentation to Caltrans management and the PCTPA Board. He was not looking for approval — just feedback on whether the summary accurately captured what happened at the workshop.

The workshop had three core objectives: develop cost-effective, implementable strategies to improve safety and operations at the interchange; repackage elements of the preferred alternative into smaller, independent projects (ideally under \$50 million); and identify capital and operational components of each.

Six near-term projects (implementable within 10 years, each under \$50 million) were identified:

- **NB SR 65 / EB I-80 auxiliary lane** – \$30–45M (TSIP/INFRA)
- **SB SR 65 to WB I-80 interim connector improvement** – \$5–7M (BUILD)
- **Sunset to Blue Oaks auxiliary lanes (NB and SB)** – \$5–8M (Solutions/BUILD)
- **EB I-80 barrier-separated weaving improvement** – ~\$20M (Solutions)
- **Complete Streets/connectivity improvements at Taylor Road** – ~\$15M (ATP/Solutions)
- **NB SR 65 general purpose and auxiliary lane** – ~\$30M (limited state funding; possible federal; auxiliary portion eligible under Solutions)

A 10+ year table is still being developed. Those projects will likely run \$100–150M each.

There was discussion about the name. Specifically, Stephanie Kemen (Roseville) raised a good point: "value engineering" carries connotations — people hear it and assume you are just trimming costs, swapping materials, shaving a little off an existing design. That is not what this was. This was more of an analysis of what can realistically be done with limited resources, given that the \$800M full build-out is not happening anytime soon given the sales tax measure has failed twice. There was talk of renaming it — "Alternatives Analysis," "Reimagining the I-80/65 Interchange," or a "20-Year Plan" framing were all floated. David agreed to work on the title and make sure the emphasis is clearly on safety and operations improvement, not just cost-cutting. 16

Item 2: Tier 2 Fee Deferrals and Changing DUE Calculations

Cory Peterson, Senior Transportation Planner

Rich Moorehead, Placer County, brought up an issue they are starting to run into with fee deferrals: when a project gets a deferral approval, it is based on a specific DUE count at the time. But as ITE trip generation rates get updated — even if the project itself has not changed at all — the math changes, and the approved deferral may no longer cover the full project.

The specific case in Placer County involves age-restricted land uses, where the DUE rate has gone up under newer ITE editions. So, a project approved at, say, 340 DUEs might now calculate out to 360 or 380, creating a gap that is not covered by the existing deferral letter.

Roseville noted they do not have active cases right now but acknowledged it is likely coming. It was also noted that a related question is coming — as agencies update their county/city and SR 65 JPA fee schedules, do they standardize on ITE 11th edition (to match current SPRTA rates) or jump to 12th? No decisions were made; the group agreed to bring both the deferral gap issue and the ITE edition question back for fuller discussion at the May TAC meeting.

Other Items/Upcoming Dates

Next SPRTA TAC meeting: May 12.

ss:

SOUTH PLACER REGIONAL TRANSPORTATION AUTHORITY
Technical Advisory Committee Meeting Summary
May 12, 2026

Technical Advisory Committee

Vin Cay, City of Lincoln
Matt Medill, City of Lincoln
Araceli Cazarez, City of Lincoln
Rich Moorehead, Placer County
Kristen Van Groningen, City of Rocklin
Jake Hanson, City of Roseville
Mark Johnson, City of Roseville
Stefanie Kemen, City of Roseville
Kristen Van Groningen, City of Rocklin

Staff

Matt Click
Mike Costa
David Melko
Cory Peterson
Solvi Sabol

Sierra College Blvd / Twelve Bridges Drive Signalization – Allocation Request

Cory Peterson, Senior Transportation Planner

Cory Peterson presented an allocation request from Placer County for SPRTA-eligible improvements associated with the signalization of the Sierra College Boulevard and Twelve Bridges Drive intersection, identified as part of the Sierra College Boulevard Widening, Segment 1 project.

Background: Placer County and the City of Lincoln have been working with the developer of Bickford Ranch to signalize this intersection, which is a development agreement trigger at 650 units of construction. The intersection has generated a high volume of requests for improvement from the public. Placer County, the City of Lincoln, and SPRTA collaborated to advance the project ahead of the development trigger.

A cost estimate was prepared and divided between improvements south and north of the intersection:

- SPRTA-eligible costs (south of intersection plus the signal itself): approximately \$6.8 million. The largest cost driver is approximately \$3.6 million in fill material required to address a significant grade change on the east side of the intersection.
- City of Lincoln and Placer County costs (widening north of intersection): just over \$5 million.

To reduce costs, the project was modified to construct one northbound through lane initially, with a second northbound through lane deferred to a future segment when additional widening north of the intersection is undertaken. This avoids the cost of extending the fill transition at 55 mph design speed at this time.

Placer County is requesting a SPRTA allocation of \$8 million, which is slightly above the current cost estimate, to provide contingency for unforeseen costs without requiring a return to the Board. Rich Moorehead noted that Bickford Ranch has material cut available from the development site that may offset fill costs, suggesting the estimate may be high. Cory confirmed the project was run through the SPRTA cash flow model and sufficient revenue is available to cover the requested allocation.

Matt Medill (City of Lincoln) expressed support and noted that public interest in the improvement was also evident at a recent transportation event at Sun City, attended by both PCTPA and nearby residents.

TAC Action: The TAC concurred.

SPRTA Administrative Budget, FY 2025/26 – Amendment #1 (Cory)

Cory Peterson, Senior Transportation Planner

Cory presented the SPRTA administrative budget, Fiscal year 2025/26. This amendment accompanies the second OWP amendment completed earlier in the year and makes two adjustments:

- A slight increase of approximately \$11,000 to the administrative contract with PCTPA.
- Addition of \$5,000 for an on-call engineering consultant.

Total net increase from the June adopted budget: approximately \$16,000. No other changes were made. The amended budget will serve as the baseline for comparison with the proposed FY 2026/27 budget.

TAC Action: The TAC concurred.

SPRTA Administrative Budget – FY 2026/27

Cory Peterson, Senior Transportation Planner

Cory presented the proposed SPRTA Administrative Budget for FY 2026/27, compared against the FY 2025/26 amended budget. Changes from the prior year include:

- On-call consultant line items were restructured to separately identify modeling and fee assistance (\$20,000, currently contracted to GHD) and engineering on-call services (\$5,000). Total on-call amounts are consistent with prior years.
- The administrative contract with PCTPA increases by approximately \$50,000, to approximately \$166,000.

TAC Action: The TAC concurred.

Highway 49 TCE Extensions

Cory Peterson, Senior Transportation Planner

Cory provided an update on the SR 49 Sidewalk Infill Project in unincorporated North Auburn and the City of Auburn. This is an ATP-funded project currently under construction for approximately 18 months. Construction is scheduled to wrap up by the end of August.

Three Temporary Construction Easements (TCEs) need to be extended by approximately three months to cover the remainder of the construction period. The estimated cost to extend the TCEs is \$7,235.

Cory noted that SPRTA's involvement is required because SPRTA holds the power of eminent domain, which PCTPA does not. Right-of-way activities for the project have been conducted under SPRTA's authority, while PCTPA remains the implementing agency and is funding the project.

Staff will request \$10,000 from the Board to provide a small contingency in the event that any of the property owners seek additional compensation during negotiations.

TAC Action: The TAC concurred.

Dwelling Unit Equivalent (DUEs) and Deferrals - ITE Edition Change

Cory Peterson, Senior Transportation Planner and Rich Moorehead, Placer County

Cory and Rich led a continued discussion on two related issues tabled from the April TAC meeting: (1) how to handle deferral agreements when updated ITE trip generation rates cause DUE counts to increase, even when the underlying project has not changed; and (2) which ITE edition agencies should use as they update their fee schedules.

Background: At the April meeting, Rich raised the deferral gap issue. When a project receives a fee deferral, the approved DUE count is based on ITE rates in effect at the time. As ITE editions are updated, the same land use can generate a higher DUE count, creating a gap not covered by the existing deferral letter. Placer County's current case involves age-restricted housing, where updated ITE rates push Phase 1A from approximately 340 DUEs to a higher number. Roseville noted they do not have an active case at this time but expect to encounter the issue as their projects progress.

Key points from the discussion:

- The fee due when a deferral comes due is always the current fee rate at that time. Annual CCI increases already work this way, and ITE rate changes would apply on the same basis.
- Any increase in DUEs must be matched by sufficient remaining deferral capacity (second assurances). If the DUE count grows, agencies need to confirm that capacity under the existing deferral agreement can absorb the higher number; if not, the backing mechanism would need to be revisited.
- The group discussed whether a SPRTA Board-approved letter or policy statement could clarify that the approved land use, not the DUE count at the time of deferral approval, is the controlling factor, with annual reports serving as the binding record of DUEs for each year.
- Mark Johnson (City of Roseville) suggested that any such document be written to remain flexible going forward, so the group does not need to revisit this issue each time ITE rates are updated.

The TAC agreed that Placer County will draft bullet points outlining a proposed approach, circulate them to the group, and return the item for further discussion at the next TAC meeting. The goal is to bring a recommended solution to the SPRTA Board for approval.

City County Traffic Fee and and Highway 65 JPA Update

Cory Peterson, Senior Transportation Planner and Mark Johnson, City of Roseville

Mark provided an update on fee schedule updates for the City-County Traffic Fee and Highway 65 JPA programs. This discussion also connected to the ITE edition question raised in the prior item.

CCI Adjustment: The July 1 CCI (Construction Cost Index) inflationary adjustment calculates to 1.31%, based on May data just received. Mark noted that the annual CCI adjustments to the Highway 65 JPA fee do not require a public hearing, as the mechanism is established in development agreements and/or municipal codes.

ITE Edition: A related question from last month is which ITE Trip Generation edition agencies should use going forward. SPRTA currently uses the 11th edition; the 12th is the current version. The group consensus was to move to the 12th edition. Key considerations: the ITE online platform now defaults to the 12th, archived 11th edition data is increasingly difficult to access, and the gap between the 11th and 12th editions is not expected to be as significant as the shift between the 9th and 10th. SPRTA will need to align to the 12th edition as well to maintain consistency across the three fee programs.

Nexus Study Update Status: Nexus study updates for all three fee programs (City-County Traffic Fee, Highway 65 JPA, and the SPRTA fee) are being prepared jointly by consultant Fehr & Peers under a sole-source arrangement, with cost savings achieved through shared tasks. The current target is to implement updated fees on January 1, with CCI adjustments proceeding on July 1 in the interim. Required notice and outreach to BIA and board/council members will need to be completed well in advance of adoption.

The Highway 65 JPA Board meeting is scheduled for May 28 at 4:00 p.m. at the Roseville City Council Chambers. Mark noted that the updated fee tables for the City-County and Highway 65 JPA programs ahead of that meeting.

TAC Action: Informational discussion; no action requested.

Other Items/Upcoming Dates

SPRTA Board Meeting: May 27

Next TAC meeting: June 9

The meeting concluded at 2:30 PM

ss: