



# FY 2023/24 Overall Work Plan and Budget

Amendment #2

October 18, 2023





<b>WORK ELEMENT</b>	<b>TITLE</b>	<b>PAGE NO.</b>
<b>05</b>	<b>Agency Administration: Indirect Labor</b>	<b>1</b>
<b>10</b>	<b>Agency Administration: Overall Work Program</b>	<b>3</b>
<b>11</b>	<b>Transportation Development Act Admin</b>	<b>4</b>
<b>12</b>	<b>Intergovernmental Coordination</b>	<b>6</b>
<b>13</b>	<b>Intergovernmental Advocacy</b>	<b>8</b>
<b>14</b>	<b>Communications and Outreach</b>	<b>10</b>
<b>15</b>	<b>Building Administration</b>	<b>13</b>
<b>20</b>	<b>SACOG/MPO Planning Integration &amp; RTP</b>	<b>14</b>
<b>23</b>	<b>Consolidated Transportation Services Agency (CTSA) Administration</b>	<b>20</b>
<b>24</b>	<b>Transit Planning</b>	<b>22</b>
<b>27</b>	<b>Airport Land Use Commission/Aviation Planning</b>	<b>24</b>
<b>33</b>	<b>Bikeway Planning</b>	<b>26</b>
<b>35</b>	<b>Rail Program</b>	<b>28</b>
<b>40</b>	<b>Placer Parkway</b>	<b>30</b>
<b>41</b>	<b>I-80/SR 65 Interchange Improvements</b>	<b>32</b>
<b>42</b>	<b>Highway 65 Widening</b>	<b>34</b>
<b>43</b>	<b>I-80 Auxiliary Lanes</b>	<b>36</b>
<b>44</b>	<b>SR 49 Sidewalk Gap Closure</b>	<b>38</b>
<b>47</b>	<b>South Placer-South Sutter Transportation Fair Share Funding Analysis</b>	<b>40</b>
<b><u><a href="#">48</a></u></b>	<b><u><a href="#">Placer Countywide Active Transportation Plan</a></u></b>	<b>42</b>
<b>50</b>	<b>Project Programming and Reporting</b>	<b>45</b>
<b>61</b>	<b>Regional Transportation Funding Program</b>	<b>50</b>
<b>80</b>	<b>Freeway Service Patrol (FSP)</b>	<b>52</b>
<b>100</b>	<b>South Placer Regional Transportation Authority (SPRTA) Administration</b>	<b>54</b>

*This page intentionally left blank.*

# OVERALL WORK PROGRAM FOR 2023/24

## OVERVIEW

The FY 2023/24 Overall Work Program (OWP) documents the management, budgetary, and monitoring activities performed annually by Placer County Transportation Planning Agency (PCTPA). It is developed annually for Caltrans review and for approval by the PCTPA Board of Directors. This version of the OWP is the result of input from jurisdiction management, public works and planning officials, air district management, tribal governments, elected officials, and the general public. This document also provides an application format for Caltrans-administered funding programs, such as FHWA grants.

Twenty-four work elements are proposed that include specific objectives, budgets, and products. Several of these work elements are funded by a mixture of state, federal and local programs. The remaining are funded solely by TDA funds. This work program has a number of important characteristics:

1. The work program is action oriented. Its primary objective is to implement a programming and funding strategy that will address the mobility needs of Placer County residents, businesses, and visitors. Of key overall importance is the implementation of the Regional Transportation Plan, which serves as a guiding force for transportation improvements over the next 20 years, and its integration with SACOG's Metropolitan Transportation Plan (MTP) and Sustainable Communities Strategy (SCS) and other activities that support regional planning as covered under Work Element 20. Also included here are strategies and studies to address major transportation issues or hot spots including: (1) Placer Parkway; (2) I-80/SR 65 Interchange Improvements; (3) Highway 65 Widening; (4) Bikeway Planning; (5) Airport Planning; (6) Rail Program; (7) Regional Transportation Funding Strategy; (8) I-80 Auxiliary Lanes; (9) SR 49 Sidewalk Gap Closure; (10) Mobility Action Plan; (11) Transit Planning; and (12) Riego Road/Baseline Road Widening.
2. The work program reflects a pro-active approach to identifying future transportation project needs (e.g., TDA Administration, Capitol Corridor Rail, implementation of the Regional Transportation Plan, Regional Transportation Funding Strategy, Mobility Action Plan, Bikeway Planning).
3. The work program provides a greater emphasis on implementation of previously identified needs, including administration of the South Placer Regional Transportation Authority, project management and delivery, and leading the preconstruction of the I-80 Auxiliary Lanes, SR 49 Sidewalk Gap Closure, and Highway 65 Widening.
4. The work program includes a comprehensive effort to assist member jurisdictions in maintaining the high level of compliance with "use it or lose it" timely use of funds requirements and significant increases in reporting and monitoring required in the use of SB 1 funding.

5. The work program reflects a multimodal approach. Effort has been divided between planning for transit, highways, rail, aviation, pedestrian facilities, and bikeways.
6. The work program reflects the strong commitment to partnerships with other regional agencies in approaching interregional transportation needs.
7. The work program reflects the more pronounced need to participate in regional, state, and federal discussions regarding planning and funding transportation projects.
8. The work program will assure that PCTPA meets all state and federal planning requirements.
9. The work program funding allocation system meets TDA requirements.

The 2023/24 OWP is a product of cooperative efforts by PCTPA's member jurisdictions, including the Cities of Auburn, Colfax, Lincoln, Rocklin, and Roseville, the Town of Loomis, and Placer County, as well as other interested agencies. Equally important, the OWP is consistent with state and federal funding priorities.

## **INTRODUCTION**

The mission of Placer County Transportation Planning Agency (PCTPA) is derived from its numerous state and local designations. The agency has been designated in state law as the Regional Transportation Planning Agency (RTPA) for Placer County. PCTPA is also the county's Congestion Management Agency (CMA), a statutorily designated member of the Capitol Corridor Joint Powers Authority (CCJPA), the designated Local Transportation Authority for transportation sales tax purposes, and the airport land use planning body and hearing board for Lincoln, Auburn, and Blue Canyon Airports. As part of their Joint Powers Agreement, PCTPA is the designated administrator for the South Placer Regional Transportation Authority and the Western Placer Consolidated Transportation Services Agency. Under an agreement with the Sacramento Area Council of Governments (SACOG), PCTPA also represents Placer jurisdictions in federal planning and programming issues. Since PCTPA has a Local Agency-State Agreement for federal aid projects, it is also eligible to administer federal projects.

**Regional Transportation Planning Agency:** PCTPA was created by Title 7.91 of the government code commencing with Section 67910 as the transportation planning agency for Placer County excluding Lake Tahoe. PCTPA has also been designated as the Regional Transportation Planning Agency (RTPA) for Placer County excluding Lake Tahoe in Section 29532.1(c) of the Government Code. Previous to this designation, PCTPA operated under the name of the Placer County Transportation Commission (PCTC) and operated as a local county transportation commission as specified under Section 29532(c) of the Government Code.

PCTPA has executed a memorandum of understanding and Master Fund Transfer Agreement with the State Department of Transportation on January 26, 1996, and updated in 2012 and 2014 identifying the responsibilities of PCTPA as the RTPA and providing the administrative structure to implement these responsibilities.

As an RTPA with an urbanized population of over 50,000, PCTPA is responsible for preparing a Regional Transportation Plan (RTP) and Regional Transportation Improvement Program (RTIP) pursuant to Section 65080 of the Government Code.

**Local Transportation Fund Administration:** As the transportation planning agency, PCTPA allocates the Local Transportation Fund (LTF) to Placer County public transportation agencies pursuant to Section 29532 of the Government Code. The administration of these funds includes the establishment of a Social Services Transportation Advisory Council, the implementation of a citizen participation process appropriate for Placer County, annual recommendations for productivity improvements for transit operators, the performance of an annual fiscal audit of all LTF claimants, the implementation of a triennial performance audit of all LTF claimants, and the preparation of an annual unmet transit needs determination.

PCTPA receives an allocation of LTF funds for the administration of the LTF fund pursuant to Section 99233.1 of the Public Utilities Code and for transportation planning pursuant to Section 99233.2 of the Public Utilities Code and Section 6646 of the Government Code.

It is the responsibility of PCTPA to establish rules and regulations to provide for administration and allocation of the LTF and State Transit Assistance (STA) Funds in accordance with applicable sections of the Government Code, Public Utilities Code and Administrative Code included within the Transportation Development Act. It is also the responsibility of PCTPA to adhere to the applicable rules and regulations promulgated by the former Secretary of the Business, Transportation and Housing Agency (now the California State Transportation Agency) of the State of California as addressed in the Transportation Development Act, Title 3, Division 3, Chapter 2, Article II, Section 29535.

Under SB 45, signed by Governor Wilson in October 1997, Regional Transportation Planning Agencies (RTPAs) such as PCTPA are responsible for selection of projects, known as the Regional Transportation Improvement Program (RTIP), to be funded with the county's share of STIP funds. This power also comes with the responsibility of ensuring that the projects are on schedule and within budgetary constraints.

**Federal Transportation Planning and Programming:** PCTPA has executed memoranda of understanding (MOUs) with Caltrans and the Sacramento Council of Governments (SACOG) on April 11, 2001, with updates in 2005 and 2016, to govern federal transportation planning and programming in Placer County. This agreement integrates the PCTPA Regional Transportation Plan (RTP) and RTIP within the SACOG process.

PCTPA submits the state mandated RTP, developed pursuant to Section 65080.5 of the Government Code, to SACOG for inclusion in the federal Metropolitan Transportation Plan. As part of this agreement, SACOG conducts a federal air quality conformity test on the Placer County transportation program and plan.

PCTPA receives an allocation of federal STBGP funds for Placer County. Pursuant to Section 182.6 of the Streets and Highways Code, PCTPA can exchange the non-urbanized funds for State gas tax funds.

PCTPA allocates these exchange funds to jurisdiction projects based upon an MOU signed by all Placer jurisdictions dated November 2, 1994. The STBGP funding exchange formula and allocation was updated to reflect TEA 21, approved by the PCTPA Board on January 27, 1999, and is updated annually as appropriate to reflect the current Federal transportation bill.

**Administration of Federal Aid Projects:** PCTPA executed a Local Agency - State Agreement for Federal Aid Projects (Agreement 03-6158) with the State of California on March 2, 1994 and reauthorized on October 10, 2016. The execution of this agreement qualifies PCTPA to administer federally funded projects.

**Passenger Rail Administration:** Pursuant to Section 14076.2(b) of the Government Code, PCTPA is statutorily designated as a member of the Capitol Corridor Joint Powers Authority (CCJPA). Through an interagency agreement with Caltrans, the CCJPA administers the intercity rail service on the San Jose-Auburn railroad corridor.

**Airport Land Use Commission:** PCTPA was designated the Airport Land Use Commission (ALUC) for Placer County by the Board of Supervisors (December 17, 1996) and the Placer County City Selection Committee (October 24, 1996) pursuant to Section 21670.1(a)(b) of the Public Utilities Code. PCTPA acts as the hearing body for land use planning for Placer County airports. PCTPA is also responsible for the development of airport land use plans for Placer County airports as specified in Section 21674.7 of the Public Utilities Code.

Placer County, Auburn, and Lincoln each collect a fee on development projects by local ordinance in the area governed by the airport land use plan. This fee is passed on to PCTPA to help defray the cost of project review.

**South Placer Regional Transportation Authority (SPRTA) Administration:** PCTPA was designated as the administrator of the SPRTA under the terms of the Authority's Joint Powers Agreement dated January 22, 2002. As such, PCTPA provides staffing and management of the Authority, and is reimbursed for these services under a staffing agreement.

**Local Transportation Authority (PCLTA):** PCTPA was designated as the transportation sales tax authority for Placer County by the Placer County Board of Supervisors on August 22, 2006. In the event that a transportation sales tax is adopted by Placer's voters, PCTPA, acting as the PCLTA, would administer the sales tax expenditure plan.

**Western Placer Consolidated Transportation Services Agency (WPCTSA) Administration:** PCTPA was designated as the administrator of the WPCTSA under the terms of the Agency's Joint Powers Agreement dated October 13, 2008. As such, PCTPA provides staffing and management of the Agency, and is reimbursed for these services under a staffing agreement.



## PCTPA ORGANIZATION

The nine-member PCTPA Board consists of three members appointed by the Placer County Board of Supervisors and one member each from the incorporated cities of Auburn, Colfax, Lincoln, Loomis, Rocklin and Roseville.

PCTPA has provided for seven full-time staff members to implement the FY 2023/24 OWP. The organization of PCTPA is summarized in Figure 1.

The PCTPA reorganized its staffing structure and became a separate and independent agency on May 1, 1992. Previous to this reorganization, PCTPA was staffed by the Placer County Public Works Department.

## GEOGRAPHIC LOCATION

PCTPA's jurisdiction includes a portion of northern California between the Sacramento Metropolitan area and the Nevada State line, as shown in Figure 2. In total, Placer County contains 1,506 square miles ranging in elevation from 160 feet to nearly 9,500 feet.

PCTPA represents the County, five incorporated cities, and one incorporated town located within the political boundary of Placer County. Transportation planning services are provided to the following incorporated cities with their corresponding January 1, 2022 populations: Auburn (13,608), Colfax (2,042), Lincoln (51,252), Loomis (6,739), Rocklin (71,663) and Roseville (151,307). Unincorporated Placer County, excluding the Tahoe Basin portion of Placer County, has a population of 102,669. These population estimates are based upon information provided by the California Department of Finance (DOF) in their 2022 DOF E-1 Report as updated in May 2022.

## AGENCY COORDINATION

PCTPA coordinates regional transportation planning activities with other public agencies including Sacramento Area Council of Governments (SACOG), Tahoe Regional Planning Agency (TRPA), State Department of Transportation (Caltrans), California Transportation Commission (CTC), adjacent RTPAs (Nevada County Transportation Commission, El Dorado County Transportation Commission), United Auburn Indian Community (UAIC) of the Auburn Rancheria, and other interested groups.

**United Auburn Indian Community:** UAIC is a federally recognized tribe, as such PCTPA conducted government-to-government coordination and consultation include the following:

- In person meeting, including PCTPA, SACOG, and UAIC, occurred during the early development of both the MTP/SCS and RTP
- In person meetings and email correspondence, including PCTPA, Caltrans, and UAIC, occurred for cultural coordination as part of the I-80/SR 65 Interchange Phase 1 Improvements in Roseville and Rocklin
- In person meeting and email correspondence, including PCTPA, Caltrans, and UAIC, occurred for cultural coordination as part of the State Route 49 Sidewalk Gap Closure Project in Auburn

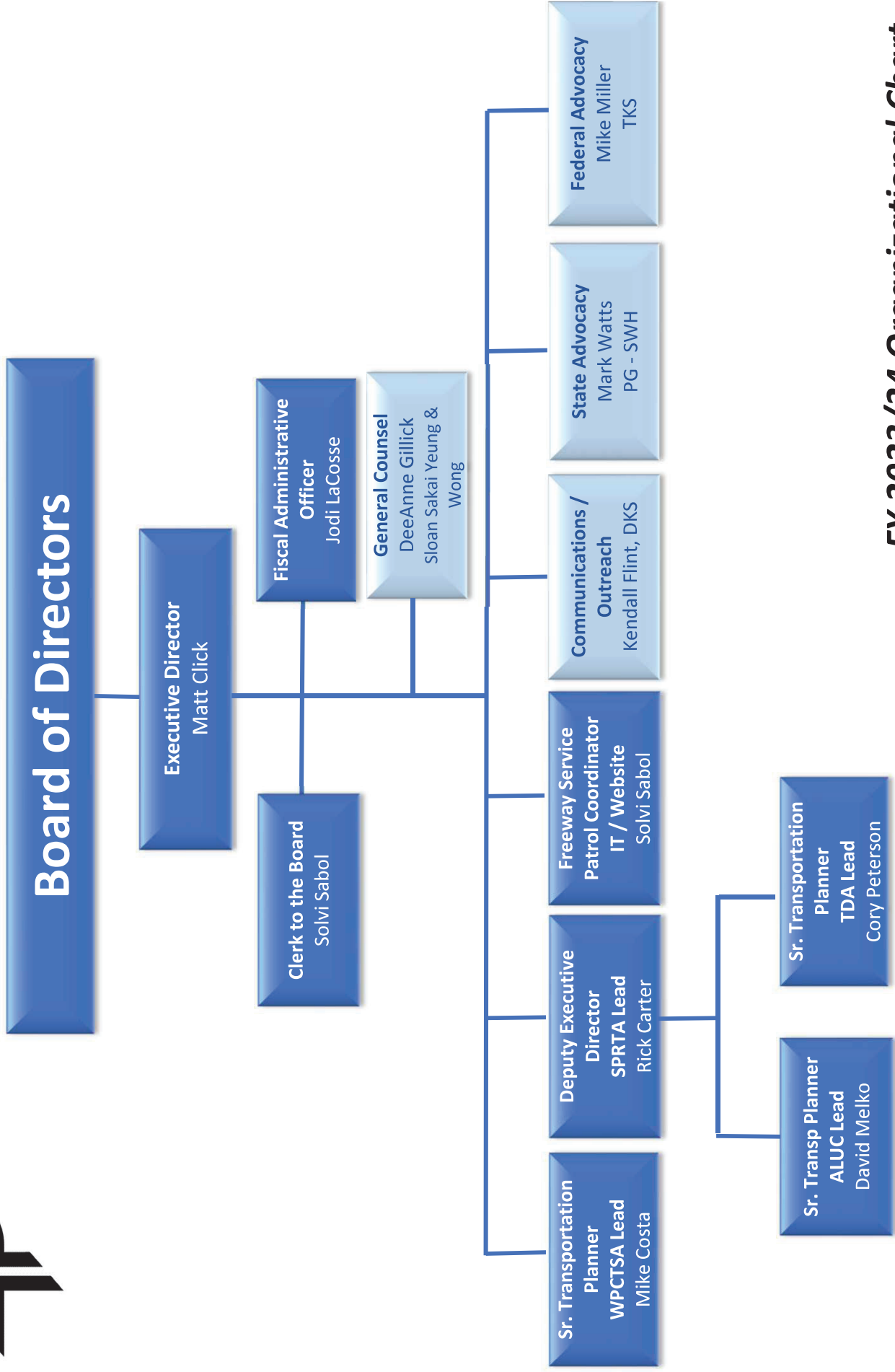
- In person meeting to develop partnership between PCTPA and UAIC for the regional transportation funding strategy

## **COMMUNITY PARTICIPATION**

In an ongoing effort to encourage participation of all communities in the transportation planning process, and in compliance with Title VI, the PCTPA solicits input through various policy, technical, and public forums. Outreach to the United Auburn Indian Community is specifically included.

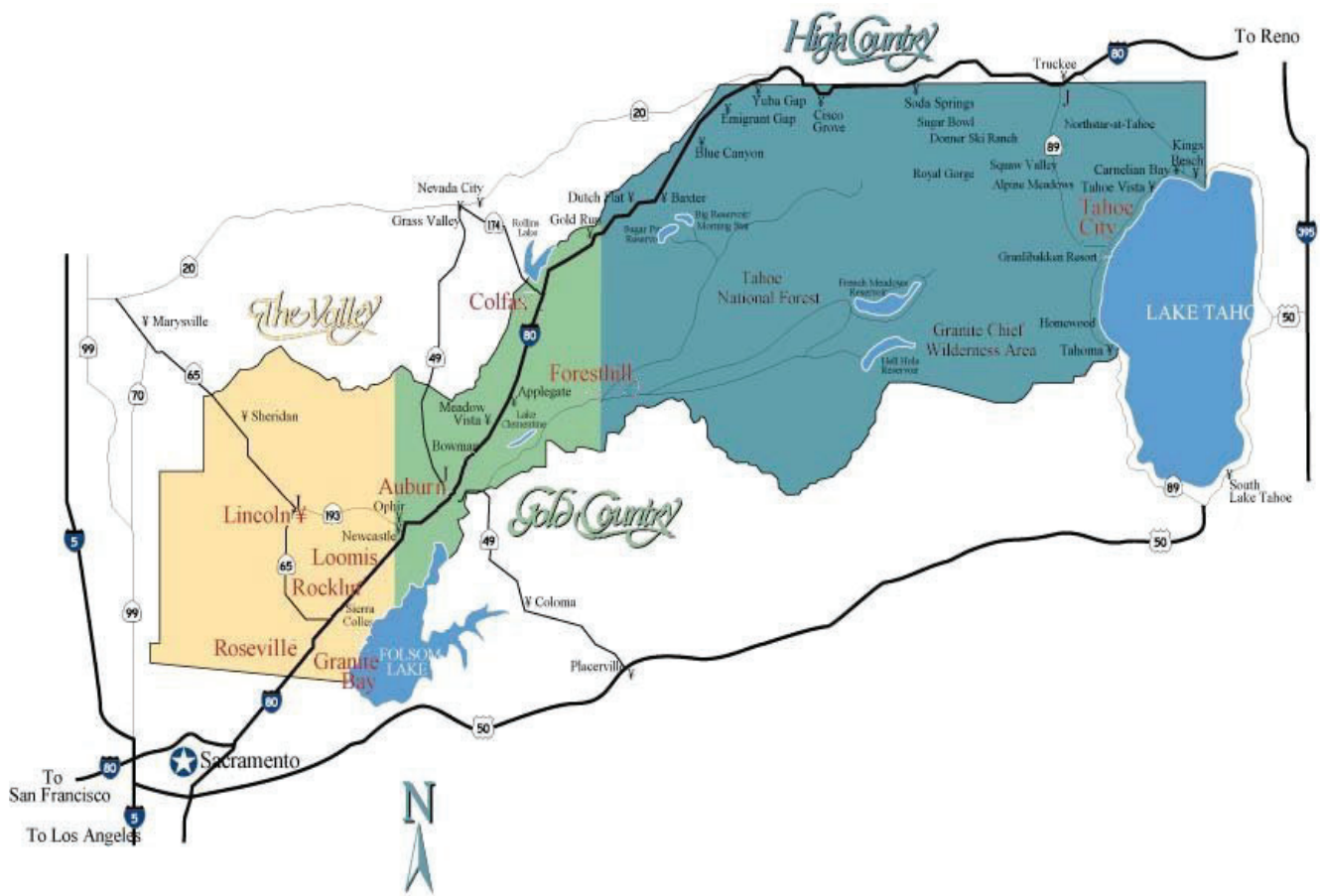
PCTPA conducts public hearings regarding the development and adoption of major planning documents such as the Regional Transportation Plan, the Regional Transportation Improvement Program, and the annual unmet needs hearing. Additional public hearings and workshops are held for individual work projects as indicated.

The community information and participation effort has been enhanced by expansion of the agency web page and social media on the Internet, to provide citizens with greater access to agency documents and activities, establishment of a speaker's bureau, and greater emphasis on working with local media outlets. See Work Element 14: Communications and Outreach and individual project work elements for further details.



*FY 2023/24 Organizational Chart*

**Figure 2**  
**Placer County Location**



## FEDERAL PLANNING FACTORS

Federal Planning Factors are issued by Congress to emphasize specific planning issues from a national perspective, and must be identified in local planning documents. The following summary outlines how and where these planning factors are addressed in the Agency's Overall Work Program:

### **Support the economic vitality of the metropolitan area, especially by enabling global competitiveness, productivity, and efficiency.**

- SACOG/MPO Planning Integration (WE 20)
- Airport Land Use Commission/Aviation Planning (WE 27)
- Placer Parkway (WE 40)
- I-80/SR 65 Interchange Improvements (WE 41)
- Highway 65 Widening (WE 42)
- I-80 Auxiliary Lanes (WE 43)
- South Sutter South Placer Transportation Fair Share Analysis (WE 47)
- Project Programming and Reporting (WE 50)
- Regional Transportation Funding Program (WE 61)
- Freeway Service Patrol (WE 80)

*The economic vitality of Placer County depends on the ability of businesses, employees, and recreational travelers to get to and from their destinations quickly and easily through a variety of transportation modes. We plan and maintain our transportation systems with a goal of minimizing delays and maximizing choice and efficiency, thereby supporting the economic vitality of the area.*

### **Increase the safety of the transportation system for motorized and non-motorized users**

- Transportation Development Act Administration (WE 11)
- SACOG/MPO Planning Integration (WE 20)
- Western Placer Consolidated Transportation Services Agency (CTSA) Administration (WE 23)
- Airport Land Use Commission/Aviation Planning (WE 27)
- Bikeway Planning (WE 33)
- Capitol Corridor Rail Program (WE 35)
- SR 49 Sidewalks Gap Closure (WE 44)
- South Sutter South Placer Transportation Fair Share Analysis (WE 47)
- [Placer Countywide Active Transportation Plan \(WE48\)](#)
- Project Programming and Reporting (WE 50)
- Freeway Service Patrol (WE 80)

*Safety is an important consideration in project identification, selection, and implementation.*

### **Increase the security of the transportation system for motorized and non-motorized users**

- Transportation Development Act Administration (WE 11)
- Intergovernmental Coordination (WE 12)
- SACOG/MPO Planning Integration (WE 20)
- Airport Land Use Commission/Aviation Planning (WE 27)
- Bikeway Planning (WE 33)
- SR 49 Sidewalks Gap Closure (WE 44)
- South Sutter South Placer Transportation Fair Share Analysis (WE 47)

- Project Programming and Reporting (WE 50)
- Freeway Service Patrol (WE 80)

*Security of our transit and road systems are a key consideration in project identification, selection, and implementation.*

**Increase the accessibility and mobility of people and for freight**

- TDA Implementation (WE 11)
- SACOG/MPO Planning Integration (WE 20)
- Western Placer Consolidated Transportation Services Agency (CTSA) Administration (WE 23)
- Bikeway Planning (WE 33)
- Capitol Corridor Rail Program (WE 35)
- Placer Parkway (WE 40)
- I-80/SR 65 Interchange Improvements (WE 41)
- Highway 65 Widening (WE 42)
- I-80 Auxiliary Lanes (WE 43)
- SR 49 Sidewalks Gap Closure (WE 44)
- South Sutter South Placer Transportation Fair Share Analysis (WE 47)
- [Placer Countywide Active Transportation Plan \(WE48\)](#)
- Project Programming and Reporting (WE 50)
- Freeway Service Patrol (WE 80)

*Along with integration and connectivity, accessibility and mobility are the cornerstones of our transportation system maintenance and expansion decisions, and extends to all modes.*

**Protect and enhance the environment, promote energy conservation, improve the quality of life, and promote consistency between transportation improvements and State and local planned growth and economic development patterns**

- TDA Implementation (WE 11)
- Intergovernmental Coordination (WE 12)
- Intergovernmental Advocacy (WE 13)
- SACOG/MPO Planning Integration (WE 20)
- Western Placer Consolidated Transportation Services Agency (CTSA) Administration (WE 23)
- South Placer Transit Project (WE 24)
- Bikeway Planning (WE 33)
- Capitol Corridor Rail Program (WE 35)
- Placer Parkway (WE 40)
- I-80/SR 65 Interchange Improvements (WE 41)
- Highway 65 Widening (WE 42)
- I-80 Auxiliary Lanes (WE 43)
- SR 49 Sidewalks Gap Closure (WE 44)
- [Placer Countywide Active Transportation Plan \(WE48\)](#)
- Regional Transportation Funding Program (WE 61)

*Environmental assessments, aggressive expansion of alternative transportation modes, and coordination with governmental entities with land use authority are the ways that PCTPA addresses environmental concerns and connections between transportation and land use. **Enhance the***

**integration and connectivity of the transportation system, across and between modes, for people and freight**

- TDA Implementation (WE 11)
- Intergovernmental Coordination (WE 12)
- Intergovernmental Advocacy (WE 13)
- SACOG/MPO Planning Integration (WE 20)
- Western Placer Consolidated Transportation Services Agency (CTSA) Administration (WE 23)
- South Placer Transit Project (WE 24)
- Airport Land Use Commission/Aviation Planning (WE 27)
- Bikeway Planning (WE 33)
- Capitol Corridor Rail Program (WE 35)
- I-80/SR 65 Interchange Improvements (WE 41)
- Highway 65 Widening (WE 42)
- I-80 Auxiliary Lanes (WE 43)
- SR 49 Sidewalks Gap Closure (WE 44)
- South Sutter South Placer Transportation Fair Share Analysis (WE 47)
- [Placer Countywide Active Transportation Plan \(WE48\)](#)

*Along with accessibility and mobility, integration and connectivity are the cornerstones of our transportation system maintenance and expansion decisions, and extends to all modes.*

**Promote efficient system management and operation**

- TDA Implementation (WE 11)
- Intergovernmental Advocacy (WE 13)
- SACOG/MPO Planning Implementation (WE 20)
- Western Placer Consolidated Transportation Services Agency (CTSA) Administration (WE 23)
- Project Programming and Reporting (WE 50)
- Regional Transportation Funding Program (WE 61)
- Freeway Service Patrol (WE 80)

*The ever increasing demand for transportation combined with a severe lack of adequate transportation funding has necessitated PCTPA's longstanding focus on increasing the efficiency of our existing transportation systems.*

**Emphasize the preservation of the existing transportation system**

- TDA Implementation (WE 11)
- SACOG/MPO Planning Implementation (WE 20)
- Western Placer Consolidated Transportation Services Agency (CTSA) Administration (WE 23)
- Airport Land Use Commission/Aviation Planning (WE 27)
- Project Programming and Reporting (WE 50)
- Regional Transportation Funding Program (WE 61)
- Freeway Service Patrol (WE 80)

*With transportation funding at a premium, high emphasis is placed on preserving what we've got.*

**Improve the resiliency and reliability of the transportation system and reduce or mitigate storm water impacts of surface transportation**

- Intergovernmental Coordination (WE 12)
- SACOG/MPO Planning Integration (WE 20)
- Placer Parkway (WE 40)
- I-80/ SR 65 Interchange Improvements (WE 41)
- Highway 65 Widening (WE 42)
- I-80 Auxiliary Lanes (WE 43)
- South Sutter South Placer Transportation Fair Share Analysis (WE 47)
- [Placer Countywide Active Transportation Plan \(WE48\)](#)
- Regional Transportation Funding Program (WE 61)
- Freeway Service patrol (WE 80)

*A truly multi-modal transportation system is able to endure unexpected events while maintaining the mobility of the region. This can only occur through cross-jurisdictional communication and implementation of best practices.*

**Enhance travel and tourism**

- Transportation Development Act Admin (WE 11)
- Intergovernmental Coordination (12)
- Communication and Outreach (14)
- Western Placer Consolidated Transportation Services Agency (CTSA) Administration (WE 23)
- South Placer Transit Project (WE 24)
- Bikeway Planning (WE 33)
- SR 49 Sidewalks Gap Closure (WE 44)
- Regional Transportation Funding Program (WE 61)
- Freeway Service Patrol (WE 80)

*Reliable transportation options are central to maintaining and attracting visitors to Placer County's vibrant agricultural and historical tourism of the foothills and the national/international draw of the Sierra Nevada's and Lake Tahoe regions.*



## CALTRANS REGIONAL PLANNING ACTIVITIES

As the State Department of Transportation, Caltrans has numerous roles and responsibilities for planning, programming, constructing, operating, and maintaining the state’s transportation system.

Caltrans acts as a partner with PCTPA, jurisdictions, tribal governments, and other agencies to implement their various responsibilities. One arm of this effort is the Caltrans’ regional planning activities, which are described below:

ACTIVITY	DESCRIPTION	PRODUCTS
System Planning	Completion of system planning products used by Caltrans and its transportation partners consistent with the System Planning Work plan.	<ul style="list-style-type: none"> <li>• Corridor Studies</li> <li>• Operational Studies</li> <li>• Preliminary Investigations</li> </ul>
Advance Planning	Completion of pre-programming studies (e.g., Project Initiation Documents) so as to be ready to program resources for capital projects.	Project Initiation Documents (PIDs), as indicated in the current Two-Year PID Work Plan.
Regional Planning	Participate in and assist with various regional planning projects and studies.	Participation in the following projects and studies: <ul style="list-style-type: none"> <li>▪ Overall Work Programs (OWP) Development, Review, and Monitoring</li> <li>▪ Regional Transportation Plan (RTP) Development, Review, and Monitoring</li> <li>▪ Participation in Annual Coordination Meetings with Caltrans and Partners</li> <li>▪ Coordination with Caltrans via Technical and Policy Advisory Committees, and ad hoc meetings to discuss projects, plans, issues, etc.</li> <li>▪ Participation in Caltrans Headquarters Office of Regional Planning led meetings to discuss new and revised guidelines and updates to the Planning Program.</li> </ul>
Local Development Review Program	Review of local development proposals potentially impacting the State Highway System.	Assistance to lead agencies to ensure the identification and mitigation of local development impacts to the State Highway System that is consistent with the State’s smart mobility goals.

## **WORK ELEMENT 05**

### **AGENCY ADMINISTRATION: INDIRECT LABOR**

**PURPOSE:** To provide management and administration to all work elements in the Overall Work Program and to conduct day to day operations of the agency.

**BACKGROUND:** PCTPA is a public agency responsible for the administration, planning and programming of a variety of transportation funds. These activities require ongoing organization, management, administration and budgeting. This work element is intended to cover all of the day to day administrative duties of the agency and governing Board.

To clarify for purposes of allowable charges for Caltrans Rural Planning Assistance (RPA) and to specify indirect cost activities for the purposes of Caltrans Indirect Cost Allocation Plan (ICAP), this work element is split into two parts. Work Element 05 includes the majority of the administrative activities of the Agency, including accounting, agenda preparation, Board meetings, personnel activities, front desk coverage, budgeting, general management, and similar tasks.

Work Element 10 separates out the activities related to the development, update, and reporting of the Overall Work Program and Budget.

**PURPOSE:** To specify those elements of the overall Agency Administration that are billable as indirect labor under an approved Indirect Cost Allocation Plan (ICAP).

#### **WORK PROGRAM:**

- Develop agendas and materials for Technical Advisory Committee **Monthly**
- Develop agendas and materials for other PCTPA committees **As Needed**
- Conduct PCTPA Board regular monthly meetings and special meetings as required **Monthly**
- Administer PCTPA FY 2022/23 operating budget **Ongoing**
- Provide general front desk support, including greeting visitors, answering phones, opening and directing mail, and responding to inquiries **Ongoing**
- Participate in staff meetings to coordinate administrative and technical activities **Monthly**
- Prepare quarterly financial reports for auditors and PCTPA Board **Quarterly**
- Prepare timesheets to allocate staff time to appropriate work elements **Ongoing**
- Perform personnel duties, including employee performance reviews, recognitions, and/or disciplinary actions **Annually/as needed**
- Recruit and hire new employees **As needed**
- Administer PCTPA benefit programs **Ongoing**
- Update Administrative Operating Procedures and Personnel Policies to reflect changes in State and Federal law **As Needed**
- Prepare payroll and other agency checks **Bi-weekly**
- Prepare quarterly and annual tax reports **Quarterly**
- Maintain transportation planning files, correspondence and data **Ongoing**
- Maintain ongoing bookkeeping and accounting **Ongoing**

**WORK ELEMENT 05 (continued)**  
**AGENCY ADMINISTRATION: INDIRECT LABOR**

- Maintain and update computer systems and equipment, including all information technology (IT) related tasks **Ongoing**
- Update PCTPA Bylaws to reflect changes in State and Federal law **As Needed**
- Attend governmental and professional conferences and training sessions, such as those offered by the American Planning Association (APA), Women’s Transportation Seminar (WTS), American Leadership Forum (ALF), and Institute of Transportation Engineers (ITE) **As justified**

**PRODUCTS:**

- PCTPA meeting agendas and staff reports, paper and online versions **Monthly**
- List of warrants **Monthly**
- Quarterly reports of PCTPA operating budget status **Quarterly**
- Updated Bylaws, Operating Procedures and Personnel Policies **As Needed**
- Employee performance reviews **Annually**
- Actuarial analysis of benefit programs **As needed**
- Employee timesheets **Bi-weekly**
- Reports and updates to Board and/or member agencies on Federal, State, and regional programs and policies **Ongoing**

<b>REVENUES</b>		<b>EXPENDITURES</b>	
Various – proportionately spread across all other work elements/fund types	-\$371,928 \$401,944	PCTPA	\$371,928 \$401,944

**WORK ELEMENT 10**  
**AGENCY ADMINISTRATION: OVERALL WORK PROGRAM**

**PURPOSE:** To specify those elements of the overall Agency Administration that are billable as direct costs to Rural Planning Assistance (RPA) funds.

**PREVIOUS WORK:**

- FY 2021/22 closeout with Caltrans staff **August 2022**
- FY 2022/23 Overall Work Program and Budget amendments **October 2022 and April 2023**
- Preliminary Draft FY 2023/24 Overall Work Program and Budget **March 2023**
- Final FY 2023/24 Overall Work Program and Budget **May 2023**

**WORK PROGRAM:**

- Prepare FY 2023/24 Overall Work Program and Budget close out documents for fiscal year 2022-23 **July 2023 – August 2023**
- Prepare amendments to FY 2023/24 Overall Work Program (OWP) and Budget **August 2023 - October 2023, January - April 4 or as needed**
- Prepare FY 2024/25 Overall Work Program and Budget **January 2024 – May 2024**
- Review and monitor new and proposed programs and regulations applying to transportation planning, such as the Regional Planning Handbook, that may need to be addressed in the Overall Work Program **Quarterly/as needed**

**PRODUCTS:**

- Conduct FY 2022/23 closeout with Caltrans staff **August 2023**
- Quarterly progress reports on FY 2022/23 Overall Work Program **Quarterly**
- FY 2023/24 Overall Work Program and Budget amendments **October 2023, April 2024, or as needed**
- Preliminary Draft FY 2024/25 Overall Work Program and Budget **February 2024**
- Final FY 2024/25 Overall Work Program and Budget **May 2024**

<u>REVENUES</u>		<u>EXPENDITURES</u>		
LTF		PCTPA		
	\$35,995		\$60,995	
	\$38,199		\$63,199	
Rural Planning Assistance Funds	\$25,000			
TOTAL	\$60,995		\$60,995	
	\$63,199		\$63,199	
Percent of Budget <del>86</del>				
.93%				

## **WORK ELEMENT 11**

### **TRANSPORTATION DEVELOPMENT ACT ADMINISTRATION**

**PURPOSE:** To effectively administer all aspects of the Transportation Development Act (TDA) in the jurisdiction of the Placer County Transportation Planning Agency.

**BACKGROUND:** As the Regional Transportation Planning Agency, the most basic responsibility of PCTPA is to administer TDA funds and related programs. Currently, PCTPA administers TDA funds of approximately \$20 - 30 million annually. These funds operate public transit, maintain and construct local roads, and construct bicycle and pedestrian paths. Under the TDA, PCTPA is also responsible for carrying out the annual unmet transit needs process, fiscal audits, performance audits, transit planning, and transit coordination.

#### **WORK PROGRAM:**

- Solicit public comments on unmet transit needs throughout Placer County **September 2023 – October 2023**
- Review and summarize all comments received regarding unmet transit needs **November - December 2023**
- Evaluate current existing services and their effectiveness in meeting transit needs and demand **December 2023 – January 2024**
- Prepare a report recommending a finding on unmet transit needs **January 2024 - February 2024**
- Provide for the management of the Local Transportation Fund (LTF) **Ongoing**
- Prepare a final estimate of LTF and STA apportionments for FY 2023/24 **September 2023**
- Prepare a mid-year status update on FY 23/24 LTF and STA actual revenues to estimates **March 2024**
- Prepare a preliminary estimate of LTF and STA apportionments for FY 2023/24 **February 2024**
- Assist claimants with the preparation of project lists, annual claims, and local program administration **Ongoing**
- Provide for the review, approval, and processing of all LTF and other TDA claims and financial transactions **Ongoing**
- Update policies governing review, approval, and processing of all LTF and other TDA claims to ensure timely compliance with TDA law **As needed**
- Maintain a financial status report of TDA and STA claims **Ongoing**
- Provide for an annual financial and compliance audit of PCTPA and each claimant by an independent auditing firm **September 2023 – March 2024**
- Update and administer five year plan for Bicycle and Pedestrian Account funds. **Ongoing**
- Monitor legislation pertinent to the Transportation Development Act and assist with any efforts to revise TDA regulations that would benefit the Placer region **Ongoing**
- Provide technical assistance to paratransit operators and monitor activities **Ongoing**
- Facilitate and monitor activities of the Social Services Transportation Advisory Council (SSTAC) **Annually**
- Facilitate and monitor activities of the Transit Operators Working Group (TOWG) **Monthly**

**WORK ELEMENT 11 (continued)**  
**TRANSPORTATION DEVELOPMENT ACT ADMINISTRATION**

- Coordinate planning efforts for FTA funds to avoid duplication of services and maximize resources **Ongoing**
- Coordinate with Sierra College on implementing potential college student transit pass **Ongoing**

**PRODUCTS:**

- Final Findings of Apportionment for FY 2023/24 ~~September~~ **October 2023**
- Preliminary Annual Findings of Apportionment for FY2024/25 **February 2024**
- A report summarizing the unmet transit needs testimony, including analysis and recommendations for findings of unmet transit needs **February 2024**
- Financial and Compliance Audits of PCTPA and all TDA claimants **March 2024**
- TDA and STA claims **Ongoing**
- SSTAC meeting agendas **Ongoing**
- TOWG meeting agendas **Ongoing**

<u>REVENUES</u>		<u>EXPENDITURES</u>	
LTF	\$153,868 \$135,901	PCTPA	\$108,888 \$90,921
		Legal	500
		Meetings, Travel, and Notifications	1,000
		Fiscal Audit Consultant	\$43,480
<b>TOTAL</b>	\$153,868 \$135,901		\$153,868 \$135,901
Percent of budget: <del>2.17</del> 2.00%			

## **WORK ELEMENT 12 INTERGOVERNMENTAL COORDINATION**

**PURPOSE:** To share information and coordinate with outside agencies and jurisdictions on matters pertinent to the development of effective transportation plans and projects.

### **BACKGROUND:**

PCTPA works very closely and continuously with numerous outside agencies as a way of coordinating our planning efforts. In particular, we work with the Sacramento Area Council of Governments (SACOG), as the Metropolitan Planning Organization (MPO) for our area, to implement Federal and State transportation programs. While many of our interactions are specified under our Memorandum of Understanding, regional interests and overlapping jurisdictions provide additional need for close coordination. On a larger regional basis, PCTPA works closely with [Caltrans District 3](#), the Tahoe Regional Planning Agency (TRPA) and Nevada County Transportation Commission (NCTC) on connections both to and within the Truckee/North Tahoe area. On a statewide basis, we work closely to coordinate and share information with the California Transportation Commission (CTC) [and Caltrans](#), as well as other regional agencies through groups such as the Regional Transportation Planning Agency (RTPA) Group, Rural Counties Task Force (RCTF), and California Association of Councils of Government (CALCOG). In addition, PCTPA works in close coordination with the Placer County Air Pollution Control District (APCD) on transportation/air quality issues.

Given PCTPA's somewhat unique mix of rural, suburban and urban perspective, expertise in transportation planning and funding, and proximity to Sacramento, PCTPA staff is often asked to advise or participate on advisory committees and ad-hoc efforts on a variety of transportation planning issues. As many of these efforts spring up in response to current situations, it's impossible to anticipate every instance that might occur throughout a given year. These can range from providing input on multi-jurisdiction corridor plans to strategic planning on improving mobility in a particular geographic area to participating on a task force to develop guidelines to implement the Governor and/or State Legislature's latest transportation initiative.

### **WORK PROGRAM:**

- Participate in ad hoc and standing Caltrans policy and technical advisory committees, such as the Regional-Caltrans Coordinating Group **Bi-monthly/as scheduled**
- Participate in ad hoc and standing SACOG policy, financial and technical advisory committees, such as Regional Planning Partnership and Transportation Committee **Monthly/as scheduled**
- Participate at California Transportation Commission meetings and workshops **Monthly/as scheduled**
- Participate in Statewide Regional Transportation Planning Agency Group meetings and subcommittees **Monthly/as scheduled**
- Participate in Statewide Rural Counties Task Force meetings **Bi-monthly/as scheduled**
- Participate in information sharing activities at California Council of Governments (CALCOG) meetings and conferences **Bi-monthly/as scheduled**
- Participate in Tahoe-focused planning efforts **As scheduled**

**WORK ELEMENT 12 (continued)**  
**INTERGOVERNMENTAL COORDINATION**

- Coordinate with the Placer County Air Pollution Control District, Sacramento Metropolitan Air Quality Management District, SACOG, and the California Air Resources Board to develop strategies to reduce air pollution **Ongoing**
- [Attend technical and management meetings for interregional planning efforts and projects lead by other agencies As needed](#)
- Attend city council and Board of Supervisors meetings **As needed**
- Coordinate and consult with the United Auburn Indian Community of the Auburn Rancheria, including attending tribal meetings **As needed**
- Coordinate with and inform jurisdictions on potential changes in State or Federal planning policies **As needed**
- Hold technical workshops for Placer County jurisdictions **As needed**

**PRODUCTS:**

- Staff reports to Board and jurisdictions on pertinent topics **As needed/in accordance with above schedules**
- Commentary on white papers, draft plans and policies, and similar correspondence and communications to other governmental agencies **As needed/in accordance with above schedules**

<b><u>REVENUES</u></b>		<b><u>EXPENDITURES</u></b>	
LTF	\$90,204 \$103,116	PCTPA	\$100,204 \$98,116
State Transportation Improvement Program (STIP) Planning, Programming, and Monitoring (PPM)	20,000	Meetings, Travel, and Notifications	10,000
<b>TOTAL</b>	<b>\$110,204</b> <b>\$123,116</b>		<b>\$110,204</b> <b>\$123,116</b>
Percent of budget: <del>1.55</del> 1.81%			



## **WORK ELEMENT 13 INTERGOVERNMENTAL ADVOCACY**

**PURPOSE:** To represent Agency needs and priorities with outside agencies and jurisdictions and advocate on matters pertinent to transportation planning, programming, and funding.

**BACKGROUND:** The actions of State and Federal legislative bodies and regulatory agencies have a huge impact on the effectiveness of PCTPA's efforts to plan, program, fund, and implement transportation improvements. Legislative bodies and regulatory administrators often propose policies to improve one issue while creating major challenges elsewhere. It is therefore critical to represent the Agency's positions with these entities, make sure they understand the impacts, and do our best to ensure that their actions and activities reflect PCTPA's needs. Staff efforts are augmented by our Federal and State advocates, who advise and advocate on our behalf, as well as teaming with other entities with like interests, all with an eye to maximize the effectiveness of our efforts.

### **WORK PROGRAM:**

- Participate in Sacramento Metro Chamber's annual virtual Cap-to-Cap and State legislative advocacy effort **and Spring of 2024**
- Participate in the Placer Business Alliance Washington DC trip – **October 2023**
- Participate in Statewide California Council of Governments (CALCOG) advocacy efforts **Ongoing/as needed**
- Participate with ad-hoc coalitions and groups to advocate for shared priorities in transportation projects and funding, such as the Fix Our Roads coalition **As needed**
- Develop annual Federal legislative and advocacy platform **January 2024**
- Develop annual State legislative and advocacy platform **January 2024**
- Monitor and analyze pertinent legislation **Ongoing**
- Monitor and analyze regulatory agency directives and policies **Ongoing**
- Communicate Agency positions on pertinent legislation and regulatory directives **As needed**
- Meet with State and Federal legislators and their staff to discuss Agency issues **As needed**
- Assist, facilitate, and advocate for jurisdiction transportation issues with State and Federal agencies **As needed**
- Craft and advocate for Board sponsored legislation, such as for a transportation sales tax district **Ongoing/as needed**
- Membership in local chambers of commerce including Auburn, Lincoln, Loomis, Rocklin, Roseville, and Sacramento **Ongoing**

### **PRODUCTS:**

- Attend Self-Help Counties Focus on the Future Conference **November 2023**
- Attend PBA trip to DC – **October 2023**
- Attend Cap to Cap trip to DC - **Spring of 2024**
- 2023 Federal Legislative Platform **January 2024**
- 2023 State Legislative Platform **January 2024**

**WORK ELEMENT 13 (continued)**  
**INTERGOVERNMENTAL ADVOCACY**

- Information packages or proposals for priority programs and projects **As needed**
- Information packages on high priority projects for Federal and State advocacy **March 2024**
- Analysis and recommendations on Federal and State legislative proposals **As needed**
- Letters supporting or opposing pertinent legislation **As needed**

<u>REVENUES</u>		<u>EXPENDITURES</u>	
LTF	\$196,483 \$169,022	PCTPA	\$60,995 \$69,423
Interest	2,000 \$10,000	Travel and Conference Expenses	\$10,000
		Legislative Tracking Services	4,650
		Chamber of Commerce Memberships	6,200
		CalCOG Membership	3,399
		State Advocacy Consultant	30,000
		Federal Legislative Advocate	\$75,000 \$60,000
<b>TOTAL</b>	\$198,483 \$179,022		\$198,483 \$179,002
Percent of budget: <del>2.80%</del> 2.63%			

## **WORK ELEMENT 14 COMMUNICATIONS AND OUTREACH**

**PURPOSE:** To inform the public of the Agency's activities and issues of interest, and to gather effective public input

**BACKGROUND:** As the transportation system in California and in Placer County faces more and greater challenges, it is even more critical that the public be aware and informed about transportation issues, the role of PCTPA, and the activities we are doing now and planning for the future. This awareness translates to a higher level of public discussion/participation and informed approaches to dealing with transportation issues.

As the Regional Transportation Planning Agency (RTPA) for Placer County, PCTPA serves as a clearinghouse of information about transportation issues as they may affect citizens, businesses, and travelers. Many of those issues are in regards to future plans, while others may concern existing conditions. This work element is intended to cover all of the day-to-day communications activities and public/stakeholder outreach functions of the Agency and governing Board.

This work element covers the more general public outreach and input that is both important and required by federal and/or state regulations for administering transportation planning and project/program/service delivery activities. Outreach for specific efforts, including transit and rail, I-80/SR 65 Interchange, SR 65 Widening, I-80 Auxiliary Lanes, SR 49 Sidewalks Gap Closure, and the Regional Transportation Funding Strategy are covered under those work elements. Advocacy and lobbying, including policy advocacy outreach or requests for project funding, are covered under Work Element 13: Intergovernmental Advocacy.

### **WORK PROGRAM:**

- Develop and distribute informational pieces to the public, such as brochures, about Agency activities and responsibilities **Ongoing**
- Provide outreach and presentations to interested groups, such as Municipal Advisory Committees, Chambers of Commerce, neighborhood associations, and business groups, on Agency activities and responsibilities **Ongoing/as requested**
- Provide information about transportation options for the general public, including distribution of schedules and informational pieces about transit trip planning, at the Agency offices **Ongoing**
- Administer and update the Agency's Title VI and Disadvantaged Business Enterprise (DBE) programs as required by the federal and/or state regulations pertaining to the funding that the Agency receives for delivering its transportation projects, programs, and services. **Ongoing/as needed**
- Solicit and facilitate input of public on transportation issues by specifically including Agency website address, e-mail address, phone number, , and physical address in all outreach materials. **Ongoing**
- Seek opportunities for partnerships with jurisdictions, tribal governments, community groups, and others to provide greater breadth of outreach **Ongoing**

## **WORK ELEMENT 14 (continued)**

### **COMMUNICATIONS AND OUTREACH**

- Review local newspapers and news outlets' coverage of issues that affect transportation and disseminate to Board members, jurisdictions, the public, and other appropriate parties **Ongoing**
- Provide prompt responses to public inquiries and concerns, including raising them to Advisory Committee or Board attention as appropriate **Ongoing**
- Major update of the current agency website - [www.pctpa.net](http://www.pctpa.net) **July-December 2023**
- Post Board agenda, minutes, and meeting recordings on agency web site **Monthly**
- Provide outreach and respond to inquiries by the media to provide information and analysis of transportation issues that face Placer County and highlight agency activities and input opportunities, including television, radio, newspapers, and other media **Ongoing**
- Develop and implement social media program to highlight transportation programs, projects, issues, and other information pertinent to the traveling public **Ongoing**
- Develop and distribute "e-newsletter" with updates on transportation projects and programs, spotlighting current and upcoming transportation issues **Bi-annually**
- Hold meetings, workshops, and/or events to capture public attention, disseminate information, and/or solicit input about transportation issues **Ongoing**
- Bring attention to milestones on transportation projects and programs through signage, events, social media, websites, and other appropriate methods **Ongoing/As needed**
- Develop marketing and outreach materials for programs that provide transportation options in Placer County **Ongoing**
- Create, maintain and update agency websites that provide education and information regarding transportation options in Placer County **Ongoing**
- Provide support for alternatively fueled vehicles, including EV charging station **Ongoing**
- Actively participate as a member of the TNT/TMA and support public education and outreach activities applicable to the Truckee-North Tahoe area **Ongoing**

#### **PRODUCTS:**

- Information pieces, such as Power Point presentations and brochures, about Agency activities and responsibilities **Ongoing**
- PCTPA "e-newsletter" **Bi-annually**
- Social media postings **Ongoing**
- Posting of video recordings of Board meetings **Monthly**
- Major Update and regular Agency web site updates June-December 2023 **going**
- Board agenda postings on website **Monthly**
- Project and event signage **As needed**
- Title VI and/or DBE Program updates **As needed**
- Meeting notifications and advertising **As needed**

**WORK ELEMENT 14 (continued)**  
**COMMUNICATIONS AND OUTREACH**

- Project and event website construction and maintenance **As needed**
- Fact sheets, program and project summaries, and other printed materials **As needed**
- Nevada Station Electric Vehicle Station operation reports **Ongoing**
- TNT/TMA progress reports and invoices **Quarterly**

<u>REVENUES</u>		<u>EXPENDITURES</u>	
LTF	\$120,265 \$120,137	PCTPA	\$69,234 \$69,417
CMAQ	40,500	Communications Consultant (Item funded by CMAQ)	47,500
		Graphics Consultant	\$25,000
		Meeting Supplies, Travel, and Postage	10,000
		TNT/TMA Education/Outreach	<del>6,400</del> 6,720
		Alternative Fuel Vehicle Marketing/Support (Item funded by CMAQ)	2,000
TOTAL	\$160,765 \$160,637		\$160,765 \$160,637
Percent of budget:			
<del>2.77%</del> 2.36%			

**WORK ELEMENT 15  
BUILDING ADMINISTRATION**

**PURPOSE:** To provide management and administration of the Agency's office property.

**BACKGROUND:** The Nevada Station building, located adjacent to the Auburn Multimodal Station, was purchased to serve as the Agency’s permanent office space. The office property totals 16,810 square feet, and includes several rental spaces in addition to the Agency's area. Management and operation of the facility is part of that ownership responsibility.

**WORK PROGRAM:**

- Maintain accounting for revenue and expenses for the office property **Ongoing**
- Collect rents as scheduled, implementing collection procedures as necessary **Monthly**
- Work with property manager to ensure all maintenance and repair issues are identified and resolved quickly and completely **Ongoing**
- Contract with qualified individuals and firms to provide maintenance and repairs on a timely and cost-effective basis **As needed**
- Work with leasing agent to secure tenants and negotiate leases **As needed**

**PRODUCTS:**

- Accounts receivable, accounts payable, balance sheets, and other accounting records **Ongoing**
- Tenant leases **As needed**

<u>REVENUES</u>		<u>EXPENDITURES</u>	
Nevada Station Property	\$36,173 \$36,488	PCTPA	\$36,173 \$36,488
TOTAL	\$36,173 \$36,488		\$36,173 \$36,488
Percent of budget: <del>.51%</del> .54%			

## **WORK ELEMENT 20**

### **SACOG/MPO PLANNING INTEGRATION & REGIONAL TRANSPORTATION PLAN (RTP)**

**PURPOSE:** To update the Placer County Regional Transportation Plan and coordinate with SACOG on the development of the Metropolitan Transportation Program (MTP) and Sustainable Communities Strategies (SCS).

**BACKGROUND:** Regional Transportation Planning Agencies (RTPAs) are required to update their RTPs every five years. The current Placer County Regional Transportation Plan (RTP) 2040 was adopted by the Board in December 2019. The RTP provides the long-range, comprehensive direction for transportation improvements within Placer County. The RTP includes regional transportation goals, objectives, and policies that guide the development of a balanced, multi-modal transportation system. The RTP also includes a financial analysis that forecasts transportation funding available over the twenty year horizon of the plan.

PCTPA actively participated with SACOG and our other regional partners in the update of the six-county Metropolitan Transportation Plan (MTP), which was adopted in November 18, 2019. Technical reasons for this joint effort include reference to the PCTPA/SACOG Memorandum of Understanding (MOU) dated April 11, 2001, which states SACOG provides air quality conformity and other federal requirements for the RTP. The next iteration of the SACOG MTP is anticipated for adoption in early 2024.

The SACOG MTP also meets all the latest requirements of SB375 and AB32, which includes the consideration of the integration of land use, transportation, and air quality. Moreover, the plan also includes the required Sustainable Communities Strategies to implement these plans. The collaborative approach provided by the coalition of transportation partners throughout the six-county region means improved interregional coordination, as well as ensuring that Placer projects and priorities are integrated into a cohesive regional plan as provided in the MOU.

Staff kicked off the development of the 2050 RTP in FY 2021/22 with a presentation to the PCTPA Board in February 2022. Although adoption of the plan is not required until December 2024, staff plans to reevaluate the structure and contents of the plan to emphasize linkages between policies and outcomes and to make it more user friendly. The 2050 RTP will also be developed in coordination and on a slightly delayed schedule with the SACOG MTP/SCS, being referred to as the 2024 Blueprint. This approach will ensure consistency between the planning efforts due to the complexity and dynamic planning environment in the Sacramento Region. The parallel schedules of the two efforts creates an opportunity to maximize efficiencies and effectiveness in addressing Placer's needs and goals. The technical coordination with SACOG will consist of the following activities:

## **WORK ELEMENT 20 (continued)**

- Model Development and Support – PCTPA (SACOG Project #SAC108)
  - This project includes SACOG staff time for Placer County-related travel demand and transportation modeling, data assembly, analysis, and monitoring work.
- Data Development, Monitoring, and Support – PCTPA (SACOG Project #SAC119)

## **SACOG/MPO PLANNING INTEGRATION & RTP**

- As part of its role in analyzing the combined effects of land use patterns and phased investments in transportation infrastructure and services, SACOG must establish consistent, comprehensive and complete datasets quantifying and describing land use, transportation, and demographic characteristics for Placer County.
- MTP/SCS Update – PCTPA (SACOG Project #SAC127)
  - SACOG is required to update the long-range, six county Metropolitan Transportation Plan/Sustainable Communities Strategy at least every four years. The next update of the plan is scheduled to be completed in 2025. During FY 2023/24 SACOG in partnership with federal, state, and local partners, will be developing a final preferred transportation investment/project list, which will be integrated with a final land use scenario for their Blueprint MTP/SCS. The Placer County portion of the final preferred project list will also serve as the project list for PCTPA’s 2050 RTP.
- Performance-Based Planning and Programming – PCTPA (SACOG Project #SAC130)
  - As required under the FAST Act, and/or any other subsequent regulations implemented under the new Infrastructure Investment and Jobs Act (IIJA), SACOG is required to update and report on progress toward achieving performance measures targets related to safety, air pollution emissions, infrastructure condition, freight movement, congestion, and reliability. Activities will include inclusion of Placer County data into the metrics and updates to the Project Performance Assessment tool created by SACOG.

## **PREVIOUS WORK:**

### PCTPA

- Initiated review and development of RTP’s goals, policies, and objectives **February 2023 - April 2023**
- Developed a public participation plan for the RTP **September 2022**
- Coordinated with SACOG on pathway development and outreach for the Blueprint MTP/SCS **March 2023 – June 2023**
- Coordinated with SACOG on data collection, jurisdiction one-on-one meetings, and 2024 Blueprint Framework – **June 2022 – June 2023**
- Coordinated first round of public engagement/outreach for PCTPA’s RTP **October – December 2022**



## **WORK ELEMENT 20 (continued)**

### SACOG

- Model development and Support for PCTPA
  - Provide data analysis and modeling assistance to Placer County jurisdictions **July 2022 – June 2023**
- MTP/SCS Update – PCTPA (SACOG Project #SAC127)
  - Developed regional six-county growth projections for the 2024 MTP/SCS, which assist PCTPA with RTP’s growth projections **September 2022**

### **SACOG/MPO PLANNING INTEGRATION & RTP**

- Plan process map, policy framework, and outreach strategy for MTP/SCS in coordination with PCTPA. **September 2022 – December 2022**

### **WORK PROGRAM:**

#### PCTPA

- Participate in statewide RTP Guidelines update efforts **As needed**
- Monitor and track amendments to the SACOG 2020 MTP/SCS and/or the PCTPA RTP **Monthly**
- Congestion Management Plan updates **As needed**
- Continue development of 2050 RTP elements/chapters **July 2023 – June 2024**
- Review and coordinate with SACOG on Blueprint MTP/SCS scenario planning – **July 2023 – August 2023**
- Develop an equity plan and implementation strategy for the PCTPA RTP using on-call consulting resources (\$20,000 estimated for consultant support to assist with equity plan preparation) **July 2023 – September 2023**
- Conduct second round of public engagement/outreach for PCTPA’s RTP, which may consist of digital and/or in-person workshops, social media campaigns, surveys, and staff pop-up events. PCTPA will use its on-call communications consultant to assist with the production of noticing materials, project information, webinars, and other materials supporting this outreach effort (\$40,000 estimated for outreach/engagement consultant support) **October 2023 – December 2023**
- In coordination with SACOG, prepare an interim RTP update (with updated financial assumptions, project programming, etc.), which will allow for PCTPA to continue working with SACOG on development of the 2050 RTP and Blueprint (anticipated to be adopted in late 2025). **August 2023 – January 2024**
- Coordinate with SACOG on the development of final preferred transportation project lists for the PCTPA RTP and SACOG’s MTP/SCS (preferred project lists must be the same) **July 2023 – December 2023**

## **WORK ELEMENT 20 (continued)**

- Prepare and release a request for proposals to secure a consultant to begin preparation of a programmatic environmental impact report (EIR) associated with evaluating PCTPA's RTP's preferred project list (\$60,000 estimated for consultant EIR preparation) **April/May 2024**
- Coordinate with SACOG on development of forecasted transportation funding through 2050 for RTP and MTP/SCS planning efforts – **July 2023 – June 2024**
- Coordinate with SACOG to develop materials for hosting an elected officials' workshops required of the Blueprint MTP/SCS – **Spring 2024**

### SACOG

- Model development and Support – PCTPA
  - Provide data analysis and modeling assistance to Placer County's various plan updates, including integration of efforts with the Congestion Management Process. **July 2023 – June 2024**
- Data Development, Monitoring, and Support – PCTPA
  - Provide data analysis and mapping assistance to Placer County's various plan updates, including demographics, environmental layers, and transportation data for all jurisdictions and special districts. **July 2023 – June 2024**
- MTP/SCS Update – PCTPA

### **SACOG/MPO PLANNING INTEGRATION & RTP**

- Engage in outreach and engagement with stakeholders through advisory working groups, partner meetings, online materials, presentations, and SACOG's board and committee meetings. **Monthly**
- Prepare for and hold public workshops and elected official information sessions as required by state and federal guidelines. **July 2023 – June 2024**
- Prepare and adopt a preferred transportation investment/project list for the Blueprint MTP/SCS and PCTPA 2050 RTP. **July 2023 – December 2023**
- Performance-Based Planning and Programming – PCTPA (SACOG Project #SAC130)
  - Monitor safety performance data and set targets for PM1. **Ongoing**
  - Monitor NHS conditions and bridge conditions and set new 2-yr and 4-yr targets for PM2. **Ongoing**
  - Monitor regional system performance metrics and set new 2-yr and 4-yr targets for PM3. **Ongoing**
  - Participate in state and federal meetings to develop statewide targets in partnership with Caltrans and MPOs. **Ongoing**
  - Update project performance assessment (PPA) tool and interactive spatial performance metric display. **Ongoing**
  - Continually maintain and implement CMAQ Performance Plan. **As Needed**

## **WORK ELEMENT 20 (continued)**

### **PRODUCTS:**

#### PCTPA

- Amendments to the PCTPA RTP **As needed**
- Coordination with SACOG on travel demand modeling and MTP/SCS implementation **As needed**
- Continue using MetroQuest community engagement software (\$20,000 for software license renewal) for RTP development and public outreach **July 2023 – June 2024**
- PCTPA RTP equity plan and implementation with consulting assistance (\$20,000) **July 2023 – September 2023**
- PCTPA RTP outreach/engagement with consulting assistance (\$40,000) **October 2023 – December 2023**
- Interim RTP document **January 2024**
- PCTPA RTP EIR development with consulting assistance (\$60,000) **Spring 2024**
- Coordinate with SACOG on Congestion Management Plan updates **As needed**
- PCTPA/SACOG RTP/MTP workshop agenda and materials **As needed**
- Draft RTP transportation project list in coordination with SACOG's MTP/SCS preferred land use and transportation project scenario development **July 2023 – December 2023**

#### SACOG

- Model development and Support – PCTPA

### **SACOG/MPO PLANNING INTEGRATION & RTP**

- Support provided and outcomes memo **As needed**
- Data Development, Monitoring, and Support – PCTPA **Ongoing**
- MTP/SCS Update – PCTPA (SACOG Project #SAC127)
  - Public Workshops. **July 2023-June 2024**
  - Elected Official Information Sessions. **Summer 2023-Winter 2024**
  - Preferred Pathway Framework. **July 2023-September 2023**
- Performance-Based Planning and Programming – PCTPA (SACOG Project #SAC130)
  - Assist with development of and support Regional or Statewide PM1 Safety Targets for 2023/2024 - SACOG Board Action. **Ongoing**

**WORK ELEMENT 20 (continued)**

<b>REVENUES</b>		<b>EXPENDITURES</b>	
LTF	\$492,786 \$479,131	SACOG (\$397,000 from RPA)	\$522,755
Rural Planning Assistance	397,000	PCTPA	<del>284,031</del> 270,376
Planning, Programming, and Monitoring (PPM)	60,000	Consultant Support for RTP equity plan development, second round of public outreach and engagement, and EIR development (paid with LTF)	120,000
		Community Engagement Software (MetroQuest) (paid with LTF)	20,000
		Legal (on-call support for reviewing RTP related documents and other joint PCTPA/SACOG planning efforts established under the MOU)	1,000
		Meetings, Travel, and Notifications (supporting budget for reimbursement of direct travel and/or purchases made to support the RTP public outreach activities and/or SACOG planning/public engagement efforts)	2,000
<b>TOTAL</b>	<b>\$949,786</b> <b>\$936,131</b>		<b>\$949,786</b> <b>\$936,131</b>
Percent of budget:	<del>13.39%</del> 13.75%		

## **WORK ELEMENT 23**

### **WESTERN PLACER CONSOLIDATED TRANSPORTATION SERVICES AGENCY (CTSA) ADMINISTRATION**

**PURPOSE:** To provide staffing and administrative support for the Western Placer Consolidated Transportation Services Agency (CTSA) Joint Powers Authority (JPA).

**BACKGROUND:** The Consolidated Transportation Service Agency (CTSA) designation was created by California law as a means of strengthening and coordinating the social service transportation programs of nonprofit organizations and, where appropriate, to serve as the focus for consolidation of functional elements of these programs, including the provision of transportation services. For Placer County, the CTSA designation was held by Pride Industries from 1997 until they resigned effective December 31, 2007.

When no other suitable candidate was found to undertake the role, the seven jurisdictions of Placer County formed a Joint Powers Authority to take on the role of the CTSA. The result was the Western Placer CTSA JPA, which was created on October 13, 2008 by Placer County and the cities of Auburn, Colfax, Lincoln, Rocklin, and Roseville, and the Town of Loomis to provide CTSA services. Under the terms of the JPA, PCTPA provides administrative services for the JPA.

#### **WORK PROGRAM:**

- Provide administrative, accounting, and staff support for the CTSA JPA **Ongoing**
- Oversee the implementation of CTSA as delineated in the Joint Powers Agreement, including Placer Rides, Transit Ambassador, and the South Placer Transportation Call Center, Bus Pass Subsidy, and Mobility Management programs per Memoranda of Understanding **Ongoing**
- Continue implementation of the marketing plan, approved by the PCTPA Board in January 2023, in coordination with the region's three public transit operators, Seniors First, and other social service transportation agencies and public stakeholders. The marketing plan's intent is to bring awareness to, promote and increase demand for the WPCTSA Mobility Training/Transit Ambassador, South Placer Transit Information Center, and Placer Rides programs as well as general public transit services and transportation programs currently available in Placer County. **Ongoing**
- Develop a one-stop-shop (OSS) website using the [www.sptransitinfo.org](http://www.sptransitinfo.org) url to provide a centralized online location for all information regarding Placer's public transit services, including an interactive transit system route and demand response service map **February 2023 – December 2023**
- Refresh the branding and content for marketing materials/collateral for the WPCTSA's Mobility Training/Transit Ambassador and Placer Rides Programs to ensure information consistency and promotional effectiveness in collaboration with the City of Roseville, Seniors First, and other stakeholders from the Transit Operators Working Group (TOWG) and general public **February 2023 – December 2023**  
Develop and print coordinated transit schedules **Ongoing**

**WORK ELEMENT 23 (continued)**

**CTSA ADMINISTRATION**

- Implement WPCTSA SRTP recommendations as needed **Ongoing**
- Develop agenda items for CTSA Board and advisory committees **Monthly/as needed**
- Provide financial information to Board **Ongoing**
- Provide information and reports to interested groups, and citizens **Ongoing**
- Coordinate with SACOG on Federal and/or State funding opportunities available for the region’s social service transportation providers as well as implementing and/or updating the SACOG Human Services Coordination Plan. **Ongoing**

**PRODUCTS:**

- Joint Powers Agreement amendments **As needed**
- Memorandum of Understanding amendments **As needed**
- CTSA FY 2023/24 Budget updates **As needed**
- CTSA FY 2024/25 Budget **June 2024**
- Contracts for CTSA transit services **Annually/as needed**
- CTSA Board agendas and minutes **Quarterly/as needed**
- CTSA financial reports **Quarterly**
- OSS website **December 2023**
- Reports, audits, and other documentation required of CTSAAs **July 2023 – June 2024 / as needed**

<u>REVENUES</u>		<u>EXPENDITURES</u>	
CTSA	\$132,980 \$142,310	PCTPA	\$132,980 \$142,310
TOTAL	\$132,980 \$142,310		\$132,980 \$142,310
Percent of budget: <del>1.87%</del> 2.09%			

## **WORK ELEMENT 24 TRANSIT PLANNING**

**PURPOSE:** To implement enhanced transit service for south Placer County.

### **BACKGROUND:**

PCTPA actively works with its member agencies and transit operators to improve the public transit system in Placer County. With an increased focus on alternatives to driving alone at the state and federal level, PCTPA's work to expand travel options in Placer County has become a larger part of the agency's work. The COVID-19 epidemic only exacerbated the need for Placer County to rethink how it provides transit services. This Work Element includes general transit planning and coordination, as well as the implementation of key regional transit services, such as the South Placer Transit Project (known as the Rapid Link), the Placer County-Roseville-Auburn microtransit pilot program (known as Go South Placer On-Demand). The South Placer Transit Project will connect South Placer County to the high-frequency Sacramento Light Rail transit system and provide Lincoln residents an efficient alternative to driving and increased congestion and the continued need for enhanced transit services in the Highway 65 Corridor. The new route would begin and end with a stop in the City of Lincoln, continue along the Highway 65 corridor with stops at Sutter Roseville Medical Center, Kaiser Permanente Roseville, and the Roseville Galleria shopping center, and terminate at the Watt/I-80 light rail station in Sacramento County. Sacramento Regional Transit's light rail service would then enable passengers to travel to and from downtown Sacramento, the Railyards and other key destinations within Sacramento County. Go South Placer On-Demand is a mobile app-based platform that utilizes software technology to support new, on-demand transit service in areas of Placer County, Roseville, and Auburn that may currently be underserved and/or underutilized with existing public transit options. Starting in Spring 2023, PCTPA began a collaborative planning effort with the region's public transit service operators, social service transportation agencies, and other public stakeholders to develop a comprehensive operational analysis (COA) and short-range transit plan (SRTP) for the Placer region. The COA and SRTP intend to develop a new transit system network that addresses post COVID-19 pandemic transit service demand and improves coordinated intra- and intercity public transit services provided by all three transit operators and service connections to other regional transportation networks. PCTPA, through the WPCTSA, will continue coordinate these collective planning efforts that are anticipated to be completed during FY 2024/25.

### **WORK PROGRAM:**

- Work with Roseville Transit, Placer County Transit, Auburn Transit and the WPCTSA program partners and other social service agency and public stakeholder to collectively develop a joint COA/SRTP for the Placer region's transit system **Ongoing**
- Work closely with consultant team, City of Roseville, Placer County, and other pertinent parties to implement the Rapid Link service project **Ongoing**
- Work closely with the City of Roseville, Placer County, City of Auburn, and other stakeholders to implement the app-based Go South Placer On-Demand microtransit pilot program **Ongoing**

**WORK ELEMENT 24 (continued)**  
**TRANSIT PLANNING**

- Provide support for federal and state grant applications for transit capital and operating funding **Ongoing**
- Work with SACOG, Caltrans, the City of Roseville, and Placer County to ensure inclusion of Placer’s Rapid Link service in their planning and funding efforts **Ongoing**

**PRODUCTS:**

- Rapid Link service implementation **Ongoing**
- GO South Placer platform and microtransit service implementation **Ongoing**

<b>REVENUES</b>		<b>EXPENDITURES</b>	
Western Placer CTSA	\$147,987 \$143,107	PCTPA	\$147,487 \$142,607
		Meetings, Travel, and Notifications	500
<b>TOTAL</b>	\$147,987 \$143,107		\$147,987 \$143,107
Percent of budget: <del>2.09%</del> 2.10%			



## **WORK ELEMENT 27**

### **AIRPORT LAND USE COMMISSION/AVIATION PLANNING**

**PURPOSE:** To administer the Placer County Airport Land Use Commission (ALUC), Airport Land Use Comprehensive Plan (ALUCP), and related aviation activities.

**BACKGROUND:** PCTPA’s aviation planning activities include administration of the Airport Land Use Commission (ALUC) and providing technical assistance. Placer County has three public-use airports at Auburn, Lincoln, and Blue Canyon (an emergency airstrip).

PCTPA coordinates with the California Department of Transportation, Division of Aeronautics for ALUC planning activities and funding. As the designated Airport Land Use Commission (ALUC) for Placer County, PCTPA is responsible for defining planning boundaries and setting standards for compatible land uses surrounding airports. ALUCs have two primary functions under State law. The first is the adoption of land use standards that minimize the public’s exposure to safety hazards and excessive levels of noise. The second is to prevent the encroachment of incompatible land uses around public-use airports. This involves review of land use proposals near airports as delineated in the Airport Land Use Compatibility Plan (ALUCP). This analysis, particularly for more complex mandatory reviews, may require the use of consultant services. In addition, a key task for the ALUC is coordinating implementation of the ALUCP with the cities of Auburn and Lincoln and Placer County.

While the Truckee- Tahoe Airport is predominantly in Nevada County, part of the runways and overflight zones are in Placer County. Under agreement reached in 2010, the ALUC designation for the Truckee-Tahoe Airport lies with the Nevada County Transportation Commission (NCTC), augmented by a representative appointed by the Placer County Board of Supervisors so that Placer interests are represented appropriately.

#### **WORK PROGRAM:**

- Participate in interagency aviation meetings **As needed**
- Review development projects for consistency with ALUCP **As needed**
- Provide staff support for ~~aviation agencies, local jurisdictions and~~ ALUC **As needed**
- ~~Administer programs for local jurisdictions~~ **As needed**
- **Complete General Plan consistency with ALUCP for City of Auburn (completed) and Placer County. June 2024**
- Work with SACOG to represent Placer interests in the ALUCP for the McClellan Airport **As needed**
- Annually adjust the ALUC fee structure based on CPI. **July 2023 (completed – no update required)**

**WORK ELEMENT 27 (continued)**  
**AIRPORT LAND USE COMMISSION/AVIATION PLANNING**

**PRODUCTS:**

- Determination of development projects consistency with ALUCP, including public hearings  
**As needed**
- Updated jurisdiction General Plan land use plans/maps, zoning codes, or other planning documents to reflect the updated ALUCP **According to jurisdiction schedule (completion by June 2024)**
- Grant proposals, funding plans, and interagency agreements **As needed**
- ALUC meeting agendas **As needed**
- Annually adjustment of ALUC fee structure **July 2023**

<u>REVENUES</u>		<u>EXPENDITURES</u>	
LTF	\$65,324 \$65,205	PCTPA	\$56,324 \$56,205
ALUC Fees	2,500	Legal	1,000
		Airport Conformity Consultant	\$10,000
		Meetings, Travel, and Notifications	\$500
TOTAL	\$67,824 \$67,705		\$67,824 \$67,705
Percent of budget: <del>96%</del> .99%			

## **WORK ELEMENT 33 BIKEWAY PLANNING**

**PURPOSE:** To provide ongoing bicycle planning, safety education and coordination services.

**BACKGROUND:** In FY 2010/11, PCTPA completed the North Tahoe-Truckee Resort Triangle Bicycle and Trail Plan with the Tahoe Regional Planning Agency (TRPA), Nevada County Transportation Commission (NCTC), and the North Lake Tahoe Resort Association (NLTRA) in support of the NLTRA's goal to become designated as a Bicycle Friendly Community, which has now been achieved. The City of Roseville also achieved a Bicycle Friendly Community status in 2017. In FY 2016/17 and 2017/18, staff led an update to the 2002 Regional Bikeway Plan for the unincorporated communities in western Placer County, which was adopted in June 2019. The Regional Bikeway Plan provided a new vision for bikeways within the rural communities, between incorporated cities, and the touring routes enjoyed by enthusiast with an eye toward identifying projects to compete in the statewide Active Transportation Program.

PCTPA staff continues to coordinate with local agencies on the implementation of the 2019 Regional Bikeway Plan for the unincorporated areas of the county by pursuing grants as well as the local bikeway plans to secure grant funding for feasibility studies and construction. PCTPA will continue to update, print, and distribute the Countywide Bikeway Map as it has annually since 2010. Staff will also continue to monitor bicycle planning and implementation needs, and coordinate with SACOG, Caltrans, and jurisdictions on bicycle issues.

### **WORK PROGRAM:**

- Coordinate efforts with PCTPA's Bicycle Advisory Committee and other stakeholders, including SACOG and Caltrans **Ongoing**
- Coordinate with local jurisdictions on bicycle funding opportunities and grant programs and enhance coordination efforts with Caltrans to identify and program complete streets enhancements to the state highway system in Placer County **Ongoing**
- Coordinate with local jurisdictions, including the City of Folsom, on securing grant funding to complete the Dry Creek Greenway Trail **Ongoing**
- Coordinate with local jurisdictions to develop and secure grant funding for regional bikeway connections to the City of Lincoln and City of Auburn, as identified in the Placer-Sacramento Gateway Plan **Ongoing**
- Participate in the Regional Bicycle Steering Committee and regional marketing efforts of May is Bike Month **February 2024 – May 2024**

**WORK ELEMENT 33 (continued)**  
**BIKEWAY PLANNING**

- Using enhanced computer software capabilities, update countywide bikeway maps in-house **As needed**
- Print and distribute updated countywide bicycle maps **As needed**
- Coordinate efforts with Caltrans District 3 on the implementation of their district 3 Active Transportation Plan **As needed**
- Explore opportunities for acquisition of abandoned railroad rights-of-way for bikeways **As needed**

**PRODUCTS:**

- Bikeway funding applications **As needed**
- Updated Placer Countywide Bikeway Map **As needed**
- Regional Bicycle Steering Committee agendas **As needed**
- Grant applications for projects every two years through the SHOPP complete streets funding **Ongoing**

<b>REVENUES</b>		<b>EXPENDITURES</b>	
LTF	\$9,217 \$9,200	PCTPA	\$5,717 \$5,700
CMAQ	2,000	Meetings, Travel, and Notifications	5,500
TOTAL	\$11,217 \$11,200		\$11,217 \$11,200
Percent of budget: .16%			

## **WORK ELEMENT 35**

### **RAIL PROGRAM**

**PURPOSE:** To support and enhance the success of Capitol Corridor rail service in Placer County, to administer the agency’s passenger rail, freight rail and rail grade crossing programs, and to maximize rail funding available to local jurisdictions.

**BACKGROUND:** PCTPA’s rail program includes rail system planning, program administration and financing, and technical assistance. PCTPA’s top rail priority is intercity rail and therefore is an active member of the Capitol Corridor Joint Powers Authority (CCJPA) and its subcommittees. Intercity rail requires extensive work and coordination with Amtrak, Union Pacific, Caltrans, the CCJPA, and local jurisdictions. PCTPA also provides a critical network of support for the service, working with local jurisdictions and CCJPA staff to provide stations, platforms, connector buses, and other amenities required for the ongoing success of the rail service. The State provides operating funds to CCJPA under the provisions of interagency and fund transfer agreements.

The long-standing focus of Placer’s rail program is to enhance rail service to Placer County. One manifestation of that priority has been work to extend passenger service to Reno. A Reno Rail Conceptual Plan was completed in FY 2004/05, and efforts had been on hold. However in 2021, the Tahoe Mobility Forum raised the possibility of looking at this issue again. Caltrans Division of Rail and Mass Transit (DRMT) will be funding the Sacramento to Reno Service Planning Study. PCTPA worked closely with Caltrans DRMT to perform a first/last mile analysis and a survey of potential user interest in the potential passenger rail service to Tahoe and Reno. Ongoing coordination with partner agencies in the Reno/Tahoe area regarding this issue will continue to occur.

The rail passenger capacity improvement discussion has focused on improvements to the UP rail “bottleneck” between Sacramento and Roseville. In November 2015, the CCJPA adopted the environmental document for the Third Track capacity improvements, with the focus of providing the Capitol Corridor 10 round trips daily to Roseville. The next steps in this effort, to design and construct the Third Track facilities, entails extensive coordination to build agreements with key parties, including CCJPA, PCTPA, UP, and the City of Roseville.

While the footprint of the High Speed Rail line in California is not planned to extend to Placer County, the CCJPA will be acting as a key feeder line. For that reason, PCTPA staff is also working closely with CCJPA to ensure that Placer interests are best served as the High Speed Rail line moves forward.

Finally, PCTPA staff represents Placer County’s jurisdictions before state, federal and regional rail agencies, as well as the CTC. PCTPA also assists jurisdictions with coordination with Caltrans, Union Pacific and the PUC to improve at-grade crossings.

#### **WORK PROGRAM:**

Participate in CCJPA and other interagency rail committees and meetings **Monthly**

- Coordinate with state and federal agencies and legislators to ensure and enhance the long-term viability of rail service in Placer County **Ongoing**

**WORK ELEMENT 35 (continued)**  
**RAIL PROGRAM**

- Serve as information clearinghouse for jurisdictions, tribal governments, and the public regarding rail services and facilities in Placer County **Ongoing**
- Monitor and expedite improvements to rail facilities and services in Placer County, including Third Track project **Ongoing**
- Work with the CCJPA and local transit to provide timely connections to rail service, including changes to Amtrak bus services **Ongoing**
- Coordinate rail and transit programs with other agencies and jurisdictions **Ongoing**
- Work with jurisdictions, CCJPA, and Amtrak to increase train frequencies to Placer stations, including negotiations for agreements with Union Pacific **Ongoing**
- Work with CCJPA to ensure Placer interests are represented in High Speed Rail feeder route planning **Ongoing**
- Work with member agencies, elected officials, and others to pursue operational and funding strategies outlined in the Reno Rail Conceptual Plan **Ongoing**

**PRODUCTS:**

- CCJPA public hearings, meetings, presentations, Annual Business Plan, public service announcements and press releases **Per CCJPA schedule**

<u>REVENUES</u>		<u>EXPENDITURES</u>	
LTF	\$34,309	PCTPA	\$40,809
	\$20,999		\$27,499
CMAQ	7,500	Legal	500
		Meetings, Travel, and Notifications	500
TOTAL	\$41,809		\$41,809
	\$28,499		\$28,499
Percent of budget: .59%	.42%		

## **WORK ELEMENT 40**

### **PLACER PARKWAY (*Multi-year project*)**

**PURPOSE:** To support the completion of the federal and state environmental document that will provide construction level clearance for a future Placer Parkway – a new roadway linking State Route (SR) 70/99 in Sutter County and SR 65 in Placer County.

**BACKGROUND:** The Placer Parkway is cited in the Placer County General Plan, PCTPA’s Regional Transportation Plan, and the SACOG Metropolitan Transportation Plan. The Placer Parkway would offer an alternative travel corridor for the fast growing areas in western Placer County and southern Sutter County.

The Tier 1 environmental document, which identified a 500’ to 1000’ wide corridor for acquisition, was adopted by the South Placer Regional Transportation Authority (SPRTA) in December 2009. The subsequent Tier 2 environmental document effort is being led by Placer County and will analyze design and construction impacts of roadway alignments within the selected corridor.

PCTPA, both as a planning agency and as staff for SPRTA, has led the development of this project since the Placer Parkway Conceptual Plan was started in 1998. As the project moves through the construction level environmental process, the institutional knowledge and background acquired in efforts to date will be needed to assist County staff in moving the project forward. Staff will also be participating as development efforts begin to take shape in the Western Placer area to ensure that the ongoing viability of the Placer Parkway project and that adopted actions and agreements are incorporated into the planning process.

#### **WORK PROGRAM:**

- Evaluate a proposed shift in the identified corridor and provide environmental review of the proposed corridor if necessary. **July 2023 – June 2024**
- Assist Placer County and other partners in developing and obtaining a construction level environmental clearances. **Ongoing**
- Participate with Placer County on Project Development Team (PDT) for Placer Parkway Phase 1 **Per County schedule**
- Work with SACOG, Caltrans, and jurisdictions to ensure inclusion of Placer Parkway in their planning efforts **Ongoing**

#### **PRODUCTS:**

- Tier 1 environmental document revision (addendum, subsequent or supplemental) **July 2023 – June 2024, if needed**

**WORK ELEMENT 40 (continued)**  
**PLACER PARKWAY (Multi-year project)**

<u>REVENUES</u>		<u>EXPENDITURES</u>	
SPRTA Mitigation Fees	\$17,550	PCTPA	\$15,050
	\$17,510		\$15,010
		Legal	2,000
		Meetings, Travel, and Notifications	500
TOTAL	\$17,550		\$17,550
	\$17,510		\$17,510
Percent of budget: <del>25%</del> .26%			



## WORK ELEMENT 41

### I-80/SR 65 INTERCHANGE IMPROVEMENTS (*Multi-year project*)

**PURPOSE:** To develop a shelf-ready phased improvement program for the I-80/SR 65 Interchange, including environmental clearances, design, and right-of-way. Caltrans pays for and provides staff support through Expenditure Authorization 03-0H26U.

**BACKGROUND:** The I-80/SR 65 Interchange was constructed in the mid-1980's as part of the Roseville Bypass project on SR 65 in the Roseville/Rocklin area of South Placer County. The facility is now experiencing operational problems caused by high peak traffic volumes and less efficient geometry of the loop ramp, which cause downstream backups on I-80 and SR 65.

A project initiation document (PID) for the I-80/SR 65 Interchange Improvements was completed in 2009 by Caltrans District 3. This document provided planning level alignment alternatives, as well as scope, schedule, and cost estimates. The interchange improvements received both federal and state environmental clearance in September 2016.

Phase 1 of the I-80/SR 65 interchange completed construction in September 2019, including a third lane on northbound Highway 65 from Interstate 80 to Pleasant Grove Boulevard. Caltrans continues to pursue resolution of construction related claims so the project has not been closed out.

The work for FY 2023/24 is expected to 1) focus on coordination with Caltrans to close out construction of the first phase (Phase 1) of the interchange on northbound SR 65 from I-80 to Pleasant Grove Boulevard, as well as 2) complete a Feasibility Study for [medium and heavy duty truck charging alternative fueling](#) at the interchange in order to make to project more competitive for grant funding, and 3) start a Value Engineering [and Construction Phasing](#) analysis to investigate cost saving opportunities for the construction project.

#### WORK PROGRAM:

- Work closely with Caltrans, jurisdictions, regulatory agencies, and other pertinent parties to close out construction of Phase 1 of the I-80/SR 65 interchange in accordance with the work program **July 2023 – June 2024 (Completed)**
- [Coordinate with Caltrans on continued environmental monitoring of the Phase 1 project. - Ongoing](#)
- Provide information and make presentations on the I-80/SR 65 Interchange Improvement effort to elected officials, business groups, citizen groups, and other interested parties **July 2023 – June 2024/as needed**
- Maintain and update the project [information on the PCTPA](#) website [www.8065interchange.org](http://www.8065interchange.org) **Ongoing**
- Work with SACOG, Caltrans, and jurisdictions to ensure inclusion of I-80/SR 65 Interchange Improvements in their planning efforts **Ongoing**
- Complete Feasibility Study for [medium and heavy duty truck charging alternative fueling](#) at the interchange. **July 2023 – June 2024**
- Pursue grant funding opportunities for construction of Phase 2. **As needed**

**WORK ELEMENT 41 (continued)**  
**I-80/SR 65 INTERCHANGE IMPROVEMENTS**

- Perform a ~~Value Engineering Construction Phasing~~ analysis of the interchange project. **July September 2023 – June 2024**

**PRODUCTS:**

- Coordination with Caltrans and regulatory agencies to settle construction claims ~~and close out environmental monitoring~~ for Phase 1 construction **Ongoing Completed**
- ~~Coordination with Caltrans and regulatory agencies to close out environmental monitoring for Phase 1 construction~~ **Ongoing**
- Engineering study for ~~medium and heavy duty~~ truck ~~charging~~ **alternative fueling** at the interchange. **July 2024**
- ~~Value Engineering Construction Phasing~~ analysis. **July 2024**

<u>REVENUES</u>		<u>EXPENDITURES</u>	
SPRTA Mitigation Fees	\$411,744 \$408,236	PCTPA	\$99,244 \$95,736
		Consulting	310,000
		Legal	2,000
		Meetings, Travel, and Notifications	500
TOTAL	\$411,744 \$408,236		\$411,744 \$408,236
Percent of budget: 5.81% 6.00%			

## **WORK ELEMENT 42**

### **HIGHWAY 65 WIDENING** *(Multi-year project)*

**PURPOSE:** To develop a shelf-ready improvement program for Highway 65 between I-80 and Lincoln Boulevard, including environmental clearance, design, and right-of-way. Caltrans pays for and provides staff support through Expenditure Authorization 03-1FI71.

**BACKGROUND:** Highway 65 between Roseville and Marysville was designated as part of the state's highway system in the 1960's. The Highway 65 Roseville Bypass, constructed in the late 1980's, realigned the highway through downtown Roseville from Washington Boulevard to I-80. The facility is now experiencing operational problems caused by high peak traffic volumes, which cause backups on both northbound and southbound Highway 65 in South Placer County.

A project initiation document (PID) for the Highway 65 Widening was completed by Caltrans District 3 in January 2013. This document provides planning level alternatives, as well as scope, schedule, and cost estimates. The PCTPA board approved funding to complete Project Approval and Environmental Document (PA&ED) phase, which was completed in FY 2017/18. The PA&ED included a commitment to analyze the feasibility of extending passenger rail service to Lincoln.

The next phase of the project is the design of Phase 1 improvements from Blue Oaks Boulevard to Galleria Blvd/Stanford Ranch Rd, which is being led by PCTPA. The work in FY 2020/21 continued the Phase 1 work to 95 percent design in September 2021. However, with the transportation funding strategy being delayed to 2024, the design will remain on hold until construction funding can be identified.

#### **WORK PROGRAM:**

- Provide information and make presentations on the Highway 65 Widening effort to elected officials, business groups, citizen groups, and other interested parties **July 2023 – June 2024/as needed**
- Work with SACOG, Caltrans, and jurisdictions to ensure inclusion of the Highway 65 Widening in their planning efforts **Ongoing**
- Complete the feasibility study for the extension of passenger rail service to Lincoln **August 2023 (Completed)**
- Consider design modifications necessary to align with grant funding opportunities **July 2023 – June 2024**
- Pursue grant funding opportunities for construction of Phase 1 **As needed**
- [Perform a Construction Phasing analysis of the corridor projects. September 2023 – June 2024](#)

#### **PRODUCTS:**

- Grant funding applications **As needed**
- Engineering study of design modifications to align with grant funding opportunities **December 2023**

**WORK ELEMENT 42 (continued)**  
**HIGHWAY 65 WIDENING (Multi-year project)**

- Feasibility study for the extension of passenger rail service to Lincoln **August 2023**
- Newsletters, press releases, and outreach materials **Ongoing**
- Construction Phasing analysis. **July 2024**

<b>REVENUES</b>		<b>EXPENDITURES</b>	
SPRTA	\$283,645 \$271,584	PCTPA	\$81,345 \$69,284
		Consulting	200,000
		Permit Fees	1,800
		Meetings, Travel, and Notifications	500
<b>TOTAL</b>	\$283,645 \$271,584		\$283,645 \$271,584
Percent of budget: 4.00%			
3.99%			

## **WORK ELEMENT 43**

### **I-80 AUXILIARY LANES (*Multi-year project*)**

**PURPOSE:** Monitor construction of the I-80 Auxiliary Lanes project.

**BACKGROUND:** The PCTPA Board in August 2013 re-allocated federal earmark savings from the I-80 Bottleneck project for environmental approval of the following improvements:

- I-80 Eastbound Auxiliary Lane between SR 65 and Rocklin Road
- I-80 Westbound 5<sup>th</sup> Lane between Douglas Blvd and Riverside Ave

Construction of the I-80 Auxiliary Lanes project will relieve existing traffic congestion and support future economic development in southern Placer County. The two locations have been combined as one project to be the most cost effective in completing the environmental documents and project designs.

A project initiation document (PID) was completed by Caltrans for each location in 2000 and 2012. PCTPA completed the Project Approval and Environmental Documents (PA&ED) phase in May 2014, and both state and federal environmental approval for the project was obtained in October 2016. Final design and right of way acquisition phases were initiated in February 2018. Construction funding was awarded by the CTC in December 2020. Construction [started in August 2023](#). ~~Is anticipated to start in late Spring 2023.~~

The work for FY 2023/24 is expected to include construction support activities, implementation of mitigation and permit requirements, permit renewals, and PG&E PUE abandonment.

#### **WORK PROGRAM:**

- Work with SACOG, Caltrans, SPRTA, and jurisdictions to address any I-80 Auxiliary Lanes construction issues. **July 2023-June 2024**
- Work closely with consultant team, jurisdictions, Caltrans, regulatory agencies, and other pertinent parties to monitor project construction activities, and implementation of project mitigation and permit requirements. **July 2023 – June 2024**
- Develop consultant contract amendment for project construction support. **July 2023**  
[Completed](#)
- Provide project construction support **July 2023 – June 2024**
- With the consultant team, provide information and make presentations on the I-80 Auxiliary Lanes effort to elected officials, area business groups, area homeowners, citizen groups, and other interested parties **As needed**

**WORK ELEMENT 43 (continued)**  
**I-80 AUXILIARY LANES (Multi-year project)**

**PRODUCTS:**

- I-80 Auxiliary Lanes construction support. **July 2023 – June 2024**
  - Consultant contract amendments for project construction support **July 2023 Completed**
  - Implementation of mitigation and permit requirements; and permit renewals. **July 2023 – June 2024 Completed**
- Newsletters, press releases, and outreach materials **Ongoing**

<b>REVENUES</b>		<b>EXPENDITURES</b>	
HIP Funds	183,725	PCTPA	\$108,410
	<i>Expended in prior year</i>		\$108,009
SPRTA	<del>330,234</del>	Consultant Construction	\$171,765
	\$299,474	Engineering Support	
		Meetings, Travel, and Notifications	\$1,000
		Permit Fee Renewals: RWQCB & Roseville Tree	\$5,600
		Legal	\$7,500
		PG&E PUE Abandonment (processed thru Roseville)	\$5,600
		PG&E Gas Pipeline Relocation Cost Overrun	214,084
			<i>Prior year expense</i>
TOTAL	\$ <del>513,959</del>		\$513,959
	\$299,474		\$299,474
Percent of budget:			
<del>7.25%</del> 4.40%			

## **WORK ELEMENT 44**

### **SR 49 SIDEWALK GAP CLOSURE (*Multi-year project*)**

**PURPOSE:** To implement the Active Transportation Program Cycle 4 (2018) funded Highway 49 Sidewalk Gap Closure project. The project will construct 2.8 miles of sidewalks between gap on State Route 49 (SR 49) from I-80 to Dry Creek Road, including environmental clearances, design, and right of way support. Caltrans pays for and provides staff support through Expenditure Authorization 03-3H830.

**BACKGROUND:** The PCTPA Board in March 2017 allocated federal Congestion Mitigation and Air Quality funding to work cooperatively with the City of Auburn, County of Placer, and Caltrans to develop a standalone project to close gaps in the sidewalk network along SR 49 from I-80 to Dry Creek Road. Caltrans developed the SR 49 Roadway Rehabilitation project that proposes to repave the entire corridor, add Class II bicycle lanes, and sidewalks along certain segments of the corridor. A Project Report for the Roadway Rehabilitation project was approved March 2017. Unfortunately, sufficient funding was unavailable to provide continuous sidewalks along the corridor and Caltrans Roadway Rehabilitation project was too far along in the process to add the sidewalk gap closure components without significantly slowing their process.

The standalone Highway 49 Sidewalk Gap Closures project completed the necessary environmental clearance in December 2019. Continued effort to complete the design, and right of way phases will support construction of the project using a \$14.4 million Active Transportation Program (ATP) state grant.

During FY 2022/23, PCTPA and the consultant team finalized the Plans Specifications & Estimates (PS&E), and completed the right-of-way engineering phases.

Work for FY23/24 includes supporting Caltrans to prepare and release a bid package for construction, and monitoring construction and providing design support for construction as needed..

#### **WORK PROGRAM:**

- Work closely with consultant team, jurisdictions, regulatory agencies, and other pertinent parties to support Caltrans' advertisement and award of the construction contract **July 2023 – November-June 2024**
- Monitor construction activities and review cost changes **July 2023 – June 2024**
- Provide design engineering support to Caltrans to support construction activities **As needed**
- With the consultant team, provide information and make presentations on the Highway 49 Sidewalk Gap Closures effort to elected officials, business groups, citizen groups, and other interested parties **As Needed**

**WORK ELEMENT 44 (continued)**  
**SR 49 SIDEWALK GAP CLOSURE (Multi-year project)**

**PRODUCTS:**

- Consultant assistance with construction bid package **July - August 2023**
- Consultant engineer responses to Caltrans construction inquiries **As needed**
- Consultant contract amendments **As needed**
- Newsletters, press releases, and outreach materials **Ongoing**

<b>REVENUES</b>		<b>EXPENDITURES</b>	
ATP	\$1,180,000	PCTPA	\$70,444 \$70,674
LTF, Bike and Ped	197,164 194,500	Design consultant	\$380,000 \$180,000
CMAQ/HIP	180,000 1,162,894	ROW Capital: Easements and Utility Relocations	\$900,000
		Mitigation/Permit Fees	\$48,220
		Meetings, Travel, and Notifications	\$1,000
		Caltrans – Advertise, Award, Administer Contract	\$150,000
		Legal	\$7,500
TOTAL	\$1,577,164 \$1,357,394		\$1,577,164 \$1,357,394
Percent of budget: 21.96% 19.93%			



## **WORK ELEMENT 47**

### **SOUTH PLACER-SOUTH SUTTER TRANSPORTATION FAIR SHARE ANALYSIS** *(Multi-year project)*

**PURPOSE:** Facilitate a proactive multi-jurisdictional approach between the Participating Agencies and PCTPA to address cumulative transportation impacts from pending and approved land development within the South Placer and Sutter region.

#### **BACKGROUND:**

Placer and Sutter counties entered into a mutual settlement agreement in June 2009 relating to the Placer Vineyard and Sutter Pointe Specific Plans. In this agreement, Placer and Sutter counties agreed to establish a program of credits and reimbursements consistent with fair share mitigation requirements for its out-of-jurisdiction traffic impacts, and its impacts on federal and State freeways and highways from the specific plans being developed within each respective County.

Beginning in January 2020, staff from the City of Roseville and Placer and Sutter counties and PCTPA formed a Project Development Team (PDT) to initiate a Project Study Report (PSR) to scope Riego Road/Baseline Road improvements from SR 99 to Foothills Boulevard. In conjunction with the PDT, a Strategy Team was formed, consisting of corridor development interests. The PSR, approved in October 2020, indicated that Riego Road/Baseline Road needs to be widened and improved to support future planned and approved development, and to provide for a reliable and safe east-west connection to meet anticipated traffic demands in the South Placer and South Sutter region.

At the conclusion of the PSR, the PDT recognized that it would be in their best interest to continue to work cooperatively to design, fund, finance, and determine the timing of construction of Riego Road/Baseline Road improvements located in their respective jurisdictions. The PDT also recognized that it would be in their best interest to work cooperatively to obtain State and federal transportation funding, and to develop a fair and equitable method to fund and finance costs of certain regional transportation improvements necessary to address cumulative traffic impacts within the South Placer and South Sutter region. As a result, a Memorandum of Understanding (MOU) executed in October 2020 between the four agencies that directed PCTPA to facilitate a mutually agreed upon scope and structure for a regional transportation funding and financing plan. An RFP for consultant services to conduct the transportation fair share analysis was released in October 2022. The PCTPA Board approved an amended MOU in January 2023, which authorized and directed PCTPA to award a consultant contract to prepare the transportation fair share analysis for South Placer-South Sutter region in 2023.

#### **WORK PROGRAM:**

- Complete the fair share analysis – **July 2023 – March 2024**
- Execute as needed project contingency funding and consultant optional tasks upon approval of Project Development Team. **July 2023 – June 2024**

**WORK ELEMENT 47 (continued)**  
**SOUTH PLACER-SOUTH SUTTER TRANSPORTATION FAIR SHARE ANALYSIS**  
**(Multi-year project)**

- With the consultant team, provide information and make presentations to elected officials, business groups, citizen groups, and other interested parties **July 2023 – March 2024**
- Work with SACOG, Caltrans, and jurisdictions to ensure inclusion of Riego Road/Baseline Road Widening and other South Placer-South Sutter regional projects in their planning efforts **Ongoing**

**PRODUCTS:**

- Fair share analysis options evaluation including Riego Road/Baseline Road Widening. Consultant work product. **In accordance with work program**
- Optional consultant services **As needed**
- 
- Memorandum of Understanding Amendment between partner agencies and PCTPA for Task 3 services **To be determined**
- Newsletters, press releases, and outreach materials **Ongoing**

<b>REVENUES</b>		<b>EXPENDITURES</b>	
Agency Contribution	\$390,040 \$390,456	PCTPA	\$130,334 \$130,747
		Consultant	\$146,667
		Consultant Optional Services Year One (multi-year)	\$13,333
		Project Contingency	\$99,709
<b>TOTAL</b>	\$390,040 \$390,456		\$390,040 \$390,456
Percent of budget: <del>5.50%</del> 5.73%			

## **WORK ELEMENT 48**

### **PLACER COUNTYWIDE ACTIVE TRANSPORTATION PLAN (Multi-year project)**

**PURPOSE:** Develop a countywide active transportation plan for bicycle and pedestrian projects in Auburn, Colfax, Lincoln, Loomis, Rocklin, and unincorporated Placer County. Project is funded primarily by a Caltrans Sustainable Communities grant.

**BACKGROUND:** In August 2023, PCTPA was awarded a Caltrans Sustainable Communities grant in the amount of \$424,293 to develop the Placer Countywide Active Transportation Plan (PATP). This plan will develop a vision for active transportation (bicycling and walking) in Placer County by working with five of the county's cities/town, as well as the County of Placer, to analyze demand for active transportation, engage with the community (with an emphasis on underserved communities), and develop projects. The Cities of Auburn, Colfax, Lincoln, and Rocklin; Town of Loomis; and the County of Placer will participate in this planning process. The City of Roseville is conducting their own Active Transportation Plan update concurrent to this effort. PCTPA and Roseville staff will work closely together to ensure the visions of the two plans are aligned.

This work element will include all activities related to the development of the PATP, including (but not limited to): grant administration, consultant selection and award, community engagement, data analysis, jurisdictional and stakeholder coordination, and the development of projects. Activities anticipated to be worked on in FY 23/24 are listed below in the Work Program section.

#### **WORK PROGRAM (CURRENT FISCAL YEAR 2023/24):**

- Hold grant kick-off meeting with Caltrans staff **September 2023** (PCTPA)
- Release a competitive Request for Proposals to select a consultant **November 2023 – January 2024** (PCTPA)
- Hold a kick-off meeting with consultant and Caltrans **February 2024** (PCTPA & Consultant)
- Document existing conditions, conduct a literature review, and collect data **February 2024 – April 2024** (Consultant & PCTPA)
- Update the Placer Countywide Bicycle Map **February 2024 – April 2024** (Consultant & PCTPA)
- Develop Plan Goals and Objectives **February 2024 – April 2024** (Consultant & PCTPA)
- Convene a Plan Development Team of stakeholders, likely meeting once per month **March 2024 – June 2024** (PCTPA & Consultant)
- Develop a community engagement plan **May 2024** (Consultant)
- Begin a community engagement campaign to solicit concerns about bicycling and walking in Placer County, including online surveys, virtual workshops, governing board presentations, community based organizations outreach, and pop-up events **June 2024 (continues into FY 24/25)** (Consultant & PCTPA)
- Grant reporting and invoicing **Monthly and as needed** (PCTPA)

**WORK ELEMENT 48 (continued)**

**PLACER COUNTYWIDE ACTIVE TRANSPORTATION PLAN (Multi-year project)**

**PRODUCTS FOR FY 2023/24:**

- Request for Proposals procurement package and contract with selected consultant November 2023 – January 2024
- Technical memos and maps on existing active transportation conditions in Placer County February 2024 – April 2024
- Updated 2023 Placer County Bike Map April 2024
- PATP Goals and Objectives April 2024
- Community Engagement Plan, Outreach Materials, and Outreach activities May 2024 – June 2024
- Consultant contract amendments As needed
- Newsletters, press releases, social media posts, and outreach materials Ongoing

**FY 2023/24**

<u>REVENUES</u>		<u>EXPENDITURES</u>	
<u>Caltrans Sustainable Communities Grant</u>	<u>\$146,019</u>	<u>PCTPA</u>	<u>\$36,311</u>
<u>LTF</u>	<u>\$18,918</u>	<u>Consultant Services</u>	<u>\$127,626</u>
		<u>Meetings, Travel, and Notifications</u>	<u>\$1,000</u>
<u>TOTAL</u>	<u>\$164,937</u>		<u>\$164,937</u>

**FUTURE FISCAL YEARS**

**FY 2024/25**

<u>REVENUES</u>		<u>EXPENDITURES</u>	
<u>Caltrans Sustainable Communities Grant</u>	<u>\$233,145</u>	<u>PCTPA</u>	<u>\$50,872</u>
<u>LTF</u>	<u>\$30,207</u>	<u>Consultant Services</u>	<u>\$210,480</u>
		<u>Meetings, Travel, and Notifications</u>	<u>\$2,000</u>
<u>TOTAL</u>	<u>\$263,352</u>		<u>\$263,352</u>

**WORK ELEMENT 48 (continued)**

**PLACER COUNTYWIDE ACTIVE TRANSPORTATION PLAN (Multi-year project)**

**FY 2025/26**

<u>REVENUES</u>		<u>EXPENDITURES</u>	
<u>Caltrans Sustainable Communities Grant</u>	<u>\$45,129</u>	<u>PCTPA</u>	<u>\$18,032</u>
<u>LTF</u>	<u>\$5,847</u>	<u>Consultant Services</u>	<u>\$31,944</u>
		<u>Meetings, Travel, and Notifications</u>	<u>\$1,000</u>
<u>TOTAL</u>	<u>\$50,976</u>		<u>\$50,976</u>

**Total**

<u>REVENUES</u>		<u>EXPENDITURES</u>	
<u>Caltrans Sustainable Communities Grant</u>	<u>\$424,293</u>	<u>PCTPA</u>	<u>\$105,215</u>
<u>LTF</u>	<u>\$54,972</u>	<u>Consultant Services</u>	<u>\$370,050</u>
		<u>Meetings, Travel, and Notifications</u>	<u>\$4,000</u>
<u>TOTAL</u>	<u>\$479,265</u>		<u>\$479,265</u>

## **WORK ELEMENT 50**

### **PROJECT PROGRAMMING AND REPORTING**

**PURPOSE:** To maximize the funding available to priority transportation projects and programs through accurate and efficient programming of Federal and State transportation dollars, ensure timely delivery, and report the success of those efforts.

**BACKGROUND:** PCTPA develops and programs transportation projects that are funded with State and Federal funds. PCTPA staff coordinates with Caltrans, SACOG, and other agencies, as indicated, regarding the various funding programs. Staff also coordinates with local jurisdictions to develop needed projects to meet specific program guidelines.

Following the passage of SB 862 in 2014, PCTPA determines the allocation of Low Carbon Transit Operations Program (LCTOP) funding to the region's eligible transit and transportation projects. LCTOP funding is continuously appropriated from the annual auction proceeds in the State's Greenhouse Gas Reduction Fund to help the State achieve its climate goals.

The passage of SB 1 in the Spring of 2017 brought significant new revenues into play, with critical administrative roles for Regional Transportation Planning Agencies (RTPAs). The package of ten different funding programs includes a few that are distributed by formula, with most distributed on a competitive basis. PCTPA works with member jurisdictions and other regional agencies to ensure timely use of formula SB1 funds, and to identify projects and develop applications for competitive SB1 funds. These programs include regular reporting to Caltrans and the California Transportation Commission (CTC) that PCTPA and its member jurisdictions must comply with.

Another major transportation funding program that PCTPA programs, under the requirements of our designation as Placer's Regional Transportation Planning Agency (RTPA), is the Regional Transportation Improvement Program (RTIP). PCTPA determines how to program the RTIP funds allocated to the county. PCTPA also advocates for the allocation of Caltrans' ITIP funds for shared priorities on state highways, including SR 65, SR 49, and I-80. While in recent years, with the advance of Placer's share of RTIP funds for the SR 65 Lincoln Bypass, as well as the fluctuations that result in a diminishing effectiveness of the gas tax revenues that fund the STIP, this is becoming a much smaller portion of PCTPA's funding efforts. However, with the passage of SB 1, it appears the RTIP debt may be paid off sooner, likely bringing this funding source back into play in the 2028 STIP Cycle.

Federal funding is equally volatile. Over the past decade, the shrinking cost effectiveness of the Federal gas tax has required more state and local funding to make ends meet. A very positive boost to Federal funding levels occurred in November 2021, with the passage of the Infrastructure Investment and Jobs Act (IIJA). IIJA effectively replaces the FAST Act and provides a new, five-year authorization of surface transportation funding for highways, transit, and rail programs with an approximately 56% increase in this funding source alone compared to the previous FAST Act legislation. Overall, IIJA introduces \$550 billion of new funding

**WORK ELEMENT 50 (continued)**  
**PROJECT PROGRAMMING AND REPORTING**

opportunities above the current baseline Federal funding programs, with significant funding increases targeted to new competitive grant programs. Staff will continue to monitor changes to existing, and the introduction of new, funding programs in the IIJA, and will be coordinating with PCTPA’s member jurisdictions to continue to obtain and maintain the maximum amount of transportation funding for our local and regional transportation priorities, including transit improvements, Highway 65 widening, the I-80/SR 65 Interchange, SR 49 Sidewalk Gap Closures, Placer Parkway, rail capacity improvements, and various I-80 improvements. Not only do these projects enhance mobility for residents, they also enhance and expand efficient local, regional, and – in the case of I-80 and rail, national goods movement.

[SB 125 establishes the Zero-Emission Transit Capital Program \(ZETCP\) program and provides for formula allocation to PCTPA of both ZETCP and Transit and Intercity Rail Capital Program \(TIRCP\) formula funds. The ZETCP funds are available for fiscal years 2023/24 through 2026/27. TIRCP formula funds are available for fiscal years 2023/24 through 2024/25. PCTPA is responsible for various programming, accountability and transit performance reporting responsibilities related to these funds. PCTPA will work with local agencies to allocate and administer these funds according to available funding program guidance.](#)

PCTPA also works with SACOG and local agencies to program projects for Federal programs such as the Congestion Mitigation and Air Quality (CMAQ) and Surface Transportation Block Grant (STBG) programs, the Federal Transit Administration (FTA) Section 5311, as well as coordinating applications for State and regional programs like the Active Transportation Program (ATP) and FTA Section 5310 program administered by SACOG (urban) and the State (rural).

All regionally significant transportation projects, as well as any which receive federal funding, must be included in the Metropolitan Transportation Improvement Program (MTIP) to allow projects to move forward. PCTPA works closely with SACOG and our jurisdictions to ensure data included in the MTIP is current and accurate. In addition, SACOG provides air quality conformity determinations on the MTIP to comply with Federal clean air requirements.

Under AB 1012, agencies are also held responsible for ensuring State and Federal funding is spent promptly and projects delivered within specified time limits. This requirement is backed up by “use it or lose it” timely use of funds deadlines. Some of the major projects subject to these provisions are those receiving funding through the STBG and CMAQ programs.

Over and above these requirements, PCTPA has a long-standing commitment to ensuring that every transportation dollar is used as quickly, efficiently, and effectively as is possible. PCTPA staff will continuously monitor the progress of projects funded through State and Federal sources and ensure that they meet scope, schedule, and budget.

**WORK ELEMENT 50 (continued)**  
**PROJECT PROGRAMMING AND REPORTING**

**WORK PROGRAM:**

- Monitor and update information on regionally significant projects to SACOG for inclusion in the MTIP **Ongoing**
- Prepare grant and funding applications, including State SCCP, TCEP, LPP, and ATP; and Federal RAISE grants **Per Federal/State schedules**
- Serve as information clearinghouse for various grant programs **Ongoing**
- Provide staff support and advice for local jurisdictions in developing grant applications **Ongoing**
- Work with Placer County Air Pollution Control District and SACOG to integrate AB2766, SECAT, and/or CMAQ funding program for NOx reduction projects to enable the region to meet air quality conformity requirements for programming **Ongoing**
- Analyze STBG and CMAQ applications and assist with programming funding with SACOG per Memorandum of Understanding **As needed**
- Coordinate with jurisdictions to develop and submit effective Active Transportation Program (ATP) applications **Ongoing**
- Participate with CTC and SACOG to analyze and recommend grant funding for ATP projects **Per State and SACOG schedules**
- Update CMAQ, STBG, or other programming to meet timely use of funds rules **As needed**
- Coordinate with SACOG on federal funding program opportunities and requirements, including participating in the SACOG Regional Funding Round Working Group **As needed**
- Closely coordinate with Caltrans as they develop the list of Placer projects for which Project Initiation Documents (PIDs) will be done, as part of Caltrans' Three Year Strategic Plan **According to Caltrans schedule**
- Prepare and process Low Carbon Transit Operations Program (LCTOP) funding applications and allocate LCTOP apportionments for the Placer region **According to Caltrans Schedule**
- Prepare amendments to the State Transportation Improvement Program (STIP) for Placer projects and programs **As needed**
- Prepare reporting documents and status reports for grant and funding programs **According to funding agency requirements**
- Organize and/or attend technical and management meetings for projects, such as Project Development Team (PDT), and Management Team meetings **Quarterly / As needed**
- Prepare and submit required progress reporting documents for grant programs **As required**
- Provide project sponsors with data regarding State and Federal policies that may impact implementation **Ongoing**
- Actively pursue innovative approaches to advancing project schedules and otherwise speed implementation **Ongoing**
- Actively pursue innovative approaches to project development processes to reduce costs **Ongoing**
- Provide ongoing review of project status to assure all timelines and requirements are met **Ongoing**
- Work with project sponsors to generate accurate and timely data for distribution to other agencies, community groups, and the general public **Ongoing**



**WORK ELEMENT 50 (continued)**  
**PROJECT PROGRAMMING AND REPORTING**

- Work with local, State, and Federal officials to obtain additional funding when needed to construct needed transportation projects **Ongoing**
- Participate in efforts to develop guidelines and requirements for new funding programs under SB 1 **Ongoing per Caltrans/CTC program funding schedules**
- In coordination with member jurisdictions, Caltrans, and/or SACOG, develop application for SB 1 grant programs, including Trade Corridors Enhancement Program (TCEP) and Solutions for Congested Corridors Program (SCCP) **Ongoing per Caltrans/CTC schedules**
- Gather data and complete reporting requirements for SB 1 funding programs **Ongoing per Caltrans/CTC schedules**
- Coordinate with Caltrans on the Highway 49 Safety Audit Review and Implementation with Caltrans **Ongoing per Caltrans schedule**
- Program and assist with the administration of LCTOP funding allocated for eligible transportation projects in Placer County **Ongoing**
- [Work with eligible local agencies to allocate and program TIRCP and ZETCP funding. Submit transit operators' performance data, along with various accounting and reporting requirements established under the SB 125 program guidelines. September 2023-June 2024](#)
  
- SACOG MTIP Updates **Quarterly/as needed**
- SACOG Air Quality Conformity Determinations on MTIP **In accordance with MTIP updates**
- Annual programming, amendments and applications to Low Carbon Transit Operations Program **March 2024/As needed**
- Amendments and applications to State of Good Repair Program **As needed**
- Coordinate with agencies on supporting FTA Section 5310 projects and funding applications **As needed, per Caltrans schedule**
- FTA Section 5311 Program of Projects and assistance with applications **April 2024**
- FTA Section 5304/SHA Sustainable Communities Grant application **March 2024**
- State Transportation Improvement Program (STIP) amendments **As needed**
- Other grant and fund program applications, including ATP **As needed**
- Provision of grant applications and reports to local agencies and the general public **Ongoing**
- Cooperative Agreements with Caltrans for the programming of funds **As needed**
- Project listings on Caltrans' Three Year Strategic Plan for PIDs **Per Caltrans determination**
- PDT and Management Team agendas **In accordance with project schedules**
- Project and funding status reports, including SB 45 **Quarterly**
- Progress reports on grant funding programs **As required**
- Caltrans Fund Transfer Agreements **As needed**
- Project signage that highlights local agency participation **As needed**
- Cooperative Agreements, Memoranda of Understanding, and other agreements **As needed**
- Transportation facility improvements **In accordance with project schedules**

**WORK ELEMENT 50 (continued)**  
**PROJECT PROGRAMMING AND REPORTING**

- SB 1 grant application for Trade Corridors Enhancement Program (TCEP) and Solutions for Congested Corridors Program (SCCP) **Per Caltrans/CTC schedules**
- Programming and monitoring delivery of CMAQ and STBG projects selected for funding **As needed / Ongoing**
- SB 1 program reports **Per Caltrans/CTC schedules**
- TIRCP and ZETCP programming allocation requests, transit operator performance reports, and accompanying financial accounting and program reporting documents. As required per CalSTA schedules.
- Grant application for a countywide electric vehicle charging infrastructure planning grant Per SACOG's grant schedule

<b>REVENUES</b>		<b>EXPENDITURES</b>	
LTF	\$51,534 \$2,068	PCTPA	\$89,534 \$115,068
<u>ZETCP</u>	<u>\$75,000</u>	Consultant: Grant Writer	\$25,000
STIP Programming (PPM)	\$64,000	Meetings, Travel, and Notifications	1,000
TOTAL	\$115,534 \$141,068		\$115,534 \$141,068
Percent of budget:			
<del>1.63%</del> <u>2.07%</u>			

## **WORK ELEMENT 61 REGIONAL TRANSPORTATION FUNDING PROGRAM**

**PURPOSE:** To educate the public on the need for critical regional transportation projects in Placer County.

**BACKGROUND:** For a number of years, the needs for large scale regional transportation projects far outstrip the county's available transportation funding. Concern has centered on not only the shortfalls, but the timing to fund major projects identified in the Regional Transportation Plan (RTP) such as the Placer Parkway, Highway 65 Widening, the I-80/SR 65 Interchange, intercity rail, transit services, road rehabilitation and maintenance, and pedestrian and bicycle facilities.

While the regional traffic impact fee has now been adopted, increasing travel demand juxtaposed with the state and federal government contributing less towards major freeway and highway projects have continued the gap between transportation needs and funding availability. Unfortunately, the disparity between critical transportation needs and funding opportunities, and the integral ties to the economic vitality of Placer County has not changed. Meanwhile, the very legitimate public concerns about traffic congestion and pavement conditions are getting even worse.

Covid-19 variants in Fiscal Year 2021-2022 presented a major challenge to our work program. Support for the need for a funding mechanism remains steady but has not returned to 2019 levels of support near the 2/3 needed for a special tax. Our charge is to regroup and redouble our efforts to provide the public with more information about the planning and funding challenges involved in addressing our critical transportation needs. Enhanced and creative efforts to provide that kind of outreach and information is a key to the success of our Regional Transportation Funding Program efforts moving forward.

### **WORK PROGRAM:**

- Continue to monitor traffic volumes, monitor economic conditions, and update/refine the Regional Transportation Funding Outreach Program. **July 2023 – June 2024**
- Develop and provide informational materials, social media posts, videos and fact sheets on transportation needs and funding to interested parties, including community and business groups, and the general public. **Ongoing**
- Continue to identify opportunities to leverage state and federal dollars to enhance local transportation funding efforts. **Ongoing**
- Investigate opportunities for innovative funding, such as bonding and public-private partnership for specialized transit services, Placer Parkway, I-80 improvements, and other potential candidate projects. **Ongoing**
- [Perform a Construction Phasing analysis of the -80/SR65 Interchange and SR65 Widening Projects. September 2023 – June 2024](#)

### **PRODUCTS:**

Informational materials, including fact sheets, maps, charts, website graphics, videos, social media, streaming media, traffic cameras and PowerPoint presentations, on transportation needs and funding **July 2023-June 2024**

**WORK ELEMENT 61 (continued)**  
**REGIONAL TRANSPORTATION FUNDING PROGRAM**

- Agendas for meetings/presentations with stakeholders, community groups, and others **Ongoing**
- Updated Sales Tax Revenue Projections **July - August 2023.**
- [Construction Phasing Study for the I-80/SR65 Interchange and SR65 Widening Projects June 2024](#)

<b>REVENUES</b>		<b>EXPENDITURES</b>	
LTF	\$594,476	PCTPA	\$245,890
	\$561,937		\$213,351
LTF Contribution from South County Agencies	400,000	Legal	10,000
WE61 Specific Carryover		Outreach Consultant/Direct Costs / Events / Printing	537,753
		Bond Consultant	100,000
		Polling Consultant	93,833
		Metroquest	7,000
<b>TOTAL</b>	\$994,476		\$994,476
	\$961,937		\$961,937
Percent of budget:			
14.02% 14.13%			

## **WORK ELEMENT 80 FREEWAY SERVICE PATROL (FSP)**

**PURPOSE:** To facilitate implementation of a Freeway Service Patrol (FSP) on I-80 and SR 65 in South Placer County.

**BACKGROUND:** The purpose of the program is to keep traffic moving by removing traffic impediments, such as cars with mechanical problems or that have been involved in accidents, as well as assisting the motoring public. The program provides a tow truck with a qualified technician patrolling the target area. The service began in 2003 through a Placer County Air Pollution Control District (APCD)'s AB 2766 funds to implement a Freeway Service Patrol in the congested areas of I-80 in the South Placer County area. In 2005 PCTPA became eligible to receive funding under the State's FSP program. Since then, the program has been expanded with increased service hours to cover I-80 from Roseville to Auburn and SR 65 from I-80 to Twelve Bridges Dr.

Juxtaposed with this need is funding availability. FSP is subject to annual State budget allocations and formulas, as well as annual grants, and the available funding varies. Staff works closely with the CHP and the contractor to tweak the program, including service hours, days, and costs, to balance with available funding.

### **WORK PROGRAM:**

- Coordinating with California Highway Patrol, administer and monitor FSP program **Ongoing**
- Publicize FSP program and benefits **Ongoing**
- Participate in regional and statewide FSP oversight committees **As needed**
- Participate in annual "ride-alongs" with California Highway Patrol and contractor **Annually**
- Participate in FSP Technical Advisory Committee meetings **Ongoing**
- Contract and coordinate with the Sacramento Transportation Authority in monitoring FSP operator activities and performance **Ongoing**

### **PRODUCTS:**

- Progress reports **Quarterly**
- FSP brochures **Ongoing**
- FSP signage and material updates **As needed**
- FSP contract change orders **As Needed**

**WORK ELEMENT 80 (continued)**  
**FREEWAY SERVICE PATROL (FSP)**

<b>REVENUES</b>		<b>EXPENDITURES</b>	
FSP State Allocation	\$439,563 \$485,440	PCTPA	\$59,450 \$66,001
		FSP contractor	530,000
STBG	\$160,687 \$18,964	Sacramento Transportation Authority Support	5,800
<u>Agency LTF (CMAQ Swap Carryover)</u>	\$102,058	Legal	1,000
		FSP Brochures	2,000
		Meetings, travel, and notifications	2,000
<b>TOTAL</b>	<b>\$600,250</b> <b>\$606,801</b>		<b>\$600,250</b> <b>\$606,801</b>
Percent of budget: 8.46% 8.91%			

## **WORK ELEMENT 100**

### **SOUTH PLACER REGIONAL TRANSPORTATION AUTHORITY (SPRTA)**

#### **ADMINISTRATION**

**PURPOSE:** To provide staffing and administrative support for the South Placer Regional Transportation Authority.

**BACKGROUND:** PCTPA adopted a Regional Transportation Funding Strategy in August 2000 which included the development of a regional transportation impact fee program. PCTPA staff worked with the jurisdictions of South Placer County, as well as the development community, environmentalists, and community groups to develop a program and mechanism to implement this impact fee. The SPRTA, formed in January 2002, is the result of those efforts.

Under the Joint Powers Agreement that formed SPRTA, PCTPA is designated as the entity to provide administrative, accounting, and staffing support for the Authority. PCTPA is to be reimbursed for those staffing costs.

PCTPA and SPRTA members developed a comprehensive travel demand forecasting model (TDF) and Tier I and II Regional Impact Fee update in FY2022/23. When this major milestone is successfully completed, staff will enter a maintenance mode of assisting member agencies with the implementation of the TDF model and fee program. Staff has retained an on-call contract with a consultant to assist with technical questions.

#### **WORK PROGRAM:**

- Provide administrative, accounting, and staff support for the SPRTA **Ongoing**
- Oversee the implementation of the SPRTA's traffic impact fee as delineated in the Implementation Program, providing updates as indicated **Ongoing**
- Work with member jurisdictions and the State's SCIP and BOND programs to accept fee payments from those programs **Ongoing**
- Develop agendas for Authority Board and advisory committees **Monthly/as needed**
- Provide financial information to Board **Ongoing**
- Provide information and reports to interested developers, groups, and citizens **Ongoing**
- Work with member jurisdictions to update the JPA agreement **As needed**
- Prepare Annual Reports and Five-Year Reports for the SPRTA fee, per AB1600 **Annually in December**
- [Complete an update to the Tier 1 fee program October 2023](#)

**WORK ELEMENT 100 (continued)**  
**SPRTA ADMINISTRATION**

**PRODUCTS:**

- SPRTA Improvement Program updates **As needed**
- Joint Powers Agreement amendments **As needed**
- SPRTA FY 2023/24 Budget **June 2023**
- SPRTA FY 2023/24 Budget updates **As needed**
- SPRTA Cash flow projections **As needed**
- Contracts for needed services, such as traffic modeling and attorney services **Annually/as needed**
- SPRTA Board agendas and minutes **Monthly/as needed**
- SPRTA Technical Advisory Committee agendas and minutes **Monthly/as needed**
- SPRTA financial reports **Quarterly**
- Updated Joint Powers Agreement **As needed**
- SPRTA Annual Fee Program reports **Each December**
- Tier 1 Fee Program Nexus Study Report **October 2023**

<u>REVENUES</u>		<u>EXPENDITURES</u>	
SPRTA	\$135,925	PCTPA	\$95,925
	\$162,548		\$122,548
		On-Call Model and Fee Assistance Consultant	\$40,000
TOTAL	\$135,925	TOTAL	\$135,925
	\$162,548		\$162,548
Percent of budget:	<del>1.92%</del> 2.39%		



**Table 1**

**Budget Summary  
FY 2023/24**

<b>Expenditures</b>	<b>FY 2023/24 Amendment #2</b>	<b>FY 2023/24 Amendment #1</b>	<b>Difference</b>
Salary	\$986,391	\$951,618	\$34,773
Benefits	\$529,509	\$547,836	(\$18,327)
Direct (Table 2)	\$4,694,260	\$4,984,048	(\$289,788)
Indirect (Table 3)	\$599,099	\$608,875	(\$9,776)
<b>Total</b>	<b>\$6,809,260</b>	<b>\$7,092,377</b>	<b>(\$283,117)</b>
<b>Revenues</b>	<b>FY 2023/24 Amendment #2</b>	<b>FY 2023/24 Amendment #1</b>	<b>Difference</b>
LTF Administration	\$475,000	\$475,000	\$0
LTF Planning	\$1,159,452	\$1,347,624	(\$188,172)
Rural Planning Assistance - Formula	\$422,000	\$422,000	\$0
ALUC Fees	\$2,500	\$2,500	\$0
STIP Planning Funds	\$144,000	\$144,000	\$0
CMAQ Grant - CMP	\$50,000	\$50,000	\$0
Caltrans FSP Grants	\$485,440	\$439,563	\$45,877
LTF<>CMAQ Swap with Roseville (FSP)- Carryover	\$102,397	\$0	\$102,397
CMAQ/FSP	\$0	\$0	\$0
STBG Funds - FSP	\$18,964	\$160,687	(\$141,723)
Building Administration	\$36,488	\$36,173	\$315
Capitol Corridor Marketing Match	\$0	\$0	\$0
Interest	\$10,000	\$2,000	\$8,000
SPRTA Administration	\$162,548	\$135,925	\$26,623
SPRTA - I80/SR 65 IC	\$408,236	\$411,744	(\$3,508)
SPRTA - Placer Parkway	\$17,510	\$17,550	(\$40)
SPRTA - SR 65 Widening	\$271,584	\$283,645	(\$12,061)
SPRTA - I-80 Aux Lanes	\$299,474	\$330,234	(\$30,760)
HPP Section 1702 - I-80 Auxiliary Lanes	\$0	\$0	\$0
HIP Grant - I-80 Auxiliary Lanes	\$0	\$183,725	(\$183,725)
CMAQ Grant - SR 49 Sidewalks	\$1,162,894	\$1,180,000	(\$17,106)
LTF Ped/Bike Discretionary - SR 49 Sidewalks	\$194,500	\$0	\$194,500
ATP State Funding - SR 49 Sidewalks	\$0	\$180,000	(\$180,000)
Caltrans SHA - Placer Countywide Active Transportatic	\$146,019	\$0	\$146,019
Western Placer CTSA JPA Administration	\$142,310	\$132,980	\$9,330
CTSA - Transit Planning	\$143,107	\$147,987	(\$4,880)
Baseline/Riego Road-Staff/Consultant Reimburse	\$390,456	\$390,040	\$416
ZETCP	\$75,000	\$0	\$75,000
Placer Parkway Amendment	\$0	\$0	\$0
LTF Additional Contribution from Jurisdictions-WE61	\$400,000	\$400,000	\$0
LTF Carryover	\$288,736	\$287,100	\$1,636
	\$0	\$0	\$0
<b>Total</b>	<b>\$7,008,615</b>	<b>\$7,160,477</b>	<b>(\$151,862)</b>
<b>Contingency Fund Balance</b>	<b>FY 2023/24 Amendment #2</b>	<b>FY 2023/24 Amendment #1</b>	<b>Difference</b>
PCTPA	\$1,410,959	\$1,410,959	\$0
Nevada Station	\$50,000	\$50,000	\$0
<b>Total</b>	<b>\$1,460,959</b>	<b>\$1,460,959</b>	<b>\$0</b>
<b>Revenue to Expenditure Comparison</b>	<b>FY 2023/24 Amendment #2</b>	<b>FY 2022/23 Amendment #1</b>	<b>Difference</b>
Surplus/(Deficit)	\$199,355	\$68,100	\$131,256

**Table 2**

<b>Direct Costs</b>				
<b>FY 2023/24</b>				
	FY 2023/24		FY 2023/24	
	Amendment #2	Amendment #1	Difference	Source
ED Recruiter/Applicant Travel Costs (WE10)	\$ -	\$ -	\$0	LTF
TDA Fiscal Audits (WE 11)	\$43,480	\$43,480	\$0	LTF
Triennial Transit Performance Audits (WE 11)	\$0	\$0	\$0	LTF
Federal Advocacy Services (WE 13)	\$60,000	\$75,000	(\$15,000)	LTF
State Advocacy Services (WE 13)	\$30,000	\$30,000	\$0	LTF
CalCOG Membership (WE 13)	\$3,399	\$3,399	\$0	LTF
Chamber of Commerce Memberships (WE 13)	\$6,200	\$6,200	\$0	LTF
Advocacy Expenses/Travel (WE 13)	\$10,000	\$10,000	\$0	LTF
Legislative Tracking Services (WE 13)	\$0	\$4,650	(\$4,650)	LTF
Alternative Fuel Vehicle Marketing/Support (WE 14)	\$2,000	\$2,000	\$0	CMAQ
TNT/TMA Membership (WE 14)	\$6,720	\$6,400	\$320	LTF
Meeting Supplies, Travel, and Postage (WE 14)	\$10,000	\$10,000	\$0	LTF
Communications Consultant (WE 14)	\$47,500	\$47,500	\$0	CMAQ
Graphics Consultant (WE14)	\$25,000	\$25,000	\$0	LTF
Grant Writer (WE50)	\$25,000	\$25,000	\$0	LTF
RTP Update consultant (WE 20)	\$120,000	\$120,000	\$0	LTF
Community Engagement Software (WE20)	\$20,000	\$20,000	\$0	LTF/STIP
SACOG Payment (WE 20)	\$522,755	\$522,755	\$0	LTF, RPA
Transit Consultant - Short Range Transit Plan (WE 24)	\$0	\$0	\$0	CTSA
Transit Consultant - Marketing CTSA & Microtransit (WE 24)	\$0	\$0	\$0	CTSA
ALUCP Update Consultant (WE 27)	\$0	\$0	\$0	LTF
ALUC Consulting Services (WE 27)	\$10,000	\$10,000	\$0	ALUC fees, LTF
Bicycle Map Printing (WE 33)	\$5,500	\$5,500	\$0	LTF
Capitol Corridor Marketing (WE 35)	\$0	\$0	\$0	CMAQ, LTF, CCJPA
Placer Parkway Consultant (WE40)	\$0	\$0	\$0	Developer Reimb.
SR 65/I80 Interchange Reconfiguration Consultant (WE41)	\$310,000	\$310,000	\$0	SPRTA
SR 65 Widening Reconfiguration Consultant (WE42)	\$200,000	\$200,000	\$0	SPRTA
SR 65 Widening Permit Fees (WE 42)	\$1,800	\$1,800	\$0	SPRTA
I-80 Auxiliary Lanes Permit Fees (WE 43)	\$5,600	\$5,600	\$0	SPRTA
I-80 Auxiliary Lanes - PGE Gas Pipeline Relocation (WE43)	\$0	\$214,084	(\$214,084)	HIP/SPRTA
I-80 Auxiliary Lanes Consultant - ROW (WE 43)	\$0	\$0	\$0	HIP/SPRTA
I-80 Auxiliary Lanes -PG&E PUE abandonment (WE 43)	\$0	\$0	\$0	HPP, RPS9, HIP
I-80 Auxiliary Lanes Consultant - Construction Management (WE 43)	\$171,765	\$171,765	\$0	SPRTA
I-80 Auxiliary Lanes - PG&E ROW (WE 43)	\$5,600	\$5,600	\$0	SPRTA
SR 49 Sidewalk Permit Fees (WE 44)	\$0	\$0	\$0	CMAQ
SR 49 Sidewalk Consultant - Design (WE 44)	\$180,000	\$170,000	\$10,000	CMAQ/LTF
SR 49 Sidewalk Consultant - ROW (WE 44)	\$0	\$30,000	(\$30,000)	ATP
SR 49 Sidewalk - ROW Capital - Utility Relocation (WE 44)	\$900,000	\$900,000	\$0	ATP
SR 49 Sidewalk - Caltrans Advertise/Award (WE 44)	\$150,000	\$150,000	\$0	LTF
SR 49 Sidewalk - Env. Mitigation (WE 44)	\$48,220	\$48,220	\$0	CMAQ
SR 49 Sidewalk - Placer County - Safe Routes to Schools (WE44)	\$0	\$180,000	(\$180,000)	ATP
Placer Countywide Active Transportation Plan Consultant	\$127,626	\$0	\$127,626	Caltrans Grant
Riego/Baseline (WE 47)	\$259,709	\$259,709	\$0	Local Agency Funds
Meeting Supplies, Travel, and Notifications (WE 11, 12, 20, 24, 27, 33, 35, 40 through 48, 50,61 80)	\$37,000	\$21,000	\$16,000	RPA, LTF
Legal Services (WE 11, 20, 27, 35, 41, 42, 43, 44, 61, 80)	\$33,000	\$33,000	\$0	HPP, SPRTA
Sales Tax Consultant (WE 61)	\$12,000	\$12,000	\$0	LTF
Outreach Consultant/Meetings (WE 61)	\$180,000	\$180,000	\$0	LTF
Paid Digital Ads/Streaming (WE 61)	\$204,314	\$204,314	\$0	LTF
Video Production (WE 61)	\$42,500	\$42,500	\$0	LTF
Engineering Consultant (WE61)	\$0	\$0	\$0	LTF
Mall Kiosk Rent/Design (WE 61)	\$0	\$0	\$0	LTF
Billboards-Static/Electronic (WE 61)	\$0	\$0	\$0	LTF
Website (WE 61)	\$2,500	\$2,500	\$0	LTF
Metroquest (WE61)	\$7,000	\$7,000	\$0	LTF
Metroquest (WE35)		\$0	\$0	LTF
SR 65 Traffic Camera (WE 61)		\$0	\$0	LTF
Events (WE 61)	\$72,440	\$72,440	\$0	LTF
Economic Impact Analysis (WE 61)		\$0	\$0	LTF
Polling Consultant (WE 61)	\$93,832	\$93,832	\$0	LTF
Sales Tax Update (WE 61)		\$0	\$0	LTF
Funding Program Bonding Consultant (WE 61)	\$100,000	\$100,000	\$0	LTF
Printing (WE 61)	\$24,000	\$24,000	\$0	LTF
FSP Brochure (WE 80)	\$2,000	\$2,000	\$0	LTF
Freeway Service Patrol Contractor (WE 80)	\$530,000	\$530,000	\$0	Caltrans, SB1, LTF
Sacramento Transportation Authority (WE 80)	\$5,800	\$5,800	\$0	Caltrans, SB1, LTF
Traffic Model and Fee On-Call Consultant (WE 100)	\$40,000	\$40,000	\$0	SPRTA
<b>TOTAL</b>	<b>\$ 4,694,260</b>	<b>\$ 4,984,048</b>	<b>\$ (289,788)</b>	

LTF = Local Transportation Fund  
 CMAQ = Congestion Mitigation and Air Quality

RPA = Rural Planning Assistance Funds  
 STIP = State Transportation Improvement Program

FTA = Federal Transit Administration

**Table 3**

**Indirect Cost Budget  
FY 2023/24**

CALTRANS ICAP INDIRECT	FY 2023/24	FY 2023/24	Variance	Variance %
	Amendment #2	Amendment #1		
ADVERTISING	\$1,000	\$1,000	\$0	0.00%
COMMUNICATION	\$15,000	\$15,000	\$0	0.00%
OFFICE/COMPUTER EQUIPMENT	\$35,000	\$55,000	(\$20,000)	-36.36%
SUBSCRIPTIONS	\$1,000	\$1,000	\$0	0.00%
OFFICE/COMPUTER EQUIP MAINTENANCE	\$14,120	\$14,120	\$0	0.00%
FURNITURE	\$21,000	\$1,000	\$20,000	2000.00%
INSURANCE	\$20,000	\$20,000	\$0	0.00%
LEGAL	\$10,000	\$5,000	\$5,000	100.00%
MEMBERSHIP/TRAINING	\$20,000	\$20,000	\$0	0.00%
OFFICE SUPPLIES	\$3,000	\$3,000	\$0	0.00%
POSTAGE & DELIVERY	\$2,500	\$2,500	\$0	0.00%
PRINTING & REPRODUCTION	\$4,000	\$4,000	\$0	0.00%
TRAVEL/AUTO/LODGING	\$3,000	\$3,000	\$0	0.00%
UTILITIES/MAINTENANCE	\$7,000	\$15,000	(\$8,000)	-53.33%
ACTUARIAL	\$8,910	\$8,910	\$0	0.00%
FISCAL AUDIT	\$18,400	\$18,400	\$0	0.00%
INDIRECT LABOR - <i>Note 1</i>	\$401,944	\$371,896	\$30,048	8.08%
<b>Subtotal</b>	\$585,874	\$558,826	\$27,048	4.84%
INDIRECT COST ADJUSTMENT FROM FY 20/21	(\$141,775)	(\$141,775)	\$0	0.00%
<b>ICAP ALLOWABLE TOTAL</b>	<b>\$444,099</b>	<b>\$417,051</b>	<b>\$27,048</b>	
<b>TOTAL INDIRECT</b>				
BOARDMEMBER REIMBURSEMENT	\$12,000	\$12,000	\$0	0.00%
MEETING SUPPLIES	\$5,000	\$5,000	\$0	0.00%
OFFICE SPACE	\$138,000	\$174,824	(\$36,824)	-21.06%
<b>SUBTOTAL</b>	<b>\$155,000</b>	<b>\$191,824</b>	<b>(\$36,824)</b>	<b>-19.20%</b>
<b>INDIRECT COST BUDGET TOTAL</b>	<b>\$599,099</b>	<b>\$608,875</b>	<b>(\$9,776)</b>	<b>-1.61%</b>

*Note 1 - Indirect Labor recalculated based on Caltrans Indirect Cost Plan directives*

**Table 4**

**Revenue - 2023/24 OWP Amendment #2**

Work Element	Current Year LTF 2023/24	Rural Plan Assist	STIP	Caltrans Sustainable Communities Grant	SPRTA	CMAQ	FSP Grants	CTSA	Other	
5) Agency Admin - Indirect	\$0								\$ 401,944	(1)
10) Agency Admin - OWP	\$38,199	\$25,000								
11) TDA Implementation	\$135,901									
12) Intergovernmental Coordination	\$103,116		\$20,000							
13) Intergovernmental Advocacy	\$169,022								\$10,000	(2)
14) Communications/Outreach	\$120,137					\$40,500			\$36,488	(4)
15) Building Administration	\$0									
20) SACOG/MPO Planning Integration	\$479,131	\$397,000	\$60,000							
23) CTSA Administration	(\$0)							\$142,310		
24) Transit Planning	\$0							\$143,107		
27) Airport Land Use Commission	\$65,205								\$2,500	(6)
33) Bikeway Planning	\$9,200					\$2,000				
35) Capitol Corridor/Rail	\$20,999					\$7,500			\$0	(3)
40) Placer Parkway	\$0								\$0	(9)
41) I-80/SR 65 Interchange	\$0									
42) SR 65 Widening	\$0									
43) I-80 Auxiliary Lanes	\$0								\$0	(10)
44) SR 49 Sidewalks	\$0								\$194,500	(5)
47) Riego/Baseline Widening	\$0					\$1,162,894			\$390,456	(11)
48) Placer Active Transportation Plan	\$18,918			\$146,019						
50) Project Programming and Reporting	\$2,068		\$64,000						\$75,000	(13)
61) Transportation Funding Program	\$561,937								\$400,000	(14)
80) Freeway Service Patrol	(\$0)					\$0	\$485,440		\$121,361	(16)
100) SPRTA Administration	\$0				\$162,548					
Unallocated Revenue/Reserve	\$199,355									
<b>Total</b>	<b>\$1,923,188</b>	<b>\$422,000</b>	<b>\$144,000</b>	<b>\$146,019</b>	<b>\$1,159,352</b>	<b>\$1,212,894</b>	<b>\$485,440</b>	<b>\$285,417</b>	<b>\$ 1,230,305</b>	

Notes: (1) Work Element 05 is indirect and spread over all other work elements; (2) Estimated interest; (3) Capitol Corridor Marketing Match; (4) Building Admin Reimburse;

(5) LTF Ped/Bike; (6) ALUC fees; (7) FTA Section 5304 including Local Match; (8) Cities of Auburn and Lincoln; (9) Developer Reimbursement;

(10) Federal HIP Funding; (11) Counties of Placer and Sutter, City of Roseville; (12) Local Agency Funding; (13) ATP Federal Funding ZETCP (14) Addtl LTF-Rsvl, Rock, Linc, Cnty for WE61

(15) Reno/Tahoe Rail (16) STBG Funds

**Table 5**

Expenditures - 2023/24 OWP Amendment												
	PY	Staff		Caltrans /CAP rate		SACOG	Consulting/ ROW Acquisition	Outreach/ Events	Legal	Other	Total	% of Budget
		Staff	Indirect	Indirect	Indirect							
5/Agency Admin - Indirect	1.50	\$401,944									\$401,944	see Table 3
10/Overall Work Program	0.16	\$45,297	\$13,270	\$4,632	\$						\$63,199	0.93%
11/TDA Implementation	0.25	\$65,167	\$19,091	\$6,663	\$43,480			\$500	\$1,000		\$135,901	2.00%
12/Intergovernmental Coordination	0.23	\$70,324	\$20,602	\$7,191					\$25,000		\$123,116	1.81%
13/Intergovernmental Advocacy	0.16	\$49,756	\$14,577	\$5,086	\$90,000				\$19,599	(3),(8),(10)	\$179,022	2.63%
14/Communications/Outreach	0.18	\$49,754	\$14,576	\$5,087	\$72,500				\$18,720	(2),(7),(9)	\$160,637	2.36%
15/Building Administration	0.09	\$26,152	\$7,662	\$2,674						(6)	\$36,488	0.54%
20/SACOG/MPO Planning Integration	0.80	\$193,788	\$56,772	\$19,815	\$522,755		\$140,000		\$1,000	(6)	\$936,131	13.75%
23/CTSA Administration	0.38	\$101,999	\$29,882	\$10,429			\$0		\$500	(6),(12)	\$143,107	2.10%
24/Transit Planning	0.40	\$102,212	\$29,944	\$10,451			\$10,000		\$1,000	(6)	\$67,705	0.99%
27/ALUC/Aviation Planning	0.15	\$40,284	\$11,802	\$4,119					\$1,000	(6),(13)	\$11,200	0.16%
33/Bikeway Planning	0.02	\$4,085	\$1,197	\$418					\$5,500	(6)	\$28,499	0.42%
35/Capitol Corridor Rail	0.07	\$19,709	\$5,774	\$2,015					\$500	(6)	\$17,510	0.26%
40/Placer Parkway	0.03	\$10,756	\$3,152	\$1,100			\$0		\$2,000	(6)	\$408,236	6.00%
41/I-80/SR 65 Interchange	0.23	\$68,618	\$20,102	\$7,016			\$310,000		\$2,000	(6)	\$271,584	3.99%
42/SR 65 Widening	0.15	\$49,658	\$14,548	\$5,078			\$200,000		\$0	(6),(14)	\$299,474	4.40%
43/I-80 Auxiliary Lanes	0.27	\$77,414	\$22,679	\$7,916			\$177,365		\$7,500	(6),(14)	\$1,357,394	19.93%
44/SR 49 Sidewalks	0.19	\$50,655	\$14,840	\$5,179			\$1,230,000		\$7,500	(6),(14)	\$390,456	5.73%
47/Riego/Baseline Widening	0.32	\$93,712	\$27,454	\$9,582			\$259,709			(6)	\$164,937	2.42%
48/Placer Active Transportation Plan	0.12	\$26,026	\$7,625	\$2,661			\$127,626			0	\$141,068	2.07%
50/Project Programming and Reporting	0.29	\$82,474	\$24,162	\$8,433			\$25,000		\$1,000	(6)	\$961,937	14.13%
61/Transportation Funding Program	0.50	\$152,917	\$44,799	\$15,636			\$731,586		\$10,000	(15)	\$606,801	8.91%
80/Freeway Service Patrol	0.17	\$47,305	\$13,859	\$4,837			\$530,000		\$1,000	(4),(6),(11)	\$162,548	2.39%
100/SPRTA Administration	0.31	\$87,835	\$25,732	\$8,981			\$40,000				\$66,809,260	100.00%
<b>Total</b>	<b>7.00</b>	<b>\$1,515,900</b>	<b>\$444,099</b>	<b>\$155,000</b>	<b>\$522,755</b>	<b>\$3,987,266.00</b>	<b>\$0</b>	<b>\$33,000</b>	<b>\$151,239</b>			

\* Items billed through Caltrans exclude "unallowable" indirect costs, which is primarily agency rent. See Table 3.

Notes: (1) WE 05 is indirect and proportionally spread over all other work elements; (2) Includes \$6,720 payment to TNT/TMA for outreach in Tahoe area; (3) travel and conference expenses

(4) FSP brochure; (5) transportation event sponsorship; (6) meetings, travel and notifications; (7) alternative fuel vehicle support; (8) chamber of commerce memberships; (9) meetings, travel and postage;

(10) CalCOG membership; (11) STA Payment; (12) PCN and CalACT memberships; (13) Bike Map printing; (14) Permit Fees (15) Metroquest Software

**Table 6****Summary of Staff Hours and Costs  
FY 2023/24**

	Staff Hours	Staff Hour %	Person Years	Staff Costs	Staff Cost %
Agency Administration: Indirect	3126	21.47%	1.50	\$401,944	20.96%
Agency Admin - OWP	330	2.27%	0.16	\$45,297	2.36%
TDA Implementation	530	3.64%	0.25	\$65,167	3.40%
Intergovernmental Coordination	480	3.30%	0.23	\$70,324	3.67%
Intergovernmental Advocacy	338	2.32%	0.16	\$49,758	2.59%
Comm/Outreach	380	2.61%	0.18	\$49,754	2.59%
Building Administration	195	1.34%	0.09	\$26,152	1.36%
SACOG/MPO Plan Integration and Support	1670	11.47%	0.80	\$193,788	10.10%
CTSA Administration	790	5.43%	0.38	\$101,999	5.32%
South Placer Transit Project	835	5.73%	0.40	\$102,212	5.33%
ALUC/Aviation Planning	311	2.14%	0.15	\$40,284	2.10%
Bikeway Planning	35	0.24%	0.02	\$4,085	0.21%
Capitol Corridor Rail	155	1.06%	0.07	\$19,709	1.03%
Placer Parkway EIR	70	0.48%	0.03	\$10,758	0.56%
I-80/SR 65 Interchange	474	3.26%	0.23	\$68,618	3.58%
SR 65 Widening	320	2.20%	0.15	\$49,658	2.59%
I-80 Auxiliary Lanes	560	3.85%	0.27	\$77,414	4.04%
SR 49 Sidewalks	400	2.75%	0.19	\$50,655	2.64%
Mobility Action Plan	0	0.00%	0.00	\$26,026	1.36%
Riego/Baseline Widening	670	4.60%	0.32	\$93,712	4.89%
Project Programming and Reporting	608	4.18%	0.29	\$82,474	4.30%
Regional Funding Program	1038	7.13%	0.50	\$152,917	7.97%
Freeway Service Patrol	352	2.42%	0.17	\$47,305	2.47%
SPRTA Administration	643	4.42%	0.31	\$87,835	4.58%
<b>Total</b>	<b>14560</b>	<b>98.3%</b>	<b>7.00</b>	<b>\$1,917,844</b>	<b>100.0%</b>

**Table 7**

<b>Agency Salary and Pay Range FY 2023/24</b>			
		<b>FY 2023/24 Monthly Salary Range</b>	
<b>Position Title</b>	<b>Classification</b>	<b>Low</b>	<b>High</b>
Executive Director	Executive Director	16819	22539
Deputy Executive Director	Deputy Director	13401	20337
Principal Planner/Director of Planning	Principal Planner	13939	16098
Senior Transportation Planner	Senior Planner	9982	13430
Associate Planner	Associate Planner	7870	11738
Assistant Planner	Assistant Planner	6032	7932
Senior Engineer	Senior Engineer	10470	13871
Associate Engineer	Associate Engineer	8725	11929
Fiscal/Administrative Officer	Fiscal/Administrative Officer	11480	16326
Accounting Specialist	Accounting Specialist	5873	7898
Planning Administrator/Board Secretary II	Executive Assistant II	10103	13803
Planning Administrator/Board Secretary I	Executive Assistant I	7807	10286
		<b>FY 2023/24 Hourly Salary Range</b>	
<b>Position Title</b>	<b>Classification</b>	<b>Low</b>	<b>High</b>
IT Administrator	Associate Planner	45.41	57.95
Planning Intern	Planning Intern	26.11	33.30

*Includes 3% COLA*

*Additional Positions and Updated Salary Ranges Approved by Board 6/29/23*



**Placer County  
Transportation  
Planning Agency**

299 Nevada Street  
Auburn, CA 95603  
(530) 823-4030