



→ **Countywide Zero Emission Vehicle (ZEV) Infrastructure Plan**  
Placer County Transportation Planning Agency (PCTPA)



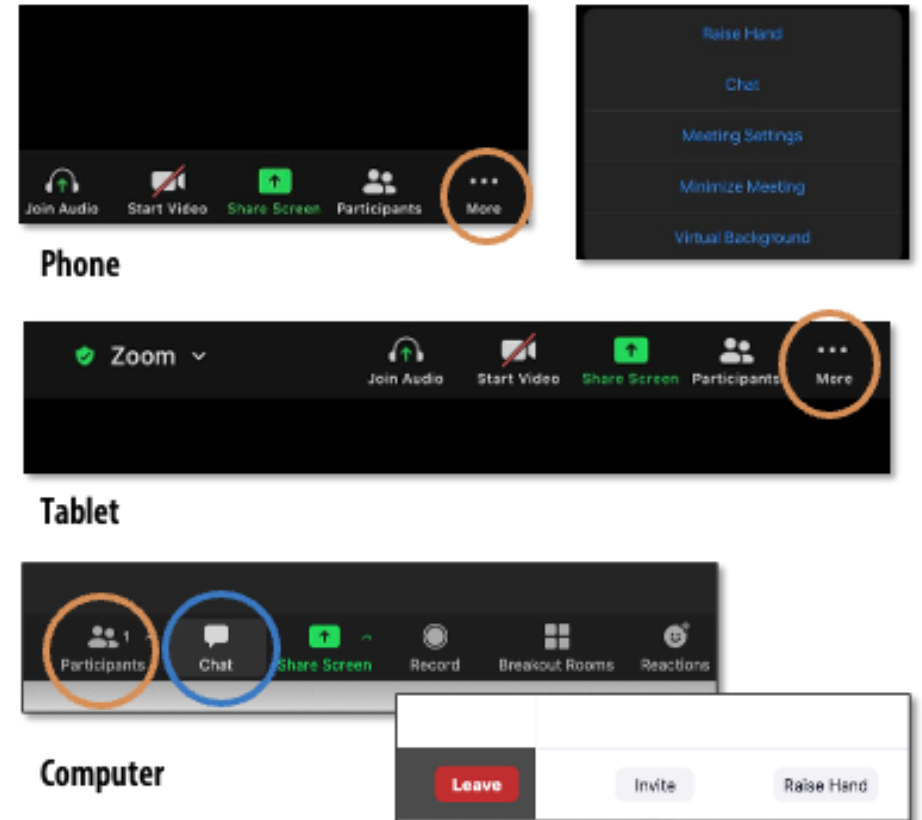
Virtual Workshop

March 24, 2026



# Workshop Logistics

- Zoom orientation:
  - You will remain muted during the presentation to limit any background noise.
  - Add any questions or comments to the chat box.
  - We will answer as many questions as possible.
  - A recording of this meeting and summary will be posted to the website.
- Workshop materials be posted:  
<https://www.pctpa.net/zev> will
- Previous workshop materials (November 5, 2025) are also available at:  
<https://www.pctpa.net/zev>



# Agenda

---

- Welcome and Introductions
- Background and Motivation
- Future Trends/Needs
- Siting Analysis
- Priority ZEV Charging Sites for Near-Term Deployment
- Implementation Plan and Pilot Projects
- Public Engagement
- Discussion/Q&A
- Next Steps



# Presenters

---



## Placer County Transportation Planning Agency

David Melko  
Principal Transportation Planner



Sam Pournazeri  
Project Manager

Theodora Konstantinou  
Technical Lead



Felix Molina  
Senior Outreach  
Coordinator

# Live Poll #1

---

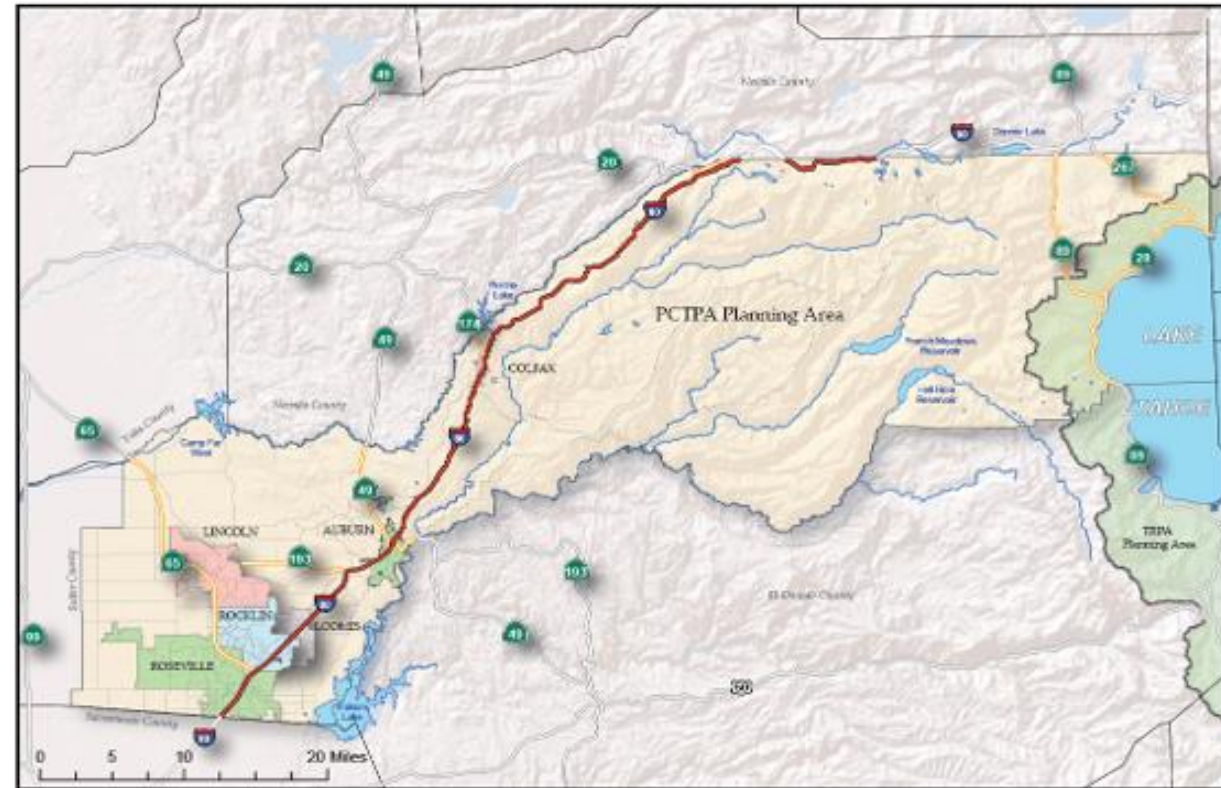
## Which part of Placer County do you call home or represent?

- Auburn
- Colfax
- Lincoln
- Loomis
- Rocklin
- Roseville
- Tahoe area (Olympic Valley, Martis Valley)
- Unincorporated Placer County
- Other (please put in chat)



# Who is PCTPA?

- PCTPA serves as the Regional Transportation Planning Agency.
- Coordinates across cities and the County to shape Placer County's transportation future.
- Guides transportation investments and meets state/federal requirements.
- Maximizes funding opportunities for local projects.
- Directs funds to improve mobility by car, bus, bike, and foot.



# ZEV Infrastructure Plan

- ZEVs are rapidly growing across all vehicle types.
- Infrastructure is key for charging and fueling.
- Planning is essential to guide smart, equitable investment.
- A ZEV Plan sets the roadmap for building this network.



# Where Placer County Stands Today



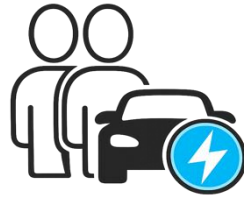
**22,092**

ZEVs Registered  
*(as of end of 2024)*



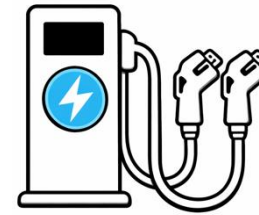
**16<sup>th</sup>**

Total ZEV Registration Rank  
*(Statewide)*



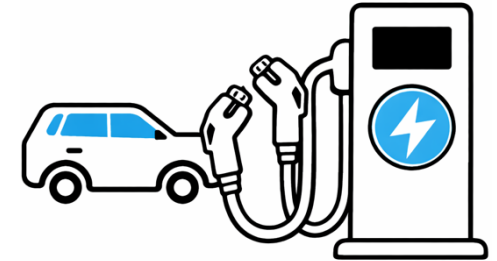
**12<sup>th</sup>**

ZEV Per Capita Rank  
*(Statewide)*



**572**

Public Charging Ports  
across 185 Station Sites  
*(as of 2025)*



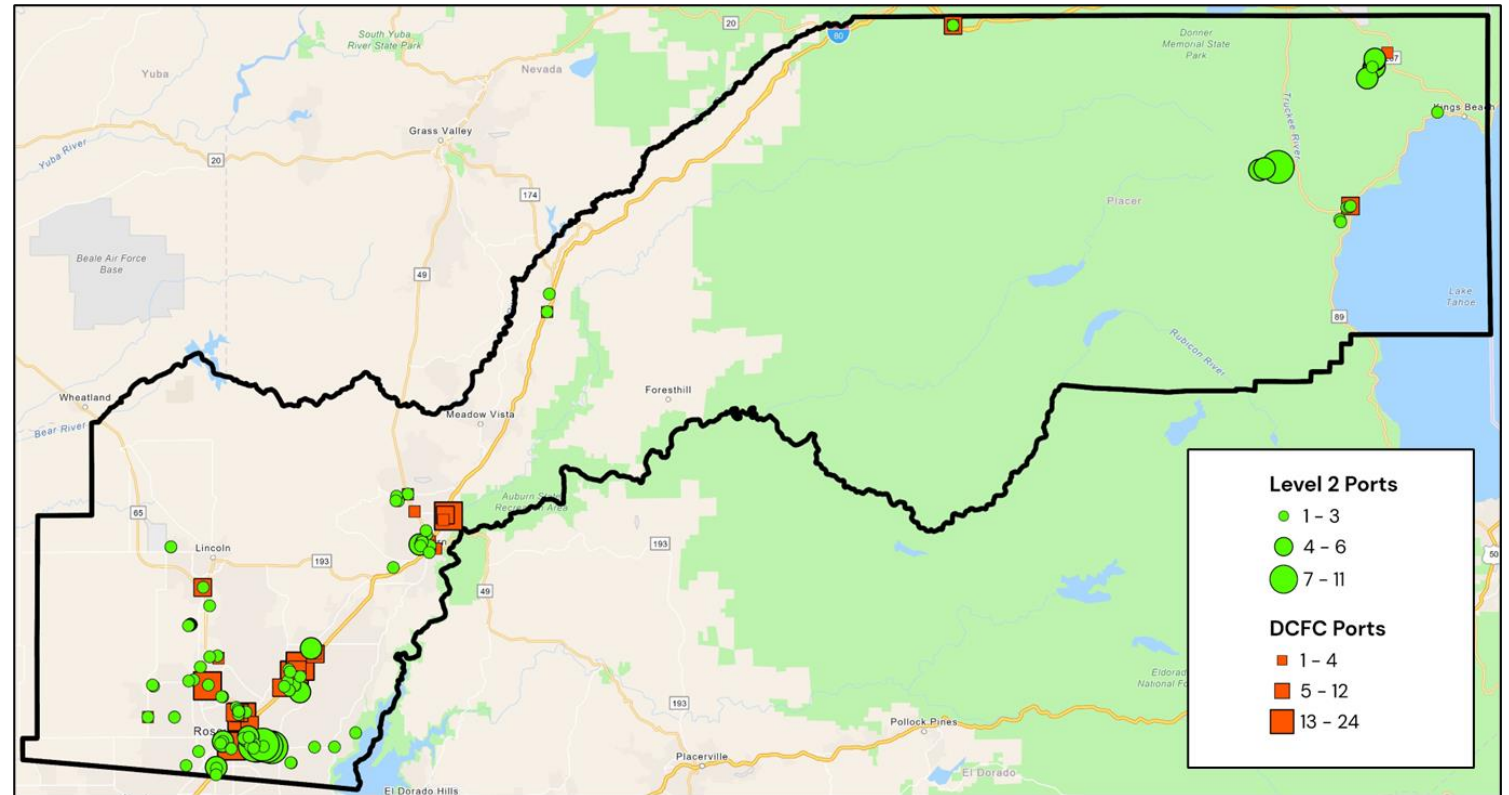
**44<sup>th</sup>**

ZEV Per Charging Port  
*(Statewide)*

*No charging infrastructure for medium and heavy-duty vehicles, and no hydrogen fueling stations*

# Charging Infrastructure Not Keeping Pace with ZEV Adoption

- Placer County ranks **44<sup>th</sup>** in the state for electric vehicles per charging port
- Most EV chargers are in urban areas of Placer County. Rural areas have limited charging infrastructure
- Almost **70%** of fast chargers are Tesla Superchargers
- Currently, there is no charging infrastructure for medium and heavy-duty vehicles



# How Demand Will Evolve

By 2035

**~103,700**  
*Light-duty ZEVs*



**~3,600 ports**

Public charging ports  
(3200 Level 2 and 400 DCFC)



**~6,400**  
*Medium/Heavy  
-Duty ZEVs*



**~290 ports**

High-power public charging ports  
(DCFC and Megawatt Charging Systems)



**2 stations**

Hydrogen stations  
(With ~2,200 kg/day capacity)



# Where Should the Charging Network Be Built?

## Strategic Framework for Site Selection

### Siting Criteria



Utilization

Land



Equity

Grid capacity



Environmental

## Interactive Mapping Tool

PCTPA ZEV Infrastructure Siting Analysis Tool by Cambridge Systematics, Inc.

Placer County Transportation Planning Agency ZEV Infrastructure Siting Analysis Tool

Home Quick Start Guide Site Typologies Siting Criteria

Selection Panel

Scenario Year: Base Vehicle Type: Light-duty Vehicle (LDV) Technology: Electric (For LDV and MHDV) Typology: Large Charger Type: Level 2 Chargers (LDV EV) Select a siting criterion: Weighted Composite Score Select a Land Use to filter parcels: (All)

→ Weighted Composite Score

- EV Charging Stations
- Logistics Facilities
- Truck Parking

© 2025 Mapbox. © OpenStreetMap

Parcel Scores: 0.64 5.15

View on Tableau Public

The tool is designed to help evaluate candidate sites (parcels) for ZEV public refueling infrastructure (EV charging or hydrogen refueling) for both light-duty and medium-heavy-duty vehicles. It is intended as a planning resource and does not prescribe where chargers or hydrogen stations should automatically be deployed.

<https://public.tableau.com/app/profile/cambridge.systematics7294/viz/PCTPAZEVInfrastructureSitingAnalysisTool/WelcomePage>

# What Does the Community Want?

**300+**  
Residents Engaged  
at **16** Community  
Events

## Community Events

- Placer County Fair
- Rocklin Hot Chilli & Cool Cars
- Colfax Railroad Days
- Auburn Co-Op Faire
- Lincoln High School Back to School Fair
- Placer Senior Resource Fair

**1** Virtual Public Workshop  
(11/5/2025)

## Farmers Markets

- Fowler Ranch
- Auburn Old Town

## Locations

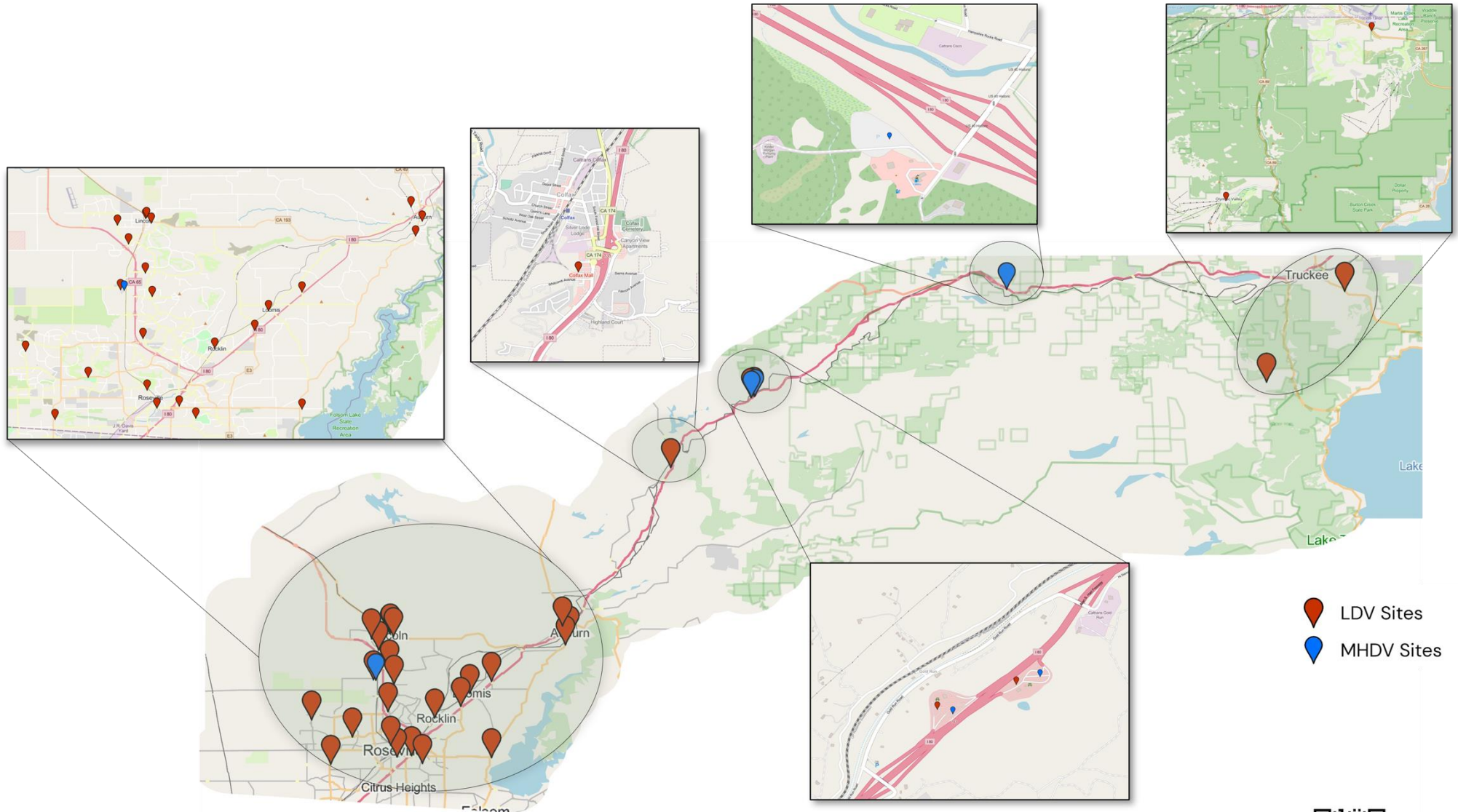
- EV Charging Station
- Moonraker Brewery

**544** Public Surveys

**26** Stakeholder Meetings



# What Are the Near Team Priority Sites?

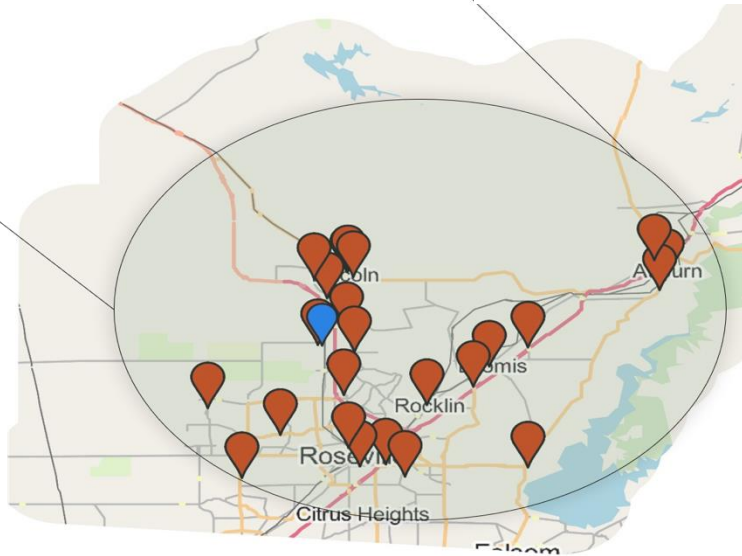
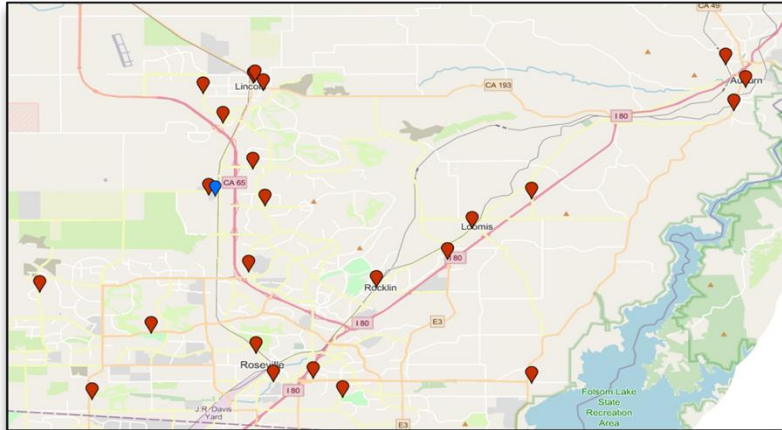


Notes:  
LDV: Light-duty vehicles  
MHDV: Medium/heavy-duty vehicles

An interactive Google Earth map showing the 30 priority sites is available at <https://earth.google.com/earth/d/17hMlcTcClnW4jqrDYornDwtHEX1MHZCc?usp=sharing>



# Priority Sites – Southern Area



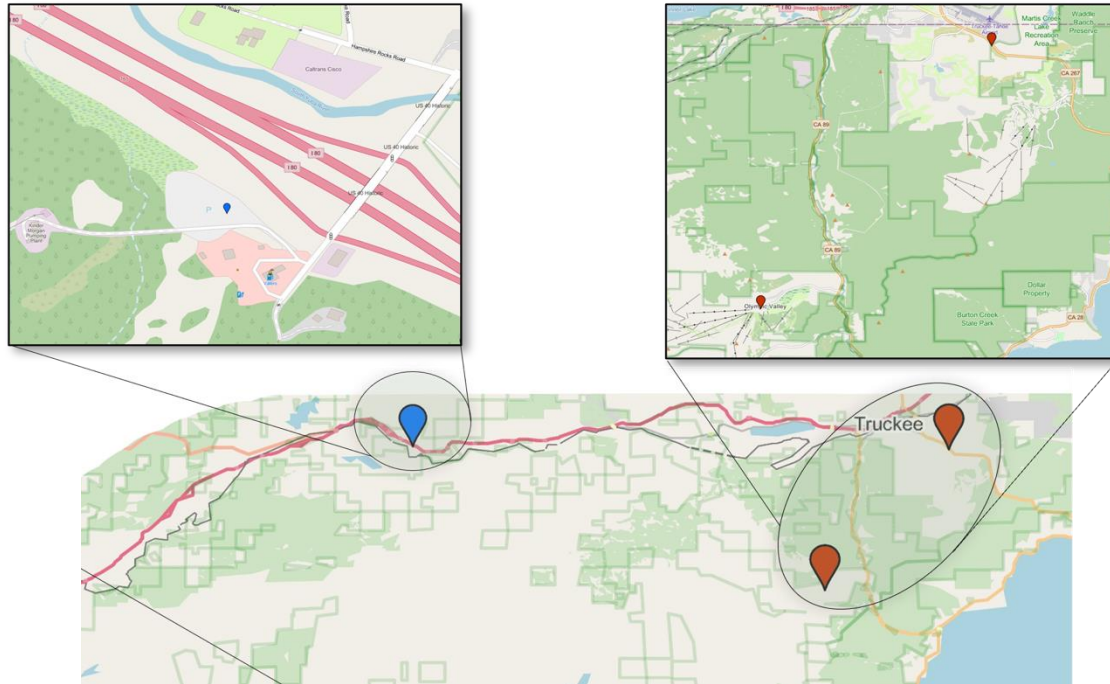
Site Name	Location / Jurisdiction	LDV or MHDV	Recommended Chargers
Thunder Valley Parking Lot	Lincoln	MHDV	2 × DCFC
U.S. Bank Parking Lot	Loomis	LDV	3 × L2, 3 × DCFC
Lincoln City Hall Parking	Lincoln	LDV	3 × L2, 3 × DCFC
Thunder Valley Parking Lot	Lincoln	LDV	4 × L2, 4 × DCFC
Lincoln Public Library	Lincoln	LDV	2 × DCFC
Club Lincoln Crossing	Lincoln	LDV	8 × L2
McBean Park Parking Area	Lincoln	LDV	5 × L2
Lincoln Community Center	Lincoln	LDV	8 × L2
Rocklin Park-and-Ride	Rocklin	LDV	5 × L2
Whitney Community Park	Rocklin	LDV	6 × L2
Hobby Lobby / Theater Area	Rocklin	LDV	4 × L2, 5 × DCFC
Rocklin Train Station	Rocklin	LDV	10 × L2
Gold Country Parking Area	Auburn	LDV	10 × L2
Maidu Market	Auburn	LDV	4 × DCFC
Nevada/Auburn Train Station	Auburn	LDV	8 × L2
Douglas & Sunrise Stores	Roseville	LDV	5 × DCFC
Placer Valley Soccer Complex	Roseville	LDV	4 × L2, 4 × DCFC
Maidu Park	Roseville	LDV	10 × L2
Saugstad Park-and-Ride	Roseville	LDV	6 × L2
Mahany Park	Roseville	LDV	3 × L2, 4 × DCFC
Placer County Fairgrounds	Roseville	LDV	8 × L2
Dry Creek Community Park	Roseville	LDV	4 × L2
Douglas/Auburn-Folsom Corner	Granite Bay	LDV	4 × DCFC
Penryn Park-and-Ride	Unincorporated Placer	LDV	4 × L2

# Priority Sites – Central Area



Site Name	Location / Jurisdiction	LDV or MHDV	Recommended Chargers
Sierra Market	Colfax	LDV	2 × DCFC
Gold Run Rest Areas (2 sites)	Unincorporated Placer	MHDV	2 × DCFC + hydrogen-ready
Gold Run Rest Areas (2 sites)	Unincorporated Placer	LDV	2 × DCFC

# Priority Sites – Northern Area



Site Name	Location / Jurisdiction	LDV or MHDV	Recommended Chargers
Soda Spring Truck Stop	Unincorporated Placer	MHDV	1 × DCFC + hydrogen-ready
Olympic Valley Parking	Tahoe Area	LDV	4 × L2, 2 × DCFC
Martis Valley Trailhead	Tahoe Area	LDV	4 × L2

# Which pilot project are you most excited to see move forward?

- Freight Corridor Medium- and Heavy-Duty Charging (I-80)
- Transit-Oriented Charging Hub (Lincoln Public Library)
- EV Carshare Hub in Underserved Communities



## Live Poll #3

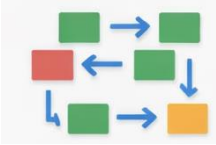
### What do you see as the biggest challenge to deploying ZEV infrastructure in your community?

- Funding and grant competitiveness
- Finding suitable sites/land use constraints
- Utility capacity and grid readiness
- Public awareness and demand uncertainty
- Coordination across jurisdictions



# How Do We Turn the Plan into Reality?

## Planning is not deployment



Structured six-phase implementation framework.

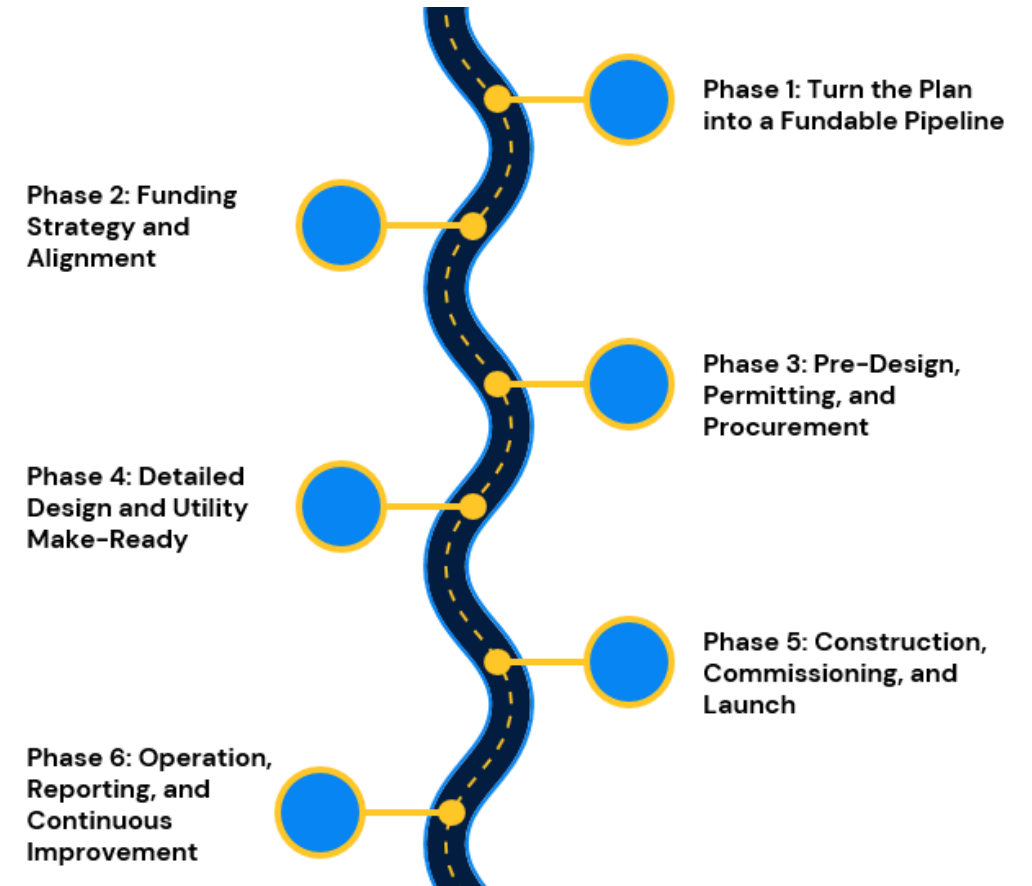


Eight scalable program concepts to accelerate deployment.



Three near-term pilot projects to demonstrate implementation.

## Six-phase implementation framework



# What New Program Models Can Accelerate Charging Deployment?

## 1 Transit-Oriented Charging Hub and Mobility Zone

- Level 2 and DC fast charging at transit stations and park-and-rides for commuters, transit fleets, and public use.

## 2 Curbside Level 2 Charging Program

- On-street Level 2 charging in the right-of-way for residents without off-street parking or at places with high dwelling time.

## 3 Resilient School-Based Charging and Emergency Power Hubs

- DC fast charging at schools with solar, storage, and vehicle-to-grid to support buses and backup power during outages.

## 4 Electric Vehicle (EV) Carshare Hubs in Underserved Communities

- Carshare hubs with dedicated charging that expand access to clean transportation for residents who do not own a private vehicle.

## 5 Freight Corridor Medium- and Heavy Duty Charging

- High-power freight charging hubs to support medium- and heavy-duty trucks and last-mile delivery fleets.

# What New Program Models Can Accelerate Charging Deployment?

---

## 6 Rural Community Charging Access Program

- Level 2 and targeted DC fast charging in rural and foothill communities to close network gaps and support residents, businesses, and tourism.

## 7 Workplace Charging at Employment and Industrial Centers

- Charging at major employment centers and industrial parks to support electric commuting and light-duty fleet operations.

## 8 Community Resource Centers as Resilient Charging Hubs

- Resilient charging at community centers, libraries, and shelters supported by solar and storage, with charging managed to protect critical loads during emergencies.

# What Are the Priority Pilots for Near-Term Implementation?

## Transit-Oriented Charging Hub

- **Concept:** 1 overhead pantograph charger for transit buses, 2 public DCFC for EV commuters and visitors.
- **Location:** Lincoln Public Library
- **Funding Options:** SB 125 funding, utility incentive, Placer County Clean Air Grant



## EV Carshare Hub in Underserved Communities

- **Concept:** App-based EV carshare, 2–3 vehicles per hub. Reduced pricing for income-qualified residents.
- **Location:** Potential hubs at Auburn Station, Downtown Auburn, Rocklin, Lincoln Transit Center
- **Funding Options:** CARB Clean Mobility Options



## Freight Corridor Medium- and Heavy-Duty Charging

- **Concept:** High-power chargers to support clean goods movement for freight haulers between Reno and the Bay Area, along I-80.
- **Location:** Truck stops or industrial sites near distribution centers; candidates near Emigrant Gap
- **Funding Options:** CEC ZEV infrastructure funding, utility make-ready programs, private fleet investment



# ZEV Infrastructure Draft Plan

## Draft Report

- Public draft report Released on March 13
- 30-day comment period ending on April 17

## Public Engagement

- Public workshop on March 24
- Continued engagement with communities and stakeholders

## Pilot Projects

- Continued engagement with local and regional partners

## Final Report

- Final report to be delivered early June
- Board approval by August 2026

PLACER COUNTY TRANSPORTATION  
PLANNING AGENCY

# ZERO EMISSION VEHICLE INFRASTRUCTURE PLAN



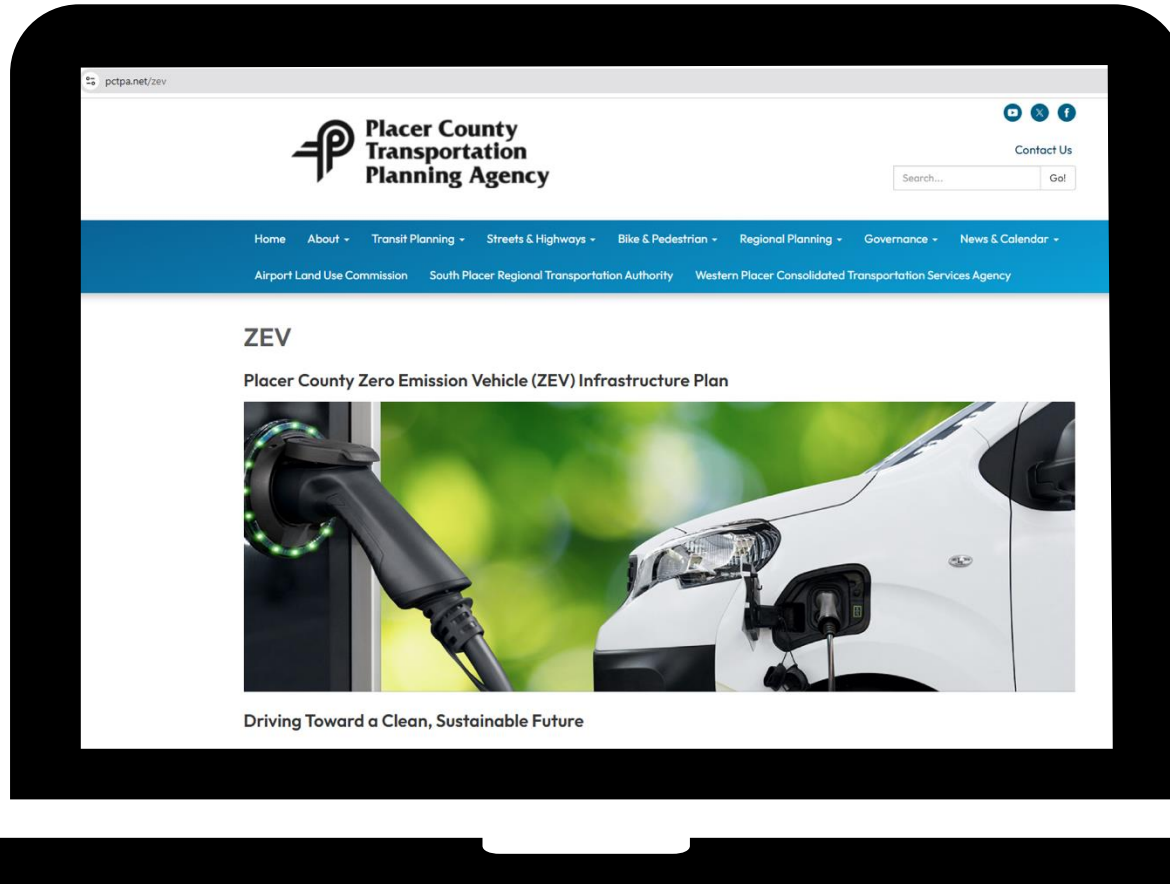
MARCH 2025 - PUBLIC DRAFT

The draft plan is posted for public review at <https://www.pctpa.net/zev>

Public comment period: March 16 – April 17



# Project Website



<https://www.pctpa.net/zev>



**Open Discussion and Q&A**

# Thank you!



# 30 Priority Sites–Full List

An interactive Google Earth map showing the 30 priority sites is available at:

<https://earth.google.com/earth/d/17hMlcTcCInW4jqrDYornDwtHEx1MHzCc?usp=sharing>

#	Site Name	Location / Jurisdiction	LDV or MHDV	Recommended Chargers
1	Thunder Valley Parking Lot	Lincoln	MHDV	2 × DCFC
2	Gold Run Rest Areas (2 sites)	Unincorporated Placer	MHDV	2 × DCFC + hydrogen-ready
3	Soda Spring Truck Stop	Unincorporated Placer	MHDV	1 × DCFC + hydrogen-ready
4	U.S. Bank Parking Lot	Loomis	LDV	3 × L2, 3 × DCFC
5	Lincoln City Hall Parking	Lincoln	LDV	3 × L2, 3 × DCFC
6	Thunder Valley Parking Lot (LDV)	Lincoln	LDV	4 × L2, 4 × DCFC
7	Lincoln Public Library	Lincoln	LDV	2 × DCFC
8	Club Lincoln Crossing	Lincoln	LDV	8 × L2
9	McBean Park Parking Area	Lincoln	LDV	5 × L2
10	Lincoln Community Center	Lincoln	LDV	8 × L2
11	Rocklin Park-and-Ride	Rocklin	LDV	5 × L2
12	Whitney Community Park	Rocklin	LDV	6 × L2
13	Hobby Lobby / Theater Area	Rocklin	LDV	4 × L2, 5 × DCFC
14	Rocklin Train Station	Rocklin	LDV	10 × L2
15	Gold Country Parking Area	Auburn	LDV	10 × L2
16	Maidu Market	Auburn	LDV	4 × DCFC
17	Nevada/Auburn Train Station	Auburn	LDV	8 × L2
18	Sierra Market	Colfax	LDV	2 × DCFC
19	Douglas & Sunrise Stores	Roseville	LDV	5 × DCFC
20	Placer Valley Soccer Complex	Roseville	LDV	4 × L2, 4 × DCFC
21	Maidu Park	Roseville	LDV	10 × L2
22	Saugstad Park-and-Ride	Roseville	LDV	6 × L2
23	Mahany Park	Roseville	LDV	3 × L2, 4 × DCFC
24	Placer County Fairgrounds	Roseville	LDV	8 × L2
25	Dry Creek Community Park	Roseville	LDV	4 × L2
26	Douglas/Auburn–Folsom Corner	Granite Bay	LDV	4 × DCFC
27	Olympic Valley Parking	Tahoe Area	LDV	4 × L2, 2 × DCFC
28	Martis Valley Trailhead	Tahoe Area	LDV	4 × L2
29	Gold Run Rest Areas (LDV)	Unincorporated Placer	LDV	2 × DCFC
30	Penryn Park-and-Ride	Unincorporated Placer	LDV	4 × L2