

# Request for Information (RFI)

Development of Alternative Truck Fueling Infrastructure near the Interstate 80/State Route 65 Interchange

**RFI 2024-01**

**Issuance Date:** Monday, March 25, 2024

**Response Due Date:** Monday, April 15, 2024 at 5:00 PM PT

## **Purpose of Request for Information (RFI)**

Placer County Transportation Planning Agency (PCTPA) is issuing this Request for Information (RFI) to solicit feedback and recommendations for the planning, coordination, and development of alternative truck fueling infrastructure along the Interstate 80 (I-80) corridor, which has been designated as an Alternative Fuel Corridor. PCTPA commissioned Jacobs to conduct a feasibility study (FS) to explore the potential of installing battery-electric truck charging infrastructure (BETCI) and hydrogen refueling infrastructure (HRI) near the I-80/State Route (SR) 65 interchange, in response to an increasing demand for sustainable and efficient trucking solutions in the region. This initiative is supported by various federal and state funding programs, including the National Electric Vehicle Infrastructure (NEVI) Formula Program, the Charging and Fueling Infrastructure grant program administered by the Federal Highway Administration, and the California Transportation Commission's Trade Corridor Enhancement Program (TCEP).

PCTPA is still in the information collection and development phase of the proposed project. As such, the purpose of the RFI is to collect inputs from potential market interests across varying relevant sectors to obtain information on how PCTPA can best support the deployment of alternative truck fueling infrastructure in line with its goal of providing safe, efficient, and high-quality Transportation infrastructure for the region. Although PCTPA prepared a study at the I-80/SR65 Interchange, they are seeking responses for the entire I-80 corridor with Placer County.

## **Section I: Contact Information**

All questions, inquiries, and requests for information related to this RFI should be directed to:

David Melko

Placer County Transportation Planning Agency

299 Nevada Street

Auburn, CA 95603

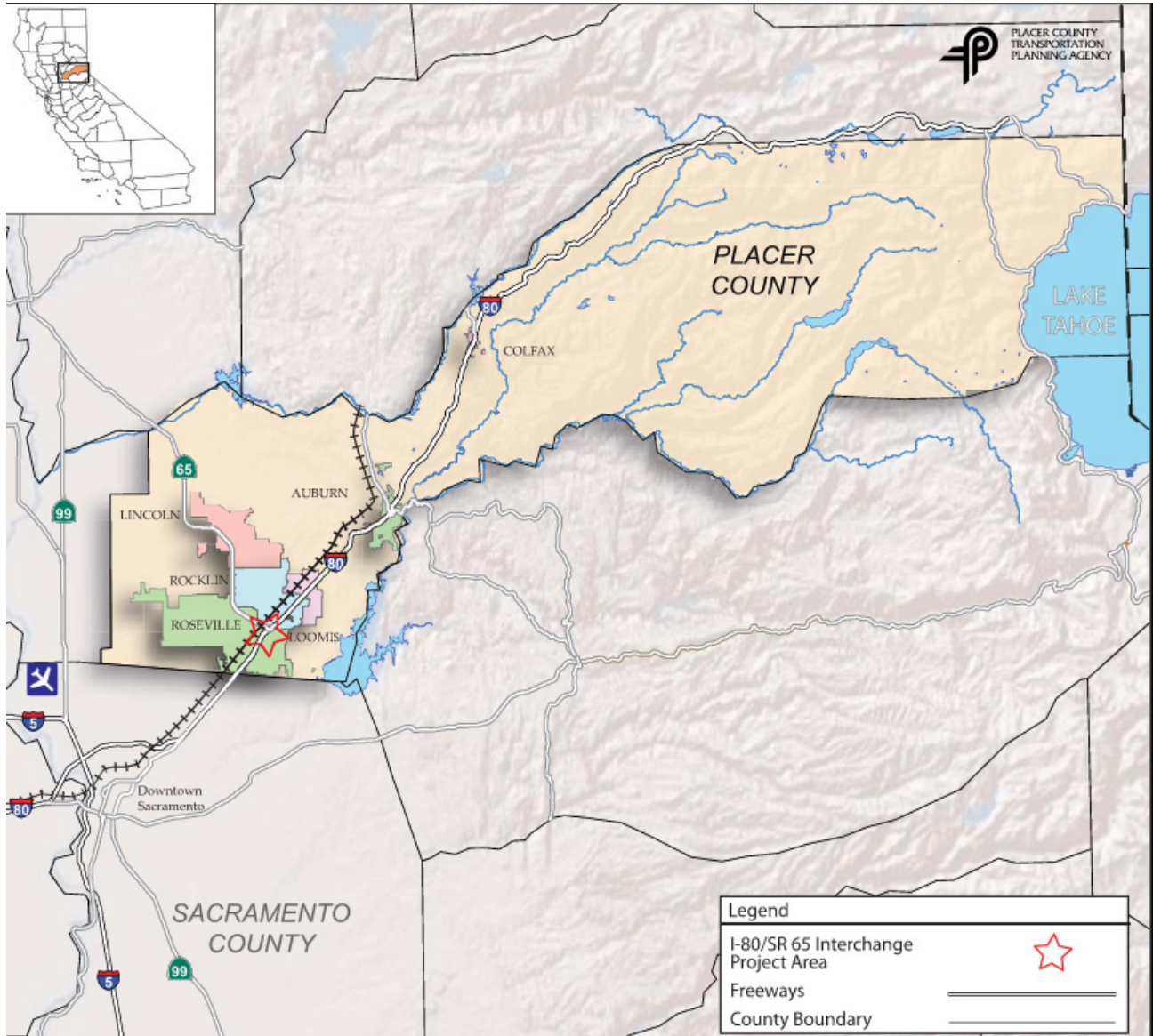
Submit responses to the RFI to: [dmelko@pctp.net](mailto:dmelko@pctp.net)

Phone: (530) 823-4030

## **Project Background**

The I-80/SR 65 interchange is part of the critical I-80 freight corridor in Northern California, connecting the San Francisco Bay Area and the Sacramento region with the Sierra Nevada and beyond. The interchange serves a large and diverse market of truck operators and users, including local, regional, and

long-haul carriers, as well as various industries and sectors that rely on trucking for their supply chains and distribution networks. However, the interchange also faces significant challenges, such as congestion and safety, that affect the efficiency and sustainability of the trucking industry. Moreover, the interchange lacks adequate facilities and services for alternative fuel trucks, such as battery-electric trucks (BETs) and hydrogen refueling infrastructure (HRI), which are expected to play a key role in the transition to zero-emission vehicles (ZEVs) in the trucking sector.



## I-80/SR 65 Alternative Truck Fueling Feasibility Study

To address these challenges and opportunities, the Placer County Transportation Planning Agency (PCTPA) initiated the I-80/SR 65 Alternative Truck Fueling Feasibility Study in 2023. The study, attached, assesses corridor demand, evaluates specific sites for BETCI and HRI, and provides recommendations for potential funding pathways.

## Funding Considerations

PCTPA has a successful track record obtaining State grants for transportation infrastructure projects, having obtained \$180M in the past 4 years. PCTPA may wish to partner, or support interested parties in applying for project funding.

## Alternative Fuel Truck Demand

The attached feasibility study provides the results of a demand assessment using StreetLight software. This can be used as a reference point for interested parties considering how a new BETCI and HRI could be used. Additionally, this RFI process seeks information from fleets and potential offtakers to develop more detailed information about how BETCI and HRI could be utilized.

## Power Considerations

Electrical power is available through Roseville Electric with each site requiring specific upgrades. Gas is provided by PG&E in the area allowing potential microgrid development.

## Section II: Questions for All Respondents

Please answer the following questions based on your organization's perspective and experience. Please provide as much detail and supporting evidence as possible. If a question is not applicable to your organization, please indicate so and explain why.

1. Please provide your name, organization, email address, and phone number.
  - Name
  - Organization Name
  - Email Address
  - Phone #
  
2. Would your organization have any commercial interest in an alternative truck fueling location near the I-80/SR 65 interchange, or along I-80 in Placer County?
  - Yes
  - No





9. What are the expected benefits and challenges of alternative truck fueling for your organization and the broader community? Examples include:
- *Environmental*
  - *Social*
  - *Economic*
  - *Operational*
10. How do you measure or monitor the performance and impact of alternative truck fueling projects or initiatives?
11. What are the main sources of information or guidance that your organization relies on or consults for alternative truck fueling projects or initiatives?

12. How interested and prepared is your organization to apply for or participate in alternative truck fueling projects along I-80? At the I-80/SR-65 interchange?

13. What are the main types of support or assistance that your organization would need from PCTPA or other agencies in applying for or participating in alternative truck fueling projects along I-80?

### **Section III: Questions for Fleets and Potential Offtakers**

1. What are the main drivers and barriers for your organization to adopt zero emission vehicles for trucking along the I-80 corridor?

2. What business models or partnership arrangements would you consider optimal for alternative truck fueling facilities? Examples include:
  - *Offtake agreements*
  - *Ownership Operation*
  - *Maintenance*
  - *Revenue sharing*

3. What is your organization's projected demand for electric charging and hydrogen fueling needs along the I-80 corridor? Please be as specific and detailed as possible.



#### **Section IV: Supplemental Documentation and Information**

Please provide any additional documentation or information that you think would be relevant or helpful for PCTPA to understand your organization's perspective and experience on alternative truck fueling projects or initiatives. This may include, but is not limited to, reports, studies, plans, proposals, presentations, brochures, websites, etc. Please indicate the title, source, and date of each document or information, and provide a summary of its content and relevance.

## **Appendices**

Draft Final I-80/SR 65 Alternative Truck Fueling Feasibility Study