



PLACER PARKWAY
CORRIDOR PRESERVATION

Placer Parkway Corridor Preservation Project

Final Program EIR Certification,

**Adoption of Findings & Statement of
Overriding Considerations,**

**Adoption of Mitigation Monitoring &
Reporting Program, and**

Corridor Selection





PLACER PARKWAY

CORRIDOR PRESERVATION

OVERVIEW



Final Tier 1 EIS/EIR



Corridor Selection



Next Steps



FINAL TIER 1 EIS/EIR



Draft Tier 1 EIS/EIR (Draft) 2007



**Partially Revised Draft
Tier 1 EIS/EIR 2009**



Final Tier 1 EIS/EIR 2009

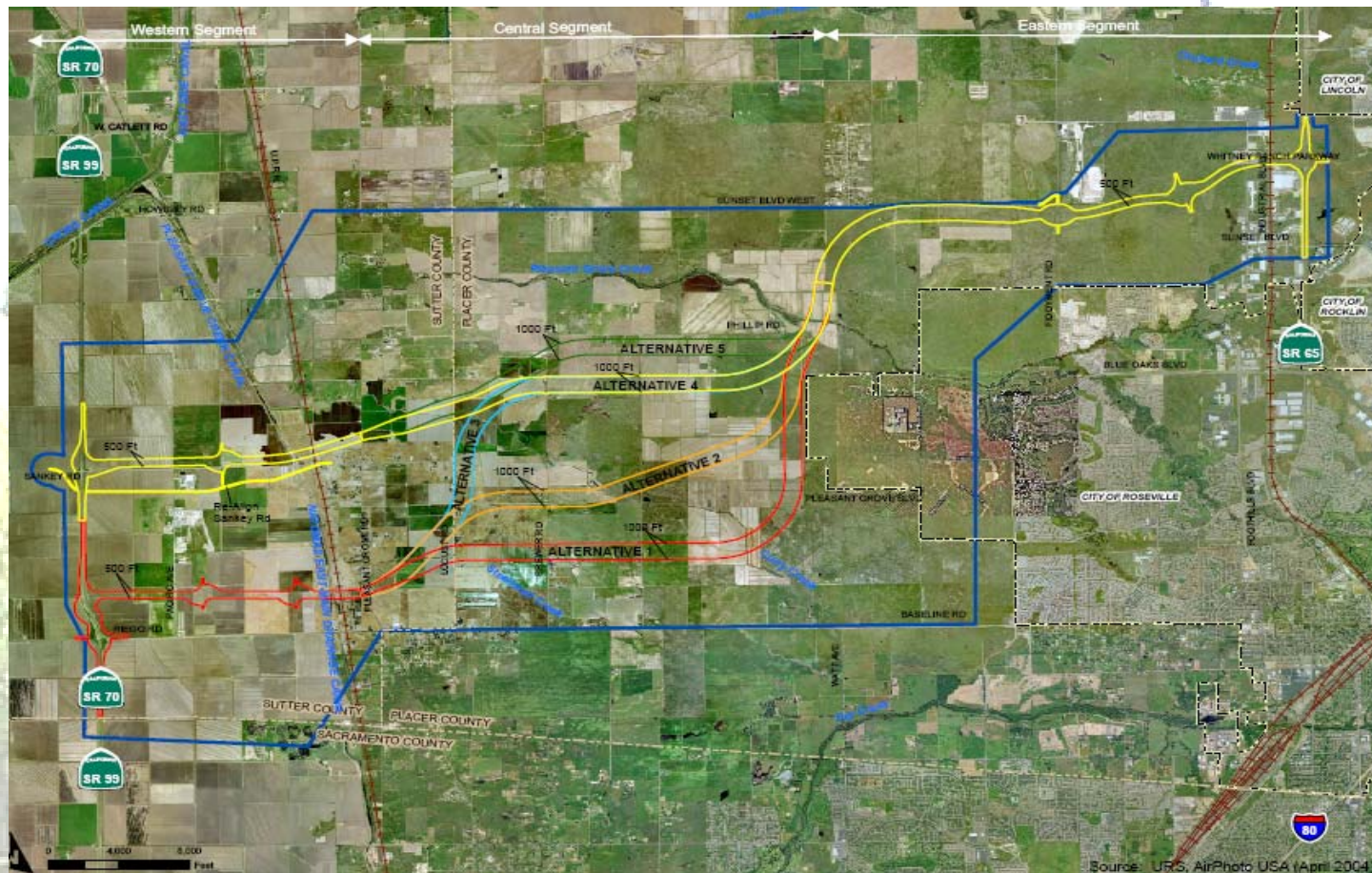
Modified NEPA/404 Process 2003– 2009



PLACER PARKWAY

CORRIDOR PRESERVATION

BUILD ALTERNATIVES



FINAL TIER 1 EIS/EIR



- **Public Comments/Responses**
- **Revisions**
- **Mitigation Monitoring & Reporting Program**
- **Environmentally Superior Alternative & Preferred Alternative**



PLACER PARKWAY
CORRIDOR PRESERVATION

FINAL TIER 1 EIS/EIR



Preferred Alternative is



Alternative 5 with No-Access Buffer

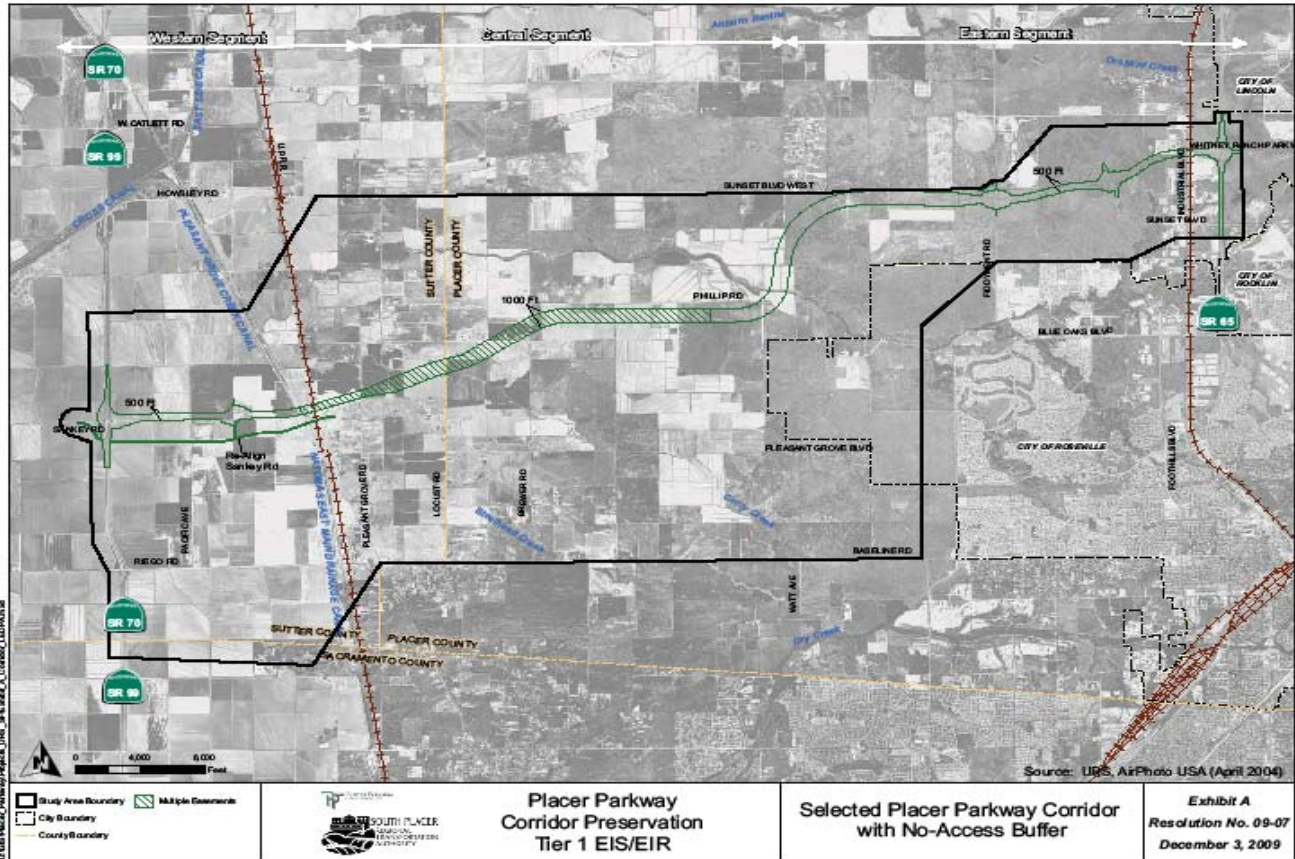
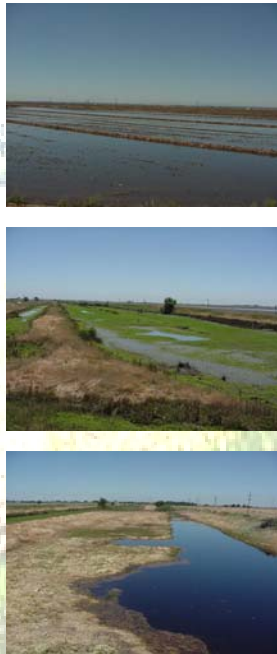




PLACER PARKWAY

CORRIDOR PRESERVATION

PREFERRED ALTERNATIVE



FINAL TIER 1 EIS/EIR

Alternative 5 with No Access Buffer:

- **Fewer Direct/Indirect Impacts**
- **Environmentally Superior Alternative**
- **LEDPA**
- **Least Potential for Inducing Growth**
- **Consistent with PCCP**
- **Shortest**
- **Local Jurisdictions' Preference**





FINAL TIER 1 EIS/EIR

Significant and Unavoidable Impacts



Land Use

Air Quality



Farmland

Noise

Visual & Aesthetics

Cultural Resources

Traffic & Transportation

Biological Resources



Hydrology & Water Quality

Growth

FINAL PROGRAM EIR

Recommended Actions - Resolution 09-06

- Final Program EIR Certification
- Adoption of Findings & Statement of Overriding Considerations,
- Adoption of Mitigation Monitoring & Reporting Program



CORRIDOR SELECTION

Recommended Actions - Resolution 09-07



- **Select Preferred Alternative**
 - **Alternative 5**
 - **No-Access Buffer**
- **Authorize Executive Director to File a Notice of Determination Reflecting This Action**

NEXT STEPS



FHWA Action on Tier 1 EIS



Placer & Sutter Counties GPAs



Commence Tier 2 Work