



WELCOME

Public Hearing on the Partially Revised
Draft Tier 1 Environmental Impact
Statement/Environmental Impact Report

Placer Parkway Corridor Preservation
Project

Yuba City
Feb. 23 – 6:00 p.m.





PLACER PARKWAY

CORRIDOR PRESERVATION

OVERVIEW

- Project background
- Draft Tier 1 EIS/EIR – 2007
- Partially Revised Draft Tier 1 EIS/EIR – 2009
- Next steps





PLACER PARKWAY

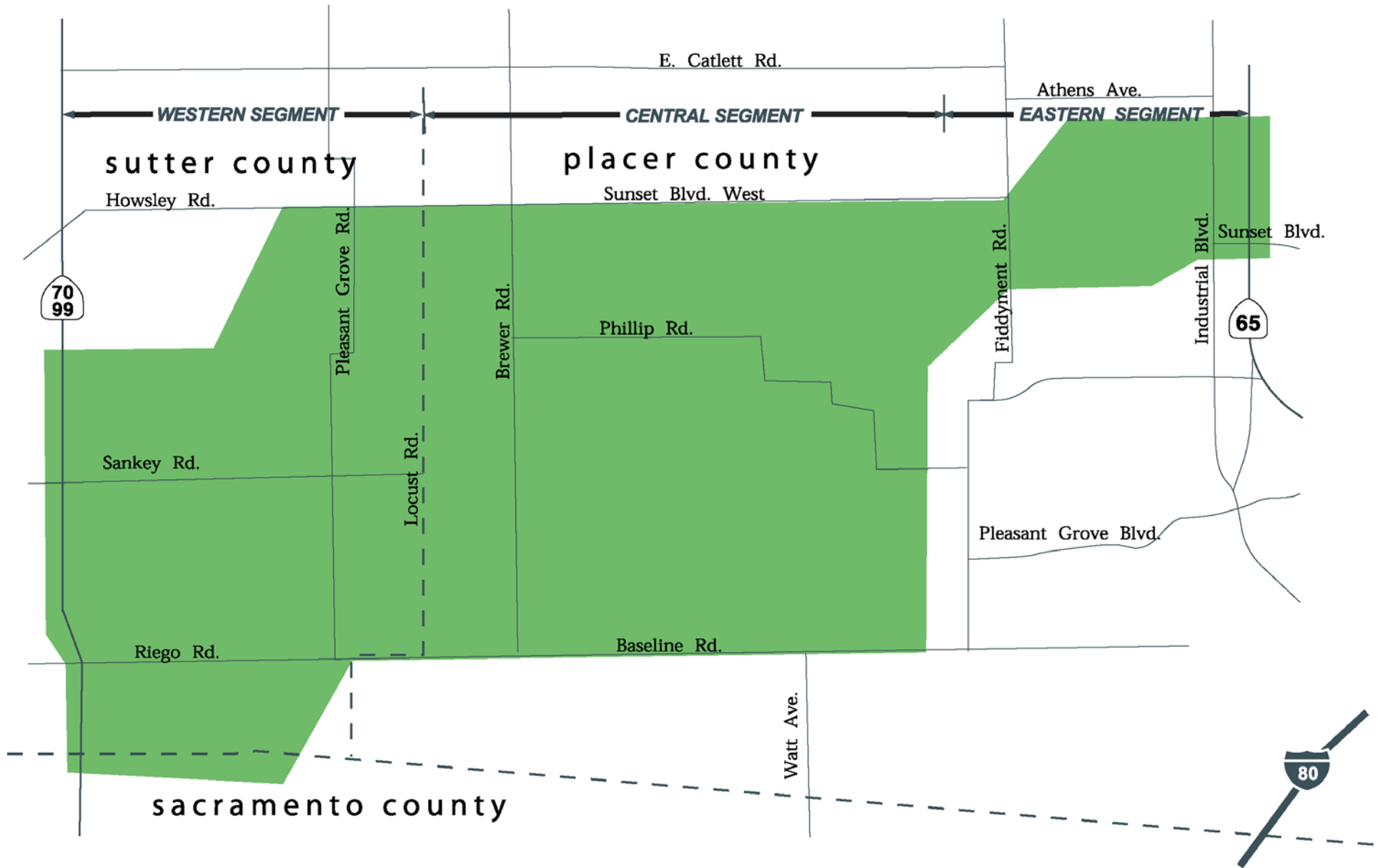
CORRIDOR PRESERVATION

PROJECT BACKGROUND



- High priority regional transportation connection
- Problem (need)
 - Growth and congestion
- Solution (purpose)
 - Preserve ROW for future roadway
- Access & no-development buffer
 - Interchanges
 - No-development

PROJECT STUDY AREA



TIER 1 EIS/EIR PROCESS

- Identification of corridor alignment alternatives (2003-2005)
- Completed Draft Tier 1 EIS/EIR (2007)
- Prepared Partially Revised Draft Tier 1 EIS/EIR (2009)
- Prepare Final Tier 1 EIS/EIR, response to comments and recommend preferred corridor alternative (summer 2009)
- Prepare final project approvals





PLACER PARKWAY CORRIDOR PRESERVATION

DRAFT TIER 1 EIS/EIR – 2007

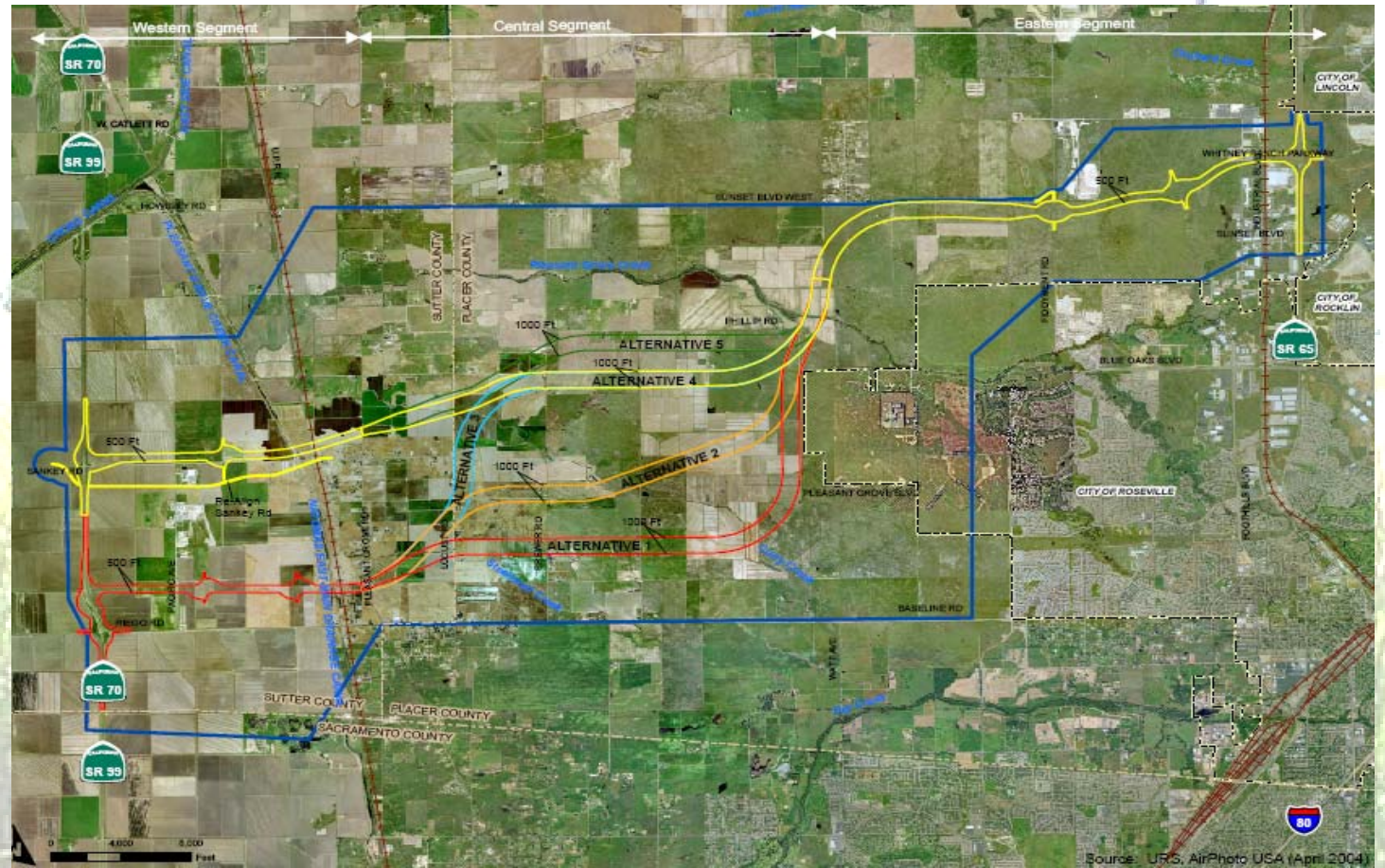
- Analyzed no build and 5 build alternatives
- Conclusions
 - Impacts to nine environmental resource areas
 - Some growth inducement potential
 - Alternative 4 least impacts
- Public hearings and review





PLACER PARKWAY CORRIDOR PRESERVATION

BUILD ALTERNATIVES



Public Hearing

February 23, 2009



PARTIALLY REVISED DRAFT – 2009



- Access & no-development buffer concerns
- SPRTA Board direction
- Comprises:
 - Updates to Draft Tier 1 EIS/EIR
 - Additional analyses



UPDATES

- Land use and farmland data
- Greenhouse gas update
- CEQA evaluation – Environmentally Superior Alternative from Alternative 4 to Alternative 5





ADDITIONAL ANALYSES

- Based on hypothetical scenarios
- Assume no guarantee of buffer or access limitations
- Evaluated
 - Growth inducement
 - Secondary and indirect impacts
 - Cumulative impacts



CONCLUSIONS OF ADDITIONAL ANALYSES

- Growth Inducement
 - Alternative 5 – *less potential growth inducement*
 - Traffic impacts – *free-flowing*
- Secondary and Indirect Biological Impacts
 - Alternative 5 – *least potential indirect biological impacts*
 - Alternative 5 – *less potential fragmentation effects*
- Cumulative Biological Impacts
 - Limited effects; *little difference among alternatives*





NEXT STEPS

- Respond to public comments (2007 & 2009)
- Identify the Preferred Alternative
- Continue agency coordination
- Complete Tier 1 EIS/EIR
- Intention to preserve the selected corridor
- Plan for Tier 2 process





**Thank You
for
Participating!**



Public Hearing

February 23, 2009



FURTHER INFORMATION

- Contact PCTPA, Celia McAdam, Executive Director, 299 Nevada Street, Auburn, CA 95603,
- Tel: 530.823.4030 or email: cmcadam@pctpa.net
- Comments are due: March 16, 2009

