

6.1 Regional Roadways

One of the most important components of the overall transportation system in Placer County is the network of roadways that facilitates the movement of people and goods in and through the region. This chapter identifies those roadways that are of regional significance.

REGIONALLY SIGNIFICANT ROADWAYS

With limited resources for the maintenance and improvement of roadways, priority must be given to those roadways that are most important to the overall transportation system. Roadways are determined to be of regional significance if they meet one or more of the following criteria:

- Roadways of statewide significance
- State or interstate highways
- Rural arterials connecting two or more urbanized areas
- Principal roadways connecting Placer County with other regions or counties
- Roadways that provide access to significant recreational, commercial, industrial, or institutional activity centers
- Roadways that are primary emergency evacuation routes for urbanized areas
- Roadways that would be included in the air quality conformity modeling of the regional transportation network.

Based on the above criteria, there are a variety of roadways of regional significance in Placer County, including one interstate, eight state highways and 14 local road segments. These regionally significant roadways are illustrated in Figures 6.1a, Regionally Significant Roads in Western County, and 6.1b, Regionally Significant Roads in Eastern County, and are described below.

Table 6.1-1 provides an inventory of maintained road miles for all rural and urban roads located within Placer County, excluding that portion of the Lake Tahoe Basin outside of PCTPA jurisdiction.

Table 6.1-1
Maintained Road Miles in Placer County

Jurisdiction		Rural	Urban	Total	Percent
Cities:	Auburn	1.59	60.02	61.61	2.7%
	Colfax	11.74	0.00	11.74	0.5%
	Lincoln	157.17	12.30	169.47	7.5%
	Loomis	0.00	33.67	33.67	1.5%
	Rocklin	11.06	132.83	143.89	6.3%
	Roseville	5.53	422.07	427.60	18.8%
County:	Unincorporated	809.92	133.83	943.75	41.5%
Other:	Army Corps of Engineers	5.50	0.00	5.50	0.2%
	State Highway	112.48	41.85	154.33	6.8%
	State Park Service	9.10	0.00	9.10	0.4%
	US Bureau of Reclamation	0.40	0.00	0.40	0.0%
	US Forest Service	310.88	0.00	310.88	13.7%
Total		1,435.37	836.57	2,271.94	100.0%

Notes:

1. Maintained road miles data is derived from the Highway Performance Monitoring System (HPMS).
2. Road miles for unincorporated Placer County exclude the Tahoe area, based on County GIS data.

Sources:

1. 2008 California Public Road Data, Caltrans, 2009.
2. Phone communication from Jim Rose re: Placer County & Tahoe road miles, Placer County, January 22, 2009.

Significant State Highways

The state highway system is the backbone of the region's roadway system, connecting the major population centers within the county, and connecting the county with the rest of the state. All state highways in Placer County are of regional significance. The state highways in Placer County include:

Interstate 80 (I-80) is a major transcontinental east/west route on the Federal Interstate System that runs in California from its western limits in the San Francisco Bay Area to the eastern California/Nevada Border. It continues eastward outside California toward the northeastern United States and terminates in New Jersey. I-80 is a "High Emphasis" route and has been designated by Caltrans in the Interregional Transportation Strategic Plan as a Gateway for people and freight movement. I-80 is also on the National Highway System (NHS) and the Strategic Highway Network (STRAHNET). The freeway in California is also part of the National Priority Network. I-80 is the predominant commercial and recreational route serving Northern California, the Sacramento Valley, and Southern Oregon. It is a major truck route in California because it is the only all-weather route over the Sierra-Nevada mountain range north of SR58 in Kern County. There is also high seasonal traveler usage from the Bay Area and Sacramento region to the mountain resort communities around Lake Tahoe. In Placer County, I-80 is a six-

lane facility from the Placer / Sacramento County line to the Applegate/Weimar area, where it decreases to 4 lanes to the Nevada County line.

State Route 20 (SR20) is an “ocean to mountains” route which begins at SR 1 near Fort Bragg and ends at I-80 near Emigrant Gap, weaving into Placer County just east of Blue Canyon. SR 20 is predominantly a two-lane conventional facility that serves regional, commercial, agricultural and recreational traffic and interconnects with major routes such as I-5, SR99, SR70, and I-80. SR20 is a “High Emphasis Focus Route.”

State Route 28 (SR28) extends 11 miles from SR89 at Tahoe City to Kings Beach, where it intersects SR267, and to the California/Nevada border. This route is a two to four lane conventional highway serving recreational traffic along the North Shore of Lake Tahoe, and is on the Federal Aid Primary (FAP) system. It is located outside of PCTPA’s planning area.

State Route 49 (SR49) is a north/south route connecting Auburn with numerous “gold country” communities in the foothills. At the south end is a connection across the American River to El Dorado County, and at the north end is a connection across the Bear River to Nevada County. It is a major arterial for both local and through traffic in these foothill counties. In fact, the portion of SR49 between I-80 in Auburn and SR 20 in Grass Valley is identified as a High-Emphasis Focus Route and as a high-growth rural and recreational route. SR49 is a city street with turn lanes and traffic signals in central Auburn. The segment of SR49 south of I-80 has been relinquished by the State to the City of Auburn.

State Route 65 (SR65) runs north/south connecting I-80 to Lincoln and Marysville. The route currently includes 4-lane freeway segments between I-80 and Industrial Boulevard, just south of Lincoln and between Beale Air Force Base north of Wheatland to SR70 south of Marysville. The remainder of SR65 is a 2-lane highway.

State Route 89 (SR89) in Truckee and unincorporated Placer County serves as a key facility for interregional travel, providing the transition between I-80 and the primary access to the Tahoe Basin’s North Shore, as well as Squaw Valley and Alpine Meadows. SR89 also serves as a key “gateway” to the Tahoe Region and to Truckee.

State Route 174 (SR174) extends 13.1 miles northward from I-80 near Colfax in Placer County to SR 20 in the City of Grass Valley in Nevada County. SR174 is largely used by commuters between Auburn and Nevada County as a bypass to avoid congestion on SR49. The route passes through mountainous terrain with grades of up to 8.8 percent. SR174 is on the FAP system and is not on the National Truck Network or Interregional Road System.

Figure 6.1a
Regionally Significant Roads - Western County

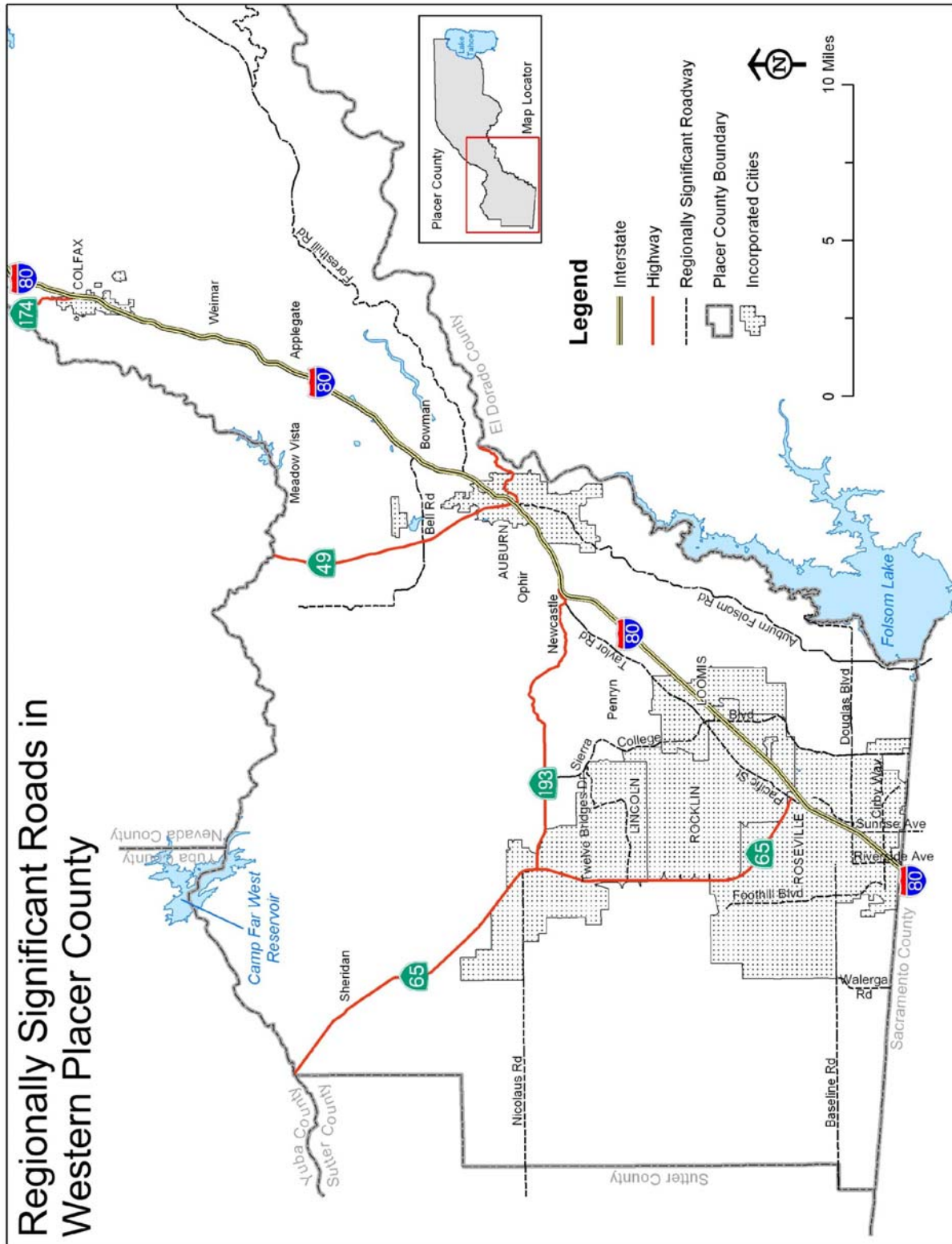
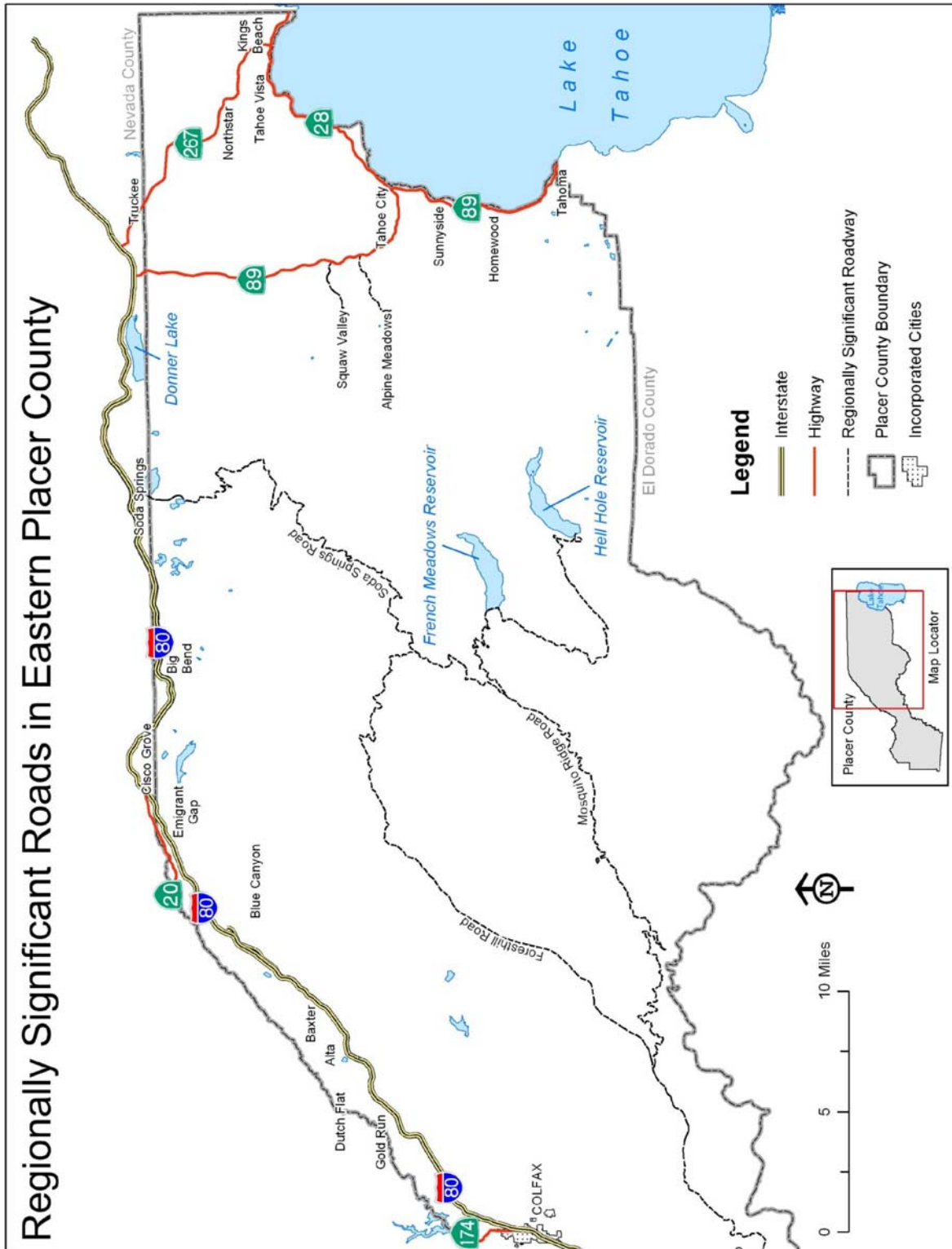


Figure 6.1b
Regionally Significant Roads – Eastern County



State Route 193 (SR193) is a connector road running between Placerville on US Highway 50 and the City of Lincoln on SR65. North of Placerville the route leaves SR49 to serve the communities of Kelsey, Spanish Flat, and Georgetown until connects to the town of Cool and SR49 again. At this point the designation is abandoned in favor of SR49 until it reaches I-80. The road then travels west from Newcastle to the City of Lincoln and the connection to SR65. SR193 serves as a truck route and connector road between I-80 and SR65.

State Route 267 (SR267) is a north-south undivided two-lane conventional highway approximately 13 miles in length that connects I-80 near Truckee in Nevada County to SR28 near Kings Beach. The route is of local and regional significance providing access to residential, industrial, commercial and recreational land uses and serves inter-regional, local commuter, and recreational traffic traveling between the Tahoe Basin, Martis Valley, Truckee and I-80.

Significant Local Roads

Local roads provide comprehensive access to all areas of Placer County, and each is important to those using it. Local streets and roads account for about 80 percent of the total Placer road network and carry about 46 percent of total traffic in 2008.

The RTP, however, seeks to identify those local roads which are of regional significance, connecting population centers with significant recreational, commercial, industrial, or institutional activity centers. These roads often serve as alternate parallel routes to congested freeway corridors. The regionally significant local roads in Placer County include:

Sierra College Boulevard: The segment of Sierra College Boulevard between SR193 and I-80 is a regional transportation route between the Rocklin and Loomis area to Lincoln and the agricultural areas to the north and east. The segment between I-80 and the Sacramento County Line is a regional transportation route connecting I-80 to the easterly portion of Roseville, Granite Bay area and Sacramento County. Sierra College Boulevard also connects Sierra College to I-80 and Roseville and Granite Bay areas. The entire segment between I-80 and Highway 50 serves as a defacto north-south beltway connector.

Pacific Street/Taylor Road: From I-80 to SR193 this segment serves as a major arterial connecting Newcastle and Roseville. Known as Pacific Street within Roseville and Rocklin, it is a two and four lane facility extending through the Town of Loomis where it becomes Taylor Road, connecting to I-80 in Newcastle. This road was previously a portion of the historic Lincoln Highway (Route 40) prior to the establishment of I-80.

Auburn-Folsom Road: From Auburn to Sacramento Line, this is a regional transportation route connecting Auburn to Granite Bay area, City of Folsom and northeastern Sacramento County. It is one of three main routes crossing the American River to Highway 50.

Douglas Boulevard: From Sierra College Boulevard to Folsom Lake, this is a regional transportation route connecting Roseville and I-80 with the community of Granite Bay and the Folsom Lake Recreation Area at Granite Bay.

Sunrise Avenue: From Eureka Road to Sacramento County line, this is a regional transportation route connecting Roseville with Sacramento County.

Cirby Way: From Rocky Ridge Drive to Foothills Boulevard, this is a major arterial connecting southwest Roseville to I-80 via Riverside Avenue and to northwest Roseville via Foothills Boulevard.

Foothills Boulevard: From Cirby Way to north of Blue Oaks Boulevard, this is a major arterial connecting southwest Roseville to northwest and north central Roseville.

Riverside Avenue: From Vernon Street to Interstate 80, this is minor arterial connecting downtown Roseville to I-80.

Baseline Road: From Foothills Boulevard to the Sutter County Line, this is a primary commercial connector and commuting route from Roseville to SR70 and SR99, Sacramento and the Sacramento Airport. At the Placer / Sutter County line, Baseline Road becomes Riego Road.

Walerga Road: From Baseline Road to Placer County Line, this is a primary connector between Roseville and the north area of Sacramento County and serves as a connection to I-80.

Nicolaus Road: From H Street in Lincoln to Sutter County Line, this is a two to four lane arterial serving the Lincoln Regional Airport, a designated “reliever airport” to Sacramento International Airport.

Twelve Bridges Drive: From Sierra College Boulevard to SR65 and Industrial Boulevard, this is a two and four lane arterial approximately four miles in length. This roadway serves the southern portion of Lincoln.

Bell Road: From SR49 to I-80, this is a bypass route for commute traffic heading from I-80 to North Auburn area and Nevada County. Bell Road also serves the Auburn Airport Industrial Area, the Placer County DeWitt Center government complex, and I-80.

Foresthill Road: From I-80 to Foresthill, this is a connector route for the community of Foresthill to Auburn, I-80 and the Sacramento Area. It also provides significant access to recreational opportunities in the Sierras.

REGIONAL ROAD NETWORK AND LEVEL OF SERVICE

Level of service (LOS) is used to express the traffic flow conditions of a road segment in relation to the capacity of the roadway. Level of service generally describes traffic conditions in terms of speed and travel time, volume and capacity, traffic interruptions, and safety. Level of service uses the letters “A” through “F” to describe traffic flow, with “A” being free flow and “F” being gridlock. Table 6.1-2 provides specific descriptions of level of service.

Each jurisdiction establishes level of service standards for roadways within the Circulation Element of their general plan. SACOG uses the level of service standards established in the general plans for the current and future congestion analysis prepared as part of the SACOG Metropolitan Transportation Plan (MTP). Caltrans use concept LOS to reflect the minimum level or quality of operations that is acceptable for each State highway within the 20-year planning horizon.

**Table 6.1-2
Level of Service Descriptions**

Level of Service	Description
A	Represents free flow. Individual users are virtually unaffected by the presence of others in the traffic stream.
B	Stable flow, but the presence of others in the traffic stream begins to be noticeable.
C	Stable flow, but marks the beginning of the range of flow in which the operation of individual users becomes significantly affected by the interactions with others in the traffic stream.
D	Represents high density, but stable flow.
E	Represents operating conditions at or near the capacity level.
F	Represents forced breakdown of flow.

Source: Highway Capacity Manual – Special Report 209, Transportation Research Board, 1985.

Regional Road Network Level of Service Analysis

SACOG uses the SACSIM transportation model to evaluate current and future travel demand conditions on regionally significant roadways in the Sacramento metropolitan area, including Placer County. A description of the SACSIM transportation model is provided in Appendix I.

The purpose of the level of service evaluation is to identify current roadway deficiencies and to identify segments of the regional road network that may become congested in the future as a result of growth during the twenty-year horizon of the Plan. Any current roadway deficiency identified by this analysis may become the basis for a project, while segments of the road network forecast to have a congestion problem in the future may be known and monitored by the appropriate jurisdiction as development occurs.

For those congestion impacts forecast to occur on State Highway routes, PCTPA and Caltrans will be responsible for monitoring the levels of service over time, in addition to any project development. For those congestion impacts forecast to occur on county or city roads, the appropriate local jurisdiction will be responsible for monitoring traffic levels and the development of any corrective project.

Appendix J summarizes current (2008) rural and urban daily vehicle miles of travel (VMT) by road functional classification. Placer County has about 2,384 total maintained road miles, with rural roads comprising 65 percent of the total and urban 35 percent. Not surprisingly, the miles

traveled on these roads is nearly the reverse, with 64 percent of travel occurring on urban roads and 36 percent on rural roads.

Appendix J also summarizes highway congestion data (2008) for state highways in Placer County. Placer County currently experiences 8.3 total congested directional miles. Morning congestion is spread along westbound I-80 and southbound SR65; evening congestion occurs along both eastbound and westbound I-80 south of SR65. Users experienced about 502 daily vehicle hours of delay. Placer County ranks 19th statewide among counties in terms of congestion experienced on state highways.

Appendix K lists current (2007) traffic data and performance measures for several key roadway segments in Placer County. Appendix L lists forecasted traffic data and performance measures for similar key segments.

Placer Parkway Final Tier 1 EIS / Program EIR

The Placer Parkway Final Tier 1 EIS / Program EIR include several mitigation *considerations* that are different from several proposed RTP projects identified in Table 6.1-3. These *considerations* outline “strategies” that go beyond the 2035 horizon of the RTP; mitigating year 2040 LOS impacts on the following road segments:

- Widen Fiddymment (Blue Oaks to Roseville city limits) to six lanes. PLA25130 proposes widening of Fiddymment from two to four lanes from Roseville city limits to Athens Road.
- Widen Whitney Ranch Parkway (SR65 to University Avenue) to eight lanes. PLA25025 proposes constructing a new six lane facility from SR65 to Wildcat Boulevard. The PSR/PR for the SR65/Whitney Ranch Parkway interchange also indicates this segment is to be eight lanes (six lanes plus two auxiliary lanes).
- Widen Valley View Parkway (Sierra College Boulevard to Park Drive) to four lanes. PLA19250 proposes constructing a two lane Valley View Parkway.
- Widen Sierra College Boulevard (Valley View to English Colony Way) to six lanes. PLA19330 proposes widening of Sierra College Boulevard to four lanes from Valley View to Loomis town limits.

REGIONAL ROADWAY NETWORK NEEDS ASSESSMENT

High Priority Regional Road Network Projects

The level of service analysis prepared for the regional road network is only one factor considered in prioritizing the region’s project priorities. Other primary and secondary criteria must be considered in establishing the project priorities for the region. Primary criteria include safety

improvements, air quality conformity, eligibility for state and federal funding, and local funding availability. Secondary criteria include project state of readiness and popular and community support.

Based on these criteria, PCTPA has identified several high priority regional roadway projects that are needed in Placer County within the planning period of this Plan. Each of these projects is considered a necessary improvement that will maintain acceptable levels of service and safety on the regional road network. These projects are shown in Figure 6.1c, Regionally Significant Roadway Projects in Western County, and Figure 6.1d, Regionally Significant Roadway Projects in Eastern County.

Examination of the regional project priority list shows that funding is an important determining factor in their implementation. A forecast of future State, federal, and local funding is included in the Financial Element. Obtaining the funding necessary for the high priority regional road network projects will be one of the greatest challenges for long range planning.

Interstate 80 Capacity Increasing Project

The traffic demand on the I-80 freeway corridor impacts the freeway to a point of operational breakdown during the peak periods. This proposed project would consist of adding one lane in each direction on I-80 from the Sacramento / Placer County line to approximately one half mile east of the SR65 connector and the addition of auxiliary lanes. The total cost of this project over three phases is estimated to be \$91 million.

PCTPA and SACOG jointly examined the feasibility of implementing a system of High Occupancy Toll (HOT) lanes on the I-80 corridor, between I-5 and SR65 as a pilot project. HOT lanes are based on the strategy of allowing single occupant vehicles to use the extra capacity in a high occupancy vehicle (HOV) lane, and generating revenue through the tolls charged on the single occupant vehicles. The feasibility study was completed in July 2010. The feasibility study concluded that implementation of a HOT lane on I-80 from I-5 to SR 65 will not provide sufficient gross revenue to cover its costs through 2035. Between 2026 to 2035, gross revenues may be able to cover operations and maintenance costs but not capital and financing costs.

Interstate 80 Ongoing Highway Operations Improvements

In addition to using State Highway Operation and Protection Program (SHOPP) funds, Caltrans implements ongoing maintenance and safety improvement projects annually on Interstate 80 throughout Placer County. Spread over a number of projects and phases, the total cost for ongoing highway operational improvements along the entire length of I-80 in Placer County is estimated to be \$657 million.

Interstate 80 / Rocklin Road Interchange

In Rocklin, from Rocklin Road onto both westbound and eastbound I-80, the project would involve construction of a combination of loop and flyover ramps to eliminate left-turn movements. The project is estimated to cost about \$30 million.

Interstate 80 / Eureka Boulevard Interchange

In Roseville, on Eureka Road at I-80 the project would add a fourth westbound through lane from 500 feet east of North Sunrise to the eastbound I-80 on-ramp. The project also includes widening Miners Ravine Bridge and changing the existing first north bound and southbound through lanes at Sunrise Boulevard and Eureka Boulevard to left turn lanes. The estimated cost of the project is about \$10 million.

State Route 65 / Lincoln Bypass

The proposed project is a westerly bypass along SR65 around the City of Lincoln. The project consists of a roughly 12-mile mixed two-and and four-lane facility extending from Industrial Boulevard in Lincoln to just north of Sheridan. The most current estimate prepared by Caltrans puts the total cost for this project at approximately \$292 million, including right-of-way, design, and construction, with the second phase from North Ingram Slough to Sheridan at \$55 million.

State Route 65 Widening from Industrial to Interstate 80

This project would widen SR65 to six lanes in the rapidly growing area on the border between Rocklin and Roseville, 6.5 miles from the Galleria Boulevard interchange to the Industrial Avenue interchange. This project is estimated to cost about \$109 million.

State Route 65 / Interstate 80 Interchange Modifications

This project would improve about three miles of I-80 between Miners Ravine Bridge to approximately 0.2 mile west of Rocklin Road and would improve about two miles of SR65 between the I-80 junction to approximately one mile to the north of Galleria Boulevard. The proposed project improvements include construction of a two-lane bi-directional HOV direct connector on eastbound I-80 to northbound SR65 and southbound SR65 to westbound I-80; replacement of the eastbound I-80 to northbound SR65 loop connector with a three-lane flyover ramp; ramp widening and additional lane at the southbound SR65 on-ramp from Galleria Boulevard; connector widening with associated auxiliary lane at the westbound I-80 to northbound SR65 connector; reconstruction and widening of the southbound SR65 to eastbound I-80 connector flyover; widening of I-80 and SR65 and associated ramp realignments at Eureka Road, Taylor Road and Galleria Boulevard; widening the East Roseville Viaduct; replacement of the Taylor Road overcrossing to accommodate widening I-80; and construction of HOV lanes on SR65 from the I-80/SR 65 interchange past the Galleria Boulevard interchange. Phase 1 of the project is estimated at \$30 million, with the ultimate project estimated at \$250 million.

State Route 65 / Ferrari Ranch Road Interchange

In Lincoln, the project involves construction of an interchange at SR65 / Lincoln Bypass at estimated at \$15 million.

State Route 65 / Whitney Ranch Parkway Interchange

Construction of a full movement interchange at Whitney Ranch Parkway and SR65 is proposed at an estimated cost of \$20 million.

State Route 65 / Sunset Boulevard Interchange

West of Rocklin, at the junction of SR65 and Sunset Boulevard, the project involves construction of an interchange for \$34 million.

State Route 65 / Galleria Boulevard Interchange Improvements

At the existing interchange on SR 65/Galleria Boulevard and Stanford Ranch Road in Roseville, modification of all on and off ramps on the interchange is proposed to provide improved operations. The estimated cost of the improvements is \$5 million.

State Route 49 Widening

This project would consist of widening SR49 between Luther Road and Nevada Street at an estimated cost of \$10 million.

Sierra College Boulevard Improvements

The improvements to Sierra College Boulevard would consist of widening the roadway to four or six lanes, including shoulder improvements, from SR193 to the Sacramento County line, and reconstructing the interchange at I-80. Various studies prepared for the project conclude that the total cost of all proposed improvements would be approximately \$43 million.

Auburn-Folsom Road Widening

The project involves shoulder widening capacity improvements, safety improvements and installation of a traffic signal at Fuller Drive for about \$28 million

Figure 6.1c
Placer Parkway Preferred Alternative

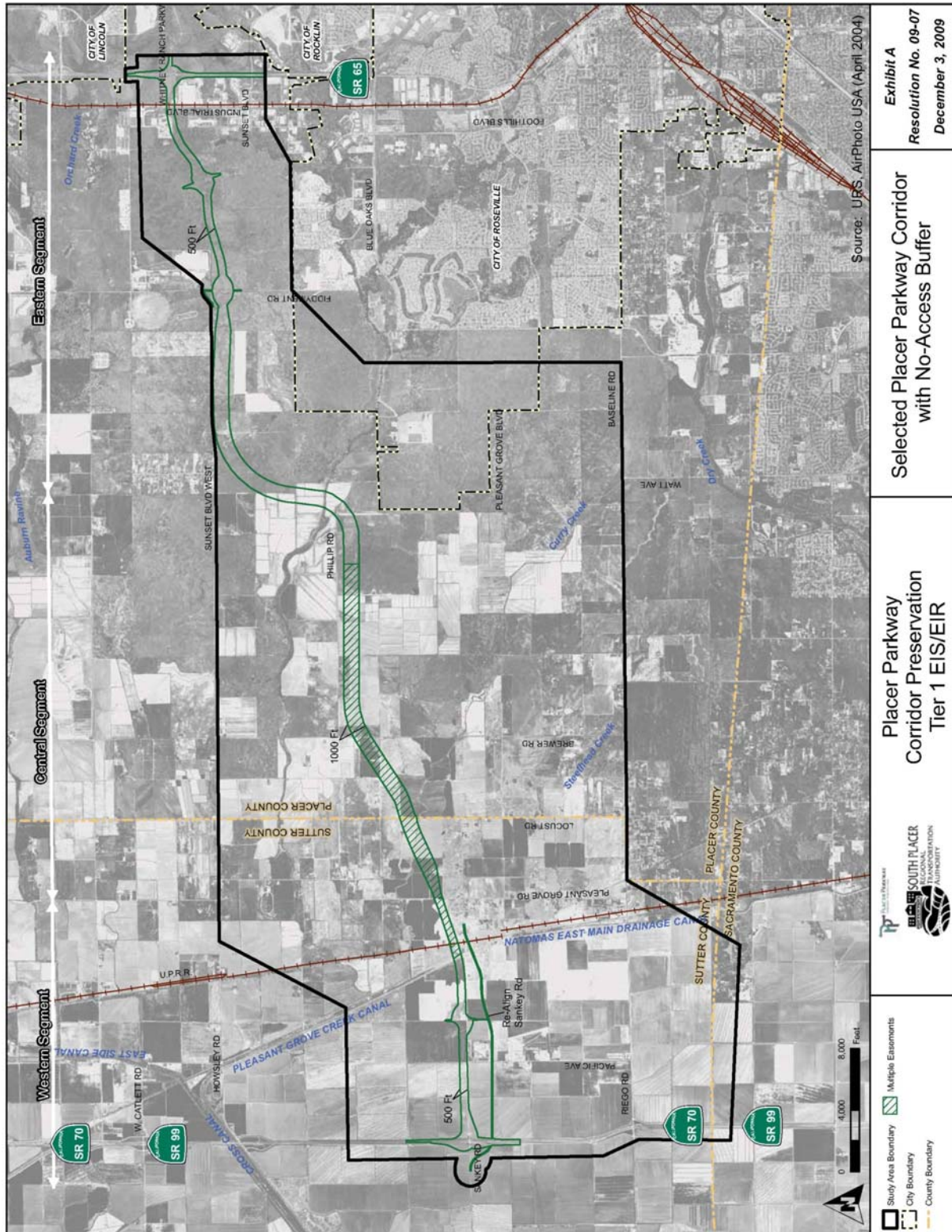


Exhibit A
Resolution No. 09-07
December 3, 2009

Selected Placer Parkway Corridor
with No-Access Buffer

Placer Parkway
Corridor Preservation
Tier 1 EIS/EIR



Multiple Easements
Study Area Boundary
City Boundary
County Boundary

Placer Parkway

The concept of a transportation facility that would connect SR65 to SR 70/99 has been discussed for decades. Five corridor alignments alternatives were evaluated in a Tier 1 EIS/Program EIR. The Final Tier 1 EIS / Program EIR identified Alternative 5 with a no-access buffer as the Preferred Alternative under NEPA and the Environmentally Superior Alternative under CEQA. In December 2009, SPRTA selected Alternative 5 with a no-access buffer as the Preferred Alternative. Through a parallel federal coordination (modified NEPA/404) process, the USCOE and USEPA concurred on the Preferred Alternative. FHWA issued the Record of Decision on May 7, 2010. The corridor is illustrated in Figure 6.1c; and is about a 15-mile long, four-lane facility, connecting from SR 65 at Whitney Boulevard / Sunset Boulevard to SR 70/99 between Riego Road and Sankey Road in Sutter County. The total estimated cost of the Placer Parkway project ranges from \$660 million. Phase 1 will include a Tier 2 Project Level environmental review and permit process and will identify a roadway alignment within the corridor at an estimated cost of \$70 million. The SPRTA has designated Placer County as the lead agency for the project level environmental and design work.

State Route 89 Improvements

Rehabilitation improvements are proposed along SR89 from Squaw Valley Road to the Nevada County line in Truckee. The rehabilitation improvements are estimated to cost about \$9 million.

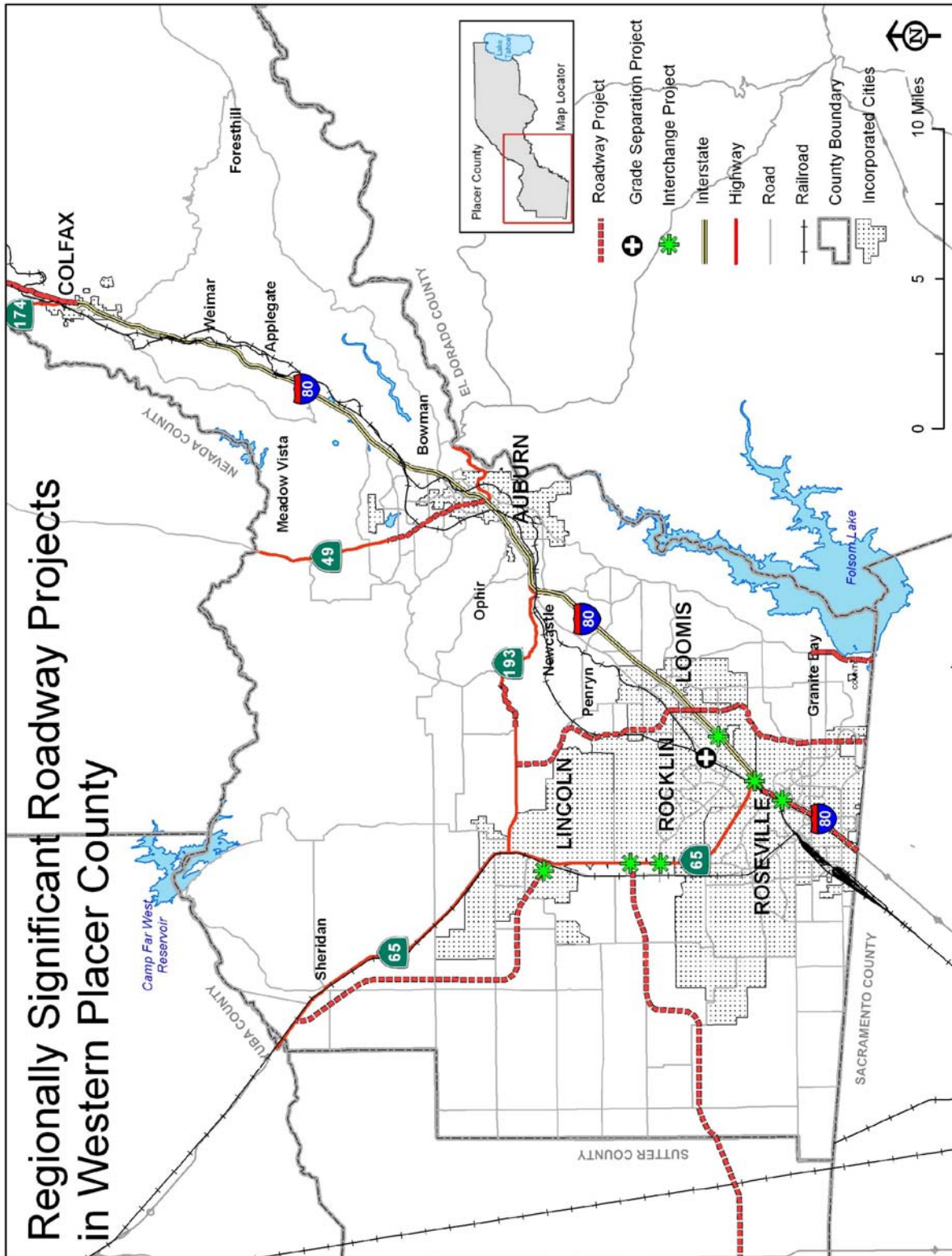
State Route 193 Improvements

A variety of improvements are proposed by Caltrans over the next several years for SR193. These include widening SR193 from Ferrari Ranch Road to Sierra College Boulevard at an estimated cost of \$6 million. Other significant projects include reconstruction of the bridge at Auburn Ravine at a cost of \$5 million; improvements to the roads curves at an estimated cost of \$13 million; and pavement rehabilitation along segments at an estimated cost of \$5 million.

Midas Avenue Grade Separation

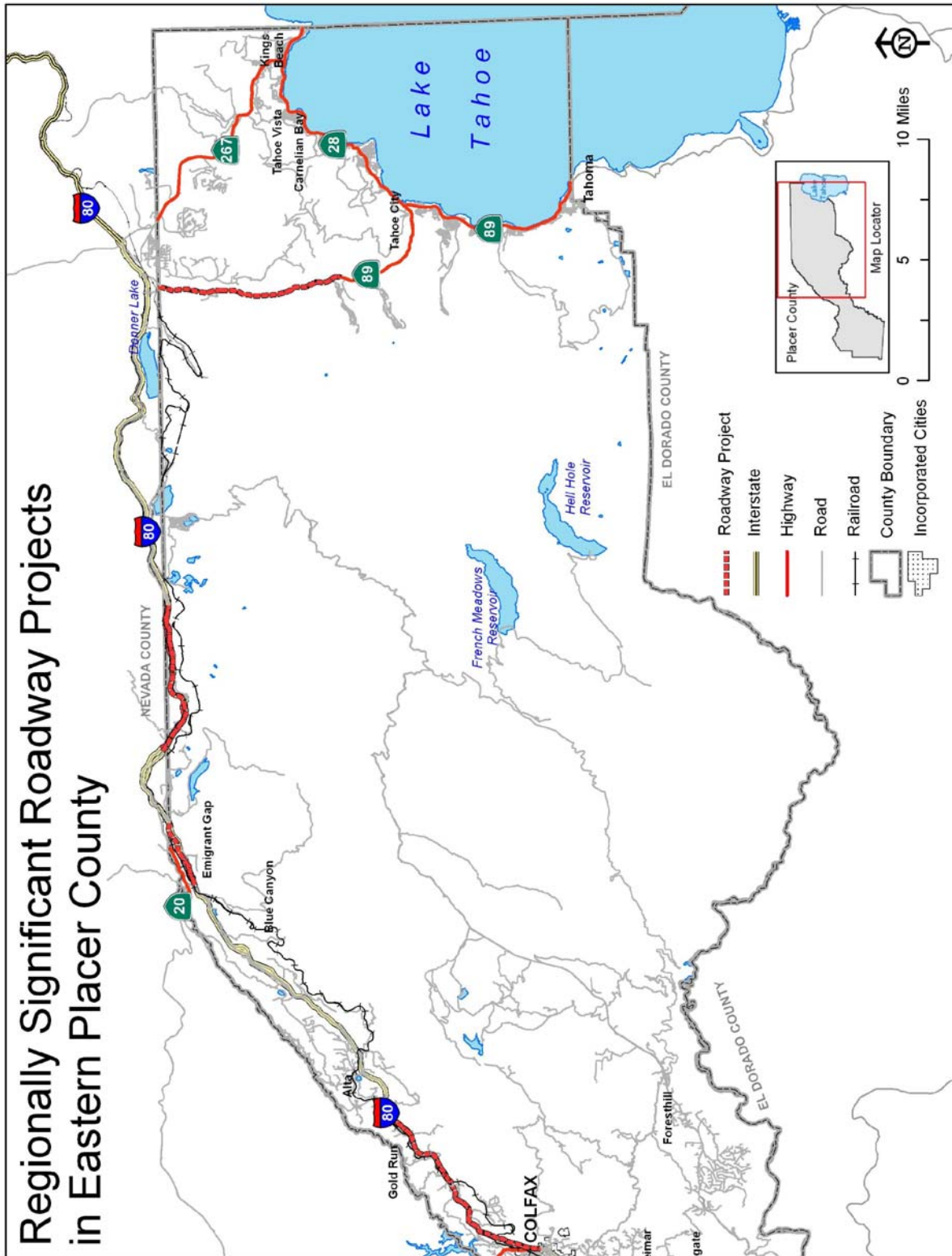
In Rocklin, the project would involve construction of a two-lane grade separation of UP railroad tracks on Midas Avenue, from Pacific Street to Third Street, construct 2 lane grade at an estimated cost of \$9 million. Project is identified on the California Public Utilities Commission (CPUC) grade separation priority list.

Figure 6.1d
Regionally Significant Roadway Projects – Western County



Regionally Significant Roadway Projects
in Western Placer County

Figure 6.1e
Regionally Significant Roadway Projects – Eastern County



Currently Programmed Roadway Projects

Through previous State Transportation Improvement Program (STIP) cycles, Placer County has received funding approval for a number of projects scheduled for the short-range (less than 10-year). Existing programmed projects include roadway improvements and rehabilitation proposed by Placer County jurisdictions funded using RSTP and ARRA, as well as safety projects included in the Caltrans State Highway Operations and Protection Program (SHOPP).

In 2002, Lincoln, Roseville, Rocklin, and Placer County formed the South Placer Regional Transportation Authority (SPRTA), which is a regional fee program administered by PCTPA. This fee program is generating additional funds to pay for improvements on Sierra College Boulevard, Interstate 80 interchanges, the Lincoln Bypass, Placer Parkway, and selected rail and transit projects.

A partial list of key regional roadway improvement projects programmed in the STIP and the MTIP is included in Table 6.1-3.

Table 6.1-3
Programmed Regional Roadway Improvement Projects

Project Title	Completion Year	Status	Cost Estimate
I-80 Eureka Road On-Ramp Improvements	2011	Programmed	\$9,600,000
I-80 HOV Lanes & Aux Lanes - Phase 3	2012	Programmed	\$33,848,000
I-80 Operational Improvements/HOV - Phase 2	2012	Programmed	\$47,576,532
I-80 Maintenance in Placer County	2012	Programmed	\$6,165,500
I-80 Rehabilitation - SHOPP Auburn-Folsom Road Widening	2012	Programmed	\$27,300,000
Ferrari Ranch Road at SR65 Bypass	2012	Programmed	\$14,495,628
I-80 Rehabilitate Bridge Decks Near Roseville	2013	Programmed	\$16,184,000
SR193 Curve Improvement	2014	Programmed	\$12,586,000
Whitney Ranch Parkway Interchange	2014	Programmed	\$20,000,000
SR65 Lincoln Bypass	2014	Programmed	\$291,783,000
I-80 Vertical Clearance Improvements	2015	Programmed	\$36,045,000
Galleria Blvd/SR65 Interchange Improvements	2015	Programmed	\$5,000,000

(Phase 2)			
SR89 Rehabilitation	2016	Programmed	\$8,870,000
I-80 3-Mile Truck Climbing Lane	2018	Programmed	\$31,600,000
I-80 / Rocklin Road Interchange	2020	Programmed	\$29,850,000
Midas Avenue Grade Separation	2020	Programmed	\$8,750,000
Sierra College Boulevard (All Segments)	2020	Programmed	\$42,500,000
SR65/I-80 Interchange Improvements (Phase 1)	2020	Programmed	\$30,000,000
Total Programmed Funds			\$640,668,660

Note: Cost are estimates are in current year dollars, and are based on the latest information available, however unanticipated factors such as environmental issues, land prices, etc. often conspire to escalate costs.

Sources: 2010 State Transportation Improvement Program; SACOG 2009/2012 MTIP, as amended; SACOG 2011/2014 MTIP; and South Placer Regional Transportation Authority (SPRTA) project list.

A comprehensive list of programmed and planned road, bridge, and grade separation projects, funded with STIP, SHOPP, SPRTA, local fees, developer fee/agreements, Hazard Elimination and Safety Program (HES), Highway Bridge Rehabilitation and Replacement Program (HBRRP) and other programs currently included in the approved MTP and programmed in the MTIP, are identified in the Roadway Projects section, below in Table 6.1-4.

State Highway Needs Assessment

Caltrans is required to prepare the SHOPP for rehabilitation and reconstruction of all State highways and bridges, and to set goals for each program type. The SHOPP is updated every two years. The SHOPP's statewide pavement performance goal is to reduce distressed lane miles by a reduction from 25 percent of the network needing rehabilitation to no more than 10 percent throughout the State by 2015/2016. Each District develops a ten-year goal to identify project needs and priorities to achieve its portion of the statewide goal. Caltrans is also required to prepare a five-year Maintenance Plan to address the maintenance needs of the State highway system.

Caltrans District 3 has a district wide total of 4309 highway lane miles, with 1349 or 31 percent falling in the distressed category. The distressed category can be broken down as follows: 76.1 percent of State highway lane miles in major structural distress, 23.1 percent in minor structural distress, and 0.9 percent having a poor ride quality. Caltrans expects the number of highway lane miles with distressed pavement to increase significantly over the next decade. Because of limited financial resources, it will likely be necessary for Caltrans to focus its pavement maintenance resources on the highways with the most critical needs, allowing some highways to have poorer pavement and ride quality than travelers have been accustomed to in years past.

Local Streets and Roads Needs Assessment

The recent California Statewide Local Streets and Roads Needs Assessment Final Report (October 2009) uses the Pavement Condition Index (PCI) as an indicator of the type of repair work that will be required for roads. The reported PCI is a weighted average, meaning there may well be pavement conditions that have a rating above or below. Pavement conditions can be skewed due to the larger percentage of new roads with higher PCIs, built over the last several years as part of new development.

Newly constructed road pavement has a PCI of 100. In the first five years of a road there is a slow and gradual deterioration of its pavement. As more time passes, pavement deterioration begins to accelerate. As the pavement deteriorates, treatments are needed to address structural adequacy. Asphalt concrete (AC) overlays are applied at varying thicknesses. When the pavement has failed, reconstruction is required. If pavement repairs are delayed by just a few years, the costs of proper treatment may increase significantly, as much as ten times.

The recent California Statewide Local Streets and Roads Needs Assessment Final Report forecast average pavement expenditures statewide for the next ten years. Pavement expenditures are expected to average about \$7,400 per centerline mile for counties and about \$15,200 per centerline mile for cities. These expenditure estimates do not include replacement for safety, traffic and regulatory items such as, storm drain, curb and gutter, sidewalk, curb ramps, traffic signals, street lights, sound and retaining walls, traffic signs, NPDES requirements, and ADA compliance. The average cost for replacement of these items in cities is about \$21,700 per centerline mile, and \$1,400 per centerline mile for counties. City streets tend to have different characteristics than county roads, and the larger difference in costs for cities is due to their mostly urban nature and greater inventories of safety, traffic and regulatory items in these categories. County roads typically require just shoulder widening.

The average Pavement Condition Index (PCI) rating statewide for streets and roads is 68. This rating is considered to be in the “at risk” category. The PCI for major and local roads in Placer County, including cities, is rated at 79 out of a possible rating of 100. This rating is shown in Table 6.1-4. This rating falls within the “Good – Excellent” range of the index, and is the highest PCI in the State. Pavement falling in this range of the index is best suited for preservation techniques, such as chip seals or slurry seals, which are usually applied at intervals of five to seven years depending upon the road’s traffic volume. Placer County’s PCI rating of 79 can be attributed in part to recent population growth that resulted in the development of new roads.

Table 6.1-4
Summary Inventory & Pavement Conditions for Placer County

	All	Major	Local	Unpaved
Centerline Miles	1989	559	1370	60
Lane Miles	4099	1262	2717	120
Placer County				
Average PCI	79	79	79	NA
Statewide				
Average PCI	68	NA	NA	NA

Note: Data includes Placer County and all cities.

Source:

1. California Statewide Local Streets and Roads Needs Assessment Final Report, Nichols Consulting Engineers, Chtd., October 2009.

Bridge Needs Assessment

Bridges are an integral part of the overall regional transportation system. Caltrans maintains a bridge management system (PONTIS) that contains an inventory and condition data for all bridges in the State (see <http://www.dot.ca.gov/hq/structur/strmaint/local/localbrlist.pdf>). The inventory includes bridges owned by the State, Placer County and its cities, other state agencies, and special districts. The inventory does not include structures such as culverts that have a span of less than 20 feet; nor does this definition include bridges owned by railroads or private landowners. The condition data is used to help determine when bridges need maintenance and repair, rehabilitation such as a seismic retrofit, or replacement.

Bridge condition is typically characterized by a sufficiency rating similar to the PCI index used for pavement. The sufficiency rating is based on FHWA criteria, which looks at structural adequacy and deficiency, safety, serviceability, functional obsolescence, and essentiality for public use. The sufficiency rating is used to determine a bridge's eligibility for funding under the federal HBP. Under the HBP, bridges are eligible for rehabilitation when the sufficiency rating is less than or equal to a rating of 80, and for replacement when the rating is less than or equal to 50. Local agencies are required to review the inventory to verify their bridges are eligible for Highway Bridge Program (HBP) funds.

Unfortunately, there is currently no comprehensive bridge needs assessment performed with the PONTIS condition data at either the local or statewide level.

Complete Streets

A "complete street" is a transportation facility that is planned, designed, operated and maintained to provide safe mobility for all users appropriate to the function and context of the facility. Users include bicyclists, pedestrians, transit riders, as well as motorists. Complete street elements can include a number of design elements, from raised medians, appropriate signal timing, traffic calming features, bike lanes, sidewalks, transit amenities, shade trees and landscaping features. In February 2010, Caltrans initiated a Complete Streets Implementation Action Plan as part of a commitment to transform the State highway system in a manner to meet the needs of all legal users.

REGIONAL ROADWAY ACTION PLAN

Short Range

1. Continually develop and implement innovative approaches to delivering projects (as shown in Table 6.1-3 as quickly and cost effectively as possible. (*PCTPA, project sponsors*))
2. Identify and pursue additional funding sources, as appropriate. (*PCTPA, Caltrans, jurisdictions*)
3. Obtain funding for and construct regionally significant roadway projects shown in Figures 6.1c through 6.1e. (*PCTPA, SPRTA, Caltrans, jurisdictions*)
4. Identify deficiencies and/or future congestion impacts on the regional road network. (*PCTPA, Caltrans, jurisdictions*)
5. Maintain street and highway system, including vegetation management. (*Caltrans, jurisdictions*)
6. Identify and implement operational improvements on local streets and roads. (*Jurisdictions*)
7. Implement capacity increasing strategies that encourage the use of alternative modes, such as High Occupancy Vehicle (HOV) lanes. (*PCTPA, Caltrans, jurisdictions*)
8. Develop parallel capacity to I-80 and SR65 to reduce congestion and reliance on I-80 and SR65 for local trip purposes. (*PCTPA, SPRTA, jurisdictions*)
9. Consider the concept of complete streets when developing and implementing local roadway improvement projects. (*Jurisdictions*)
10. Improve select rural roads to an urban standard that serve new Blueprint development on the urban edge. (*Jurisdictions*)
11. Continue to participate in the Caltrans system planning and corridor planning processes. (*PCTPA, jurisdictions, Caltrans*)
12. Consider access management strategies along older retail corridors to improve economic performance. (*Jurisdictions, transit operators, Caltrans*)
13. Maintain pavement conditions at a good or better Pavement Condition Index. (*Jurisdictions, Caltrans*)

Long Range

1. Construct the Placer Parkway, in phases, connecting from SR65 to SR70/99. (*PCTPA, SPRTA, Caltrans, jurisdictions, other state/federal agencies*)
2. Continue to implement the actions called for in the short range action plan. (*PCTPA, Caltrans, jurisdictions, other state/federal agencies*)

REGIONAL ROADWAY PROJECTS

Regional roadway projects are shown on Table 6.1-5 through Table 6.1-7. Regional roadways are proposed to improve mobility, promote safety and operations, maintain the structural integrity of the roadway, and to promote economic vitality.

State Highway Projects List
Table 6.1-5

Lead Agency	SACOG Project ID	SACOG MTP	SACOG MTIP	Project Title	Project Description	Year Complete	Status	Current Year (2010) \$	Expenditure Year \$
City of Roseville Dept of Public Works	PLA15710	'07-00	09-35	I-80 Eureka Road On-Ramp Improvements	In Roseville, Eureka Road at I-80: add 4th WB thru lane from 500' E of N. Sunrise to eastbound I-80 on-ramp, including Miners Ravine Bridge widening, & change existing #1 NB & SB thru lanes at Sunrise/Eureka to left turn lanes. HPP #2399	2011	Programmed	\$9,600,000	\$9,984,000
Caltrans District 3	CAL18797	'07-00	11-00	I-80 HOV Lanes & Aux Lanes - Phase 3	Phase 3 of the Operational Improvement Project: On I-80, Construct east & west bound extensions of the HOV (High Occupancy Vehicle) lanes & auxiliary lanes from Miners' Ravine to SR 65, 1 mile east of the 65/80 Separation. Includes widening of Miners' Ravine Bridge in both directions.	2012	Programmed	\$33,848,000	\$36,609,997
Caltrans District 3	CAL18767	'07-00	11-00	I-80 Operational Improvements/HOV - Phase 2	In Placer County, near Sacramento, phase 2, west of Sacramento/Placer County line to Miners' Ravine Bridge- Construct eastbound & westbound HOV lanes & auxiliary lanes, with bridge widening & ramp modifications.	2012	Programmed	\$47,576,532	\$51,458,777
Caltrans District 3	CAL20398	07-00	11-00	I-80 Rehabilitation - SHOPP	In Auburn, Placer County, from 0.5 mile west of Ophir Road undercrossing to 0.1 mile east of Russell Road overcrossing, rehabilitate roadway (16.8/R19.0).	2012	Programmed	\$7,515,000	\$8,128,224
Caltrans District 3	CAL20422	07-00	11-00	I-80 Maintenance in Placer County	On I-80 in Placer County, 7 miles east of Auburn, from 1.7 miles west of Applegate Road overcrossing (Br #19-0130) to 0.2 mile east of Junction SR174 in Colfax: perform maintenance of asphalt & concrete overlay.	2012	Programmed	\$6,165,500	\$6,668,605
Caltrans District 3	CAL20393	07-00	11-00	Sac/Pla/Nev Thin Friction Surface	In Sacramento, Placer & Nevada counties at various Locations - place a thin high friction surface (SHOPP - Collision Reduction). In Placer County at Pla-80-8.87.	2012	Programmed	\$842,000	\$910,707
Caltrans District 3	CAL20442	'07-00	11-00	Upgrade MBGR End Treatments at Various Locations	In El Dorado, Placer, Sutter, Butte & Nevada counties on SR 99, 20, 49 & 50 - Upgrade metal beam guard rail (MBGR) end treatments (approximately 50% of work in El Dorado, Placer & Sutter counties; 29% in Butte County; & 21% in Nevada County)..	2012	Programmed	\$5,170,000	\$5,591,872
City of Lincoln Dept of Public Works	PLA19070	'07-00	11-00	Ferrari Ranch Road at SR65 Bypass	In Lincoln, SR65 Lincoln Bypass at Ferrari Ranch Road: construct interchange.	2012	Programmed	\$14,495,628	\$15,678,471
Caltrans District 3	CAL20439	07-00	11-00	Martis Creek Left-Turn Lane	Near Truckee on SR 267 at Martis Creek Lake Road, construct a left-turn lane pocket.	2013	Programmed	\$1,458,000	\$1,640,052
Caltrans District 3	CAL18826	'07-00	11-00	I-80 Rehabilitate Bridge Decks Near Roseville	Placer County, I-80 near Roseville at various Locations from Auburn/Riverside Overcrossing to Weimar Cross Road - Rehabilitate bridge decks (PM 0.3/29.3).	2013	Programmed	\$16,184,000	\$18,204,799
Caltrans District 3	CAL18780	07-00	11-00	Various Counties Upgrade Guardrail	In Placer Counties on SR65 upgrade guardrail. Project includes other various counties in District 3.	2013	Programmed	\$2,843,400	\$3,198,438
Caltrans District 3		07-00		SR65 Lincoln Bypass Phase 2	In Placer County, SR65: Right-of-way acquisition & construct a 4-lane expressway from North Ingram Slough to Sheridan.	2014	Planned	\$55,000,000	\$64,342,221
Caltrans District 3		07-00		SR193 Pavement Rehabilitation	Rehabilitate roadway from Sierra College to Newcastle.	2014	Planned	\$5,000,000	\$5,849,293
Caltrans District 3	CAL18829	'07-00	11-00	Upgrade MBGR End Treatments in Various Counties	In Sacramento, Placer, Yuba & Yolo Counties at various Locations - Upgrade metal beam guard rail end treatments (project includes additional \$2 million of OTS funds).	2014	Programmed	\$6,380,000	\$7,463,698

Lead Agency	SACOG Project ID	SACOG MTP	SACOG MTIP	Project Title	Project Description	Year Complete	Status	Current Year (2010) \$	Expenditure Year \$
Caltrans District 3	CAL17240	'07-00	11-00	SR65 Lincoln Bypass	Placer County, SR 65: Construct a 4-lane expressway on a new alignment from Industrial Avenue to north of North Ingram Slough & continue north with 2 lanes to Sheridan. Also design & construct a Park & Ride facility at SR65 Bypass & Industrial Avenue. (Emission Reductions in kg/day: ROG 1, NOx 1.2, PM10 0.6.) HPP #1408	2014	Programmed	\$291,783,000	\$341,344,840
Caltrans District 3	CAL20389	'07-00	11-00	SR193 Curve Improvement	Near Lincoln, from 0.1 mile west to 0.9 mile east of Clark Tunnel Road - Realign curve improvement (SHOPP Lump Sum - Collision Reduction) (PM 4.5/5.4).	2014	Programmed	\$12,586,000	\$14,723,840
City of Rocklin Division of Engineering	PLA25374	'07-00	11-00	Whitney Ranch Parkway Interchange	Whitney Ranch Parkway & SR 65: construct full movement interchange.	2014	Programmed	\$20,000,000	\$23,397,171
Caltrans District 3	CAL18828	'07-00	11-00	I-80 Vertical Clearance Improvements	Placer County, I-80 in & near Loomis at various Locations from Brace Road to Magra Road - Improve vertical clearance (PM 8.1/37.8).	2015	Programmed	\$36,045,000	\$43,854,254
Caltrans District 3	CAL20375	'07-00	11-00	Northstar Slope Stabilization	Near Truckee, from 1.2 miles east of Northstar Drive to Brockway Summit - Stabilize slopes, repair dikes & culverts, & place rock slope protection (PM 4.9/6.7). (Storm Water Mitigation)	2015	Programmed	\$7,510,000	\$9,137,063
City of Roseville Dept of Public Works	PLA25209	'07-00	11-00	Galleria Boulevard/SR 65 Interchange Phase II Improvements	In Roseville, at existing interchange on SR 65/Galleria Boulevard/Stanford Ranch Road.: modify all on & off ramps to provide improved operations.	2015	Programmed	\$5,000,000	\$6,083,265
Caltrans District 3	CAL20420	07-00	11-00	SR89 - Squaw Valley to Nevada County Line Rehabilitation	Pla-89, near Truckee, from 0.2 mile of Squaw Valley Road to the Nevada County line: rehabilitate roadway (PM 13.5/21.7) - SHOPP Roadway Preservation CTIPS ID 120-0000-0066.	2016	Programmed	\$8,870,000	\$11,223,380
Caltrans District 3	CAL20424	07-00	11-00	I-80 3-Mile Truck Climbing Lane	Near Colfax on I-80, from the Long ravine UP to east of Magra Road overcrossing: widen eastbound roadway for truck climbing lane, replace two structures, rehabilitate drainage & extend culverts, eliminate or construct westbound standard off/on ramps at Magra Road overcrossing (PM 35.1/38.0). (Project will use tapered match, matching FHWA discretionary IMD funds with State matching funds during later phases).	2018	Programmed	\$31,600,000	\$43,246,782
City of Lincoln Dept of Public Works	PLA18950	07-00		SR193 Widening	Widen: 4 lanes from Ferrari Ranch Road to Sierra College Boulevard.	2019	Planned	\$6,000,000	\$8,539,871
City of Rocklin Division of Engineering	PLA25345	'07-00	11-00	I-80 / Rocklin Road Interchange	In Rocklin: from Rocklin Road onto both westbound & eastbound I-80; construct a combination of loop/flyover ramps to eliminate left-turn movements.	2020	Programmed	\$29,850,000	\$44,185,292
Placer County Transportation Planning Agency	PLA25440	07-00	09-37	SR65/I-80 Interchange Improvements (Phase 1)	Rebuild SR65/I-80 to improve movement from eastbound I-80 to northbound SR65 (Phase 1). (PA&ED of \$3,899,700 to be matched at 10 percent with Toll Credits).	2020	Programmed	\$30,000,000	\$44,407,329
Caltrans District 3		07-00		SR267 Widening	In eastern Placer County, widen SR267 from 2 lanes to 4 lanes from Nevada County line to Northstar Drive.	2025	Planned	\$10,000,000	\$18,009,435
Placer County Dept of Public Works		07-00		SR49 Widening	Widen from 4 lanes to 6 lanes from Luther Road to Nevada Street.	2027	Planned	\$10,000,000	\$19,479,005
Placer County Dept of Public Works		07-00		SR49 Widening	Widen from 4 lanes to 6 lanes from Bell Road to Dry Creek Road.	2027	Planned	\$10,000,000	\$19,479,005
South Placer Regional Transportation Authority	CAL18796	07-00		SR65 HOV Lanes Project	SR65 HOV Lanes Project area: 6.5 miles of SR 65 from the Galleria Boulevard interchange to the Industrial Avenue interchange. The proposed project improvements include: preconstruction activities (PA&ED, PS&E, R/W support and construction support) for all phases of project; and construction of HOV lanes on SR65 from the end of the proposed lanes of the I-80/SR 65 Interchange Modification Project to the Industrial Avenue interchange, which is currently under construction.	2033	Planned	\$109,270,000	\$269,319,467
Caltrans District 3		07-00		I-80 HOV Lanes East of SR65	New HOV lanes - one each direction - on I-80 from SR65 east to SR49.	2035	Planned	\$200,000,000	\$533,167,266
City of Colfax Dept of Public Works		'07-00		SR174	Unspecified operational improvements at SR. 174 & I-80	2035	Planned	\$3,000,000	\$7,997,509

Lead Agency	SACOG Project ID	SACOG MTP	SACOG MTIP	Project Title	Project Description	Year Complete	Status	Current Year (2010) \$	Expenditure Year \$	
Placer County Transportation Planning Agency				SR65/I-80 Interchange Modification	Project area: 3.3 mile of I/80 between Miners Ravine Bridge and approximately 0.2 mile west of Rocklin Road and 2.1 miles of SR65 between I-80 junction and approximately 1 mile to the north of Galleria Boulevard. The proposed project improvements include: (1) construction of a 2-lane bi-directional HOV direct connector on eastbound I-80 to northbound SR65 and southbound SR65 to westbound I-80; (2) replacement of the eastbound I-80 to northbound SR65 loop connector with a 3-lane flyover ramp; (3) ramp widening and additional lane at the southbound SR65 on-ramp from Galleria Boulevard; (4) connector widening with associated auxiliary lane at the westbound I-80 to northbound SR65 connector; (5) reconstruction and widening of the southbound SR65 to eastbound I-80 connector flyover; (6) widening of I-80 and SR65 and associated ramp realignments at Eureka Road, Taylor Road and Galleria Boulevard; (7) widening the East Roseville Viaduct; (8) replacement of the Taylor Road Overcrossing to accommodate widening I-80; (9) construction of HOV lanes on SR65 from the I-80/SR 65 interchange past the Galleria Boulevard interchange.	2035	Planned	\$250,000,000	\$666,459,083	
								2010-2015	\$585,002,060	\$674,269,586
								2016-2024	\$106,320,000	\$151,602,653
								2025-2035	\$592,270,000	\$1,533,910,771
								Total	\$1,283,592,060	\$2,359,783,010

**Table 6.1-6
Regional & Local Roads Projects List**

Lead Agency	SACOG Project ID	SACOG MTP	SACOG MTIP	Project Title	Project Description	Year Complete	Status	Current Year (2010) \$	Expenditure Year \$
City of Roseville Dept of Public Works	PLA25442	07-00	11-00	Riverside Avenue Storm Drain Improvement Project - Phase II	In Roseville on Riverside Avenue, Bonita Street, Clinton Avenue & Cherry Street, upgrade existing drainage infrastructure.	2010	Programmed	\$400,000	\$400,000
City of Roseville Dept of Public Works	PLA25428	07-00	09-26	Jobs for Main Street - Microsurfacing	In Roseville, application of microsurfacing to the following existing roadways: Church Street from Atkinson Street to Washington Boulevard; Baseline Road from Fiddymont Road to Foothills Boulevard; Junction Boulevard from Washington Boulevard to Foothills Boulevard; Foothills Boulevard from Junction Boulevard to Main Street / Baseline Road; Atlantic Street from Folsom Road to Eureka Road; and Pleasant Grove Boulevard from Foothills Boulevard to Roseville Parkway.	2010	Programmed	\$1,400,000	\$1,400,000
Placer County Dept of Public Works	PLA25392	07-00	11-00	Horseshoe Bar Road Curve Improvements	This project will improve roadway curves on Horseshoe Bar Road between Happy Road & Auburn-Folsom Road. Sight distance at problem curves will be improved by grading, widening shoulder, & vegetation removal.	2010	Programmed	\$785,000	\$785,000
City of Colfax Dept of Public Works	PLA25205	07-00	11-00	Overlays & Pavement Rehabilitation	In Colfax, surface overlays, various dig-outs, & patching of failed substructure South Auburn Street north of SR174, North Main Street, Grass Valley Street, & Rocky Road.	2011	Programmed	\$300,000	\$312,000
City of Rocklin Division of Engineering	PLA25502	07-00	11-00	Rocklin Road / Meyers Street Intersection Improvements	Construct a new roundabout at the intersection of Rocklin Road & Meyers Street.	2011	Programmed	\$963,205	\$1,001,733
City of Rocklin Division of Engineering	PLA25503	07-00	11-00	Rocklin Road Pavement Rehabilitation	Reconstruct Rocklin Road from Granite Drive to Meyers Street & High Street to Pacific Street.	2011	Programmed	\$1,500,000	\$1,560,000
City of Rocklin Division of Engineering	PLA25267	07-00	11-00	Civic Center Drive	Civic Center Drive: Construct new two lane roadway from the intersection of Meyers Street / Rocklin Road to an intersection with Pacific Street. One or more phases of this project may require federal permitting.	2011	Programmed	\$2,698,000	\$2,805,920

Lead Agency	SACOG Project ID	SACOG MTP	SACOG MTIP	Project Title	Project Description	Year Complete	Status	Current Year (2010) \$	Expenditure Year \$
City of Roseville Dept of Public Works	PLA25422	'07-00	11-00	2010 Douglas Boulevard Bonded Wearing Course	In Roseville on Douglas Boulevard, from Sierra Gardens to Sierra College, apply bonded wearing course.	2011	Programmed	\$1,986,850	\$2,066,324
Placer County Dept of Public Works	PLA25427	07-00	11-00	Foresthill Passing Lane Modification Project	Project is Located on Foresthill Road 4.9 miles east of the intersection of I-80 and Auburn Ravine - Foresthill Road Exit, between PM 5.25 & 5.50. Project includes realigning & restriping of approximately 875lf of centerline to increase the horizontal curve from 560lf to 700lf; remove approximately 965lf of eastbound passing lane; extend approximately 413lf of westbound passing lane; and apply a microsurface friction course to entire project. Project also includes striping of approximately 1415lf of the south shoulder to maintain 12 - 14 foot maximum lane width.	2011	Programmed	\$125,000	\$130,000
Town of Loomis Dept of Public Works	PLA25252	'07-00	11-00	Swetzer Road / King Road Signalization	In Loomis, install signal that is synchronized with the UPRR railroad at the Swetzer Road & King Road intersection.	2011	Programmed	\$347,345	\$361,239
City of Auburn Dept. of Public Works	PLA25230	'07-00	11-00	Dairy Road Realignment	Roadway improvements along Dairy Road from Auburn Ravine to Luther Road, including realignment, bike lanes, bus turnouts, & sidewalks.	2012	Programmed	\$1,000,000	\$1,081,600
City of Colfax Dept of Public Works	PLA25466	07-00	*11-00	Main & Grass Valley Signal Improvements	Design & construction of a new traffic signal & turn-lane at the intersection of Main Street & Grass Valley Street. (Emission reductions: ROG 16 lbs/yr; NOx 11 lbs/yr; CO 20 lbs/yr).	2012	Programmed	\$200,000	\$216,320
City of Lincoln Dept of Public Works	PLA18710	'07-00	11-00	Industrial Boulevard	Industrial Boulevard, from Route 65 to 12 Bridges Drive: Widen from 2 to 4 lanes.	2012	Programmed	\$948,000	\$1,025,357
City of Lincoln Dept of Public Works	PLA18790	'07-00	11-00	East Joiner Parkway	Widen East Joiner Parkway from 2 to 4 lanes from Del Webb Boulevard to Twelve Bridges.	2012	Programmed	\$1,104,290	\$1,194,400
City of Lincoln Dept of Public Works	PLA19020	'07-00	11-00	Twelve Bridges Drive	Twelve Bridges Drive from Industrial Boulevard to SR 65 Interchange: widen from 2 to 4 lanes, including interchange improvements.	2012	Programmed	\$230,414	\$249,216
City of Lincoln Dept of Public Works	PLA20810	'07-00	11-00	East Avenue	Reconstruct & restripe East Avenue 2-lane roadway from East 9th Street to SR193.	2012	Programmed	\$1,900,000	\$2,055,040
City of Rocklin Division of Engineering	PLA25356	'07-00	11-00	NEV Lanes	Install striping, pavement markings, & signage to existing roadways to provide Neighborhood Electric Vehicle (NEV) access from residential areas within the City of Rocklin to downtown Rocklin & commercial areas. (Emission benefits in kg/day: ROG 3.29, NOx 2.88, PM10 1.56)	2012	Programmed	\$267,500	\$289,328
City of Roseville Dept of Public Works	PLA25375	'07-00	11-00	Blue Oaks Extension	Roseville, Blue Oaks from 1300' west of Fiddymont to Hayden Pkwy., extend as 4 lanes. From Hayden Pkwy. to Westside extend as 2 lanes, including a 6 lane bridge over Kaseberg Creek.	2012	Programmed	\$9,700,000	\$10,491,520
City of Roseville Dept of Public Works	PLA25381	'07-00	11-00	Westside Drive	City of Roseville: New N/S Road in West Roseville Specific Plan, west of Fiddymont Road, south of Blue Oaks Avenue, between Pleasant Grove & Blue Oaks.	2012	Programmed	\$3,500,000	\$3,785,600
Placer County Dept of Public Works	PLA25128	'07-00	11-00	De La Salle Access Road	Construct De La Salle Access Road: new 4 lane road from Watt Avenue extension north to De La Salle University.	2012	Programmed	\$6,000,000	\$6,489,600
Placer County Dept of Public Works	PLA15080	'07-00	11-00	Auburn-Folsom Road Widening	From Placer/Sacramento County line to Douglas Boulevard: Widen to 4 lanes & install a signal at Auburn-Folsom Road & Fuller Drive.	2012	Programmed	\$27,300,000	\$29,527,680
Placer County Dept of Public Works	PLA25044	'07-00	11-00	Sunset Boulevard	Widen Sunset Boulevard from SR 65 to Cincinnati Avenue from two to four lanes. Project includes widening Industrial Boulevard / UPRR overcrossing from two to four lanes.	2012	Programmed	\$8,675,000	\$9,382,880
Placer County Dept of Public Works	PLA25170	'07-00	11-00	Sunset Boulevard Phase 2	Sunset Boulevard, from Foothills Boulevard to Fiddymont Road: Construct a 2-lane road extension [PLA15410 is Phase 1.]	2012	Programmed	\$6,275,000	\$6,787,040
Town of Loomis Dept of Public Works	PLA25182	'07-00	09-38	Multi-Modal Parking Facility - Phase 1	Multi-modal parking facility, bus stop & bicycle & pedestrian improvements on approximately 10 acres of Union Pacific property on Horseshoe Bar Road, adjacent to downtown Loomis. Phase 1 includes environmental, engineering & design, property acquisition & initial construction; future phases 2 & 3 cover construction only. Air quality emissions reduction is estimated at 1.0 kg per day.	2012	Programmed	\$1,402,232	\$1,516,654

Lead Agency	SACOG Project ID	SACOG MTP	SACOG MTIP	Project Title	Project Description	Year Complete	Status	Current Year (2010) \$	Expenditure Year \$
Town of Loomis Dept of Public Works	PLA25251	'07-00	11-00	Bankhead Road Widening	In Loomis, widen Bankhead Road to standard lane width, including possible construction of bike lanes.	2012	Programmed	\$600,000	\$648,960
Town of Loomis Dept of Public Works	PLA25253	'07-00	11-00	Sierra College Boulevard / Bankhead Road Signalization	Signalize intersection at Sierra College Boulevard & Bankhead Road in Loomis.	2012	Programmed	\$300,000	\$324,480
Town of Loomis Dept of Public Works	PLA25354	'07-00	11-00	King Road. / Swetzer Road. Signalization	Construct a new traffic signal at King Road & Swetzer Road & provide synchronization between this signal, the King Road & the Taylor Road traffic signals & the Union Pacific railroad crossing. (Emission benefits in kg/day ROG 2.35, NOx 0.75)	2012	Programmed	\$152,931	\$165,410
City of Lincoln Dept of Public Works	PLA18770	'07-00		Lincoln Pkwy.	Widen: 4 lanes from Sterling Pkwy. to Del Webb Boulevard	2013	Planned	\$175,000	\$196,851
City of Lincoln Dept of Public Works	PLA18650	'07-00	11-00	Aviation Boulevard	Widen Aviation Boulevard from 2 to 4 lanes from Venture Drive to terminus 0.5 miles north of Venture Drive	2013	Programmed	\$850,000	\$956,134
City of Roseville Dept of Public Works	PLA25377	'07-00	11-00	Market Drive	City of Roseville; Extend from Baseline Road to Pleasant Grove.	2013	Programmed	\$8,500,000	\$9,561,344
City of Roseville Dept of Public Works	PLA25430	'07-00	11-00	Washington Boulevard Bonded Wearing Course	In Roseville, on Washington Boulevard from Pleasant Grove Boulevard to Blue Oaks Boulevard: apply 1-inch bonded wearing course to existing street surface.	2013	Programmed	\$1,175,460	\$1,322,233
City of Roseville Dept of Public Works	PLA25382	'07-00	11-00	Westside Drive	City of Roseville: New N/S Road in proposed new Sierra Vista Specific Plan, west of Fiddymont Road, between Baseline & Pleasant Grove.	2013	Programmed	\$4,000,000	\$4,499,456
Placer County Dept of Public Works	PLA15120	'07-00	11-00	Bill Francis Drive	Construct 2-lane road from new Airport Road. to old Airport Road.	2013	Programmed	\$1,500,000	\$1,687,296
Placer County Dept of Public Works	PLA16840	'07-00	11-00	Douglas Boulevard Widening	In Placer County, Douglas Boulevard: widen from 4 to 6 lanes from Cavitt Stallman Road south to Sierra College Boulevard (1,000+ feet).	2013	Programmed	\$500,000	\$562,432
Placer County Dept of Public Works	PLA15420	'07-00	11-00	Walerga Road	Walerga Road: Widen & realign from 2 to 4 lanes from Baseline Road. to Placer / Sacramento County line.	2013	Programmed	\$13,781,700	\$15,502,538
Town of Loomis Dept of Public Works	PLA25254	'07-00	11-00	Del Oro High School / Taylor Road Signalization	In Loomis, signalize the intersection at Del Oro High School & Taylor Road.	2013	Programmed	\$400,000	\$449,946
City of Auburn Dept. of Public Works	PLA25227	'07-00	11-00	Auburn Signalization & Traffic Calming	Installation of various traffic signals & traffic calming measures within the City of Auburn.	2014	Programmed	\$400,000	\$467,943
City of Auburn Dept. of Public Works	PLA25441	'07-00	11-00	Road Rehab & Overlays	In Auburn, various locations: perform pavement resurfacing and/or rehabilitation on the following urban roadways: Auburn-Folsom Road from Sunrise Ridge to Southridge, East Lincoln Way from Foresthill Avenue to Auburn City limits, and Dairy Road from Auburn Ravine to Luther Road.	2014	Programmed	\$363,768	\$425,557
City of Auburn Dept. of Public Works	PLA25233	'07-00	11-00	Central Auburn Roadway Network	Various roadway widening & new roadway construction as a result of new development & redevelopment in the central Auburn Area. One or more phases of this project may require federal permitting.	2014	Programmed	\$500,000	\$584,929
City of Colfax Dept of Public Works	PLA25238	'07-00	11-00	South Canyon Way / Illinois Town Road	Intersection improvements, including construction of a center turn lane, at South Canyon Way & Illinois Town Road in Colfax.	2014	Programmed	\$225,000	\$263,218
City of Colfax Dept of Public Works	PLA25239	'07-00	11-00	South Canyon Way / Plutes Road	Intersection improvements, including the construction of a center turn lane at South Canyon Way & Plutes Road in Colfax.	2014	Programmed	\$225,000	\$263,218
City of Colfax Dept of Public Works	PLA25240	'07-00	11-00	Canyon Creek Road Extension	Extension of Canyon Creek Road to City Limits. Improvements include curb, gutter, & sidewalk.	2014	Programmed	\$100,000	\$116,986
City of Colfax Dept of Public Works	PLA25241	'07-00	11-00	Shadowwood Subdivision Local Road Network	Local road network within & around Shadowwood subdivision. Project may require Federal permitting.	2014	Programmed	\$260,000	\$304,163
City of Colfax Dept of Public Works	PLA25242	'07-00	11-00	Plutes Road	Construction of new subdivision access road from Canyon Way to east City limits, including construction of culvert at Bunch Creek. Project may require Federal permitting.	2014	Programmed	\$1,087,500	\$1,272,221
City of Colfax Dept of Public Works	PLA25243	'07-00	11-00	Illinois Town Road	Construction of new subdivision access road from Canyon Way to east City limits, including construction of culvert at Bunch Creek. Project may require Federal permitting.	2014	Programmed	\$1,147,500	\$1,342,413
City of Colfax Dept of Public Works	PLA25244	'07-00	11-00	Colfax Pines Subdivision New Local Road	New Local road connecting Colfax Pines development to Iowa Hill Road. Project may require Federal permitting.	2014	Programmed	\$650,000	\$760,408

Lead Agency	SACOG Project ID	SACOG MTP	SACOG MTIP	Project Title	Project Description	Year Complete	Status	Current Year (2010) \$	Expenditure Year \$
City of Colfax Dept of Public Works	PLA25145	'07-00	11-00	Railroad Avenue Connector	Construct north south connector road on Railroad Avenue with pedestrian & bicycle improvements from Whitcomb to Grass Valley Street.	2014	Programmed	\$1,357,500	\$1,588,083
City of Lincoln Dept of Public Works	PLA25168	'07-00		Ferrari Ranch Road	Widen: 4 lanes from E. Caledon Circle to Lincoln City limit.	2014	Planned	\$1,000,000	\$1,169,859
City of Lincoln Dept of Public Works	PLA25169	'07-00		Ferrari Ranch Road	Widen: 4 lanes from SR65 to SR193.	2014	Planned	\$2,252,000	\$2,634,521
City of Lincoln Dept of Public Works	PLA20750	'07-00	11-00	Airport Road	Reconstruct 1 mile of an existing 2-lane Airport Road from Nicolaus Road to Weco Access Road.	2014	Programmed	\$721,000	\$843,468
City of Lincoln Dept of Public Works	PLA25467	07-00	11-00	Ferrari Ranch Road Extension	Extend Ferrari Ranch Road from existing City limit near Caledon Circle to Moore Road (Village 7 boundary).	2014	Programmed	\$1,920,000	\$2,246,128
City of Rocklin Division of Engineering	PLA25499	07-00	11-00	Rocklin Road / Grove Street Roundabout	Convert existing signalized intersection at Rocklin Road / South Grove Street & the offset unsignalized intersection at Rocklin Road / Grove Street to a dual roundabout intersection. (Emission benefits (kg/day) ROG 0.32, NOx 0.40, PM10 0.07).	2014	Programmed	\$2,102,061	\$2,459,114
City of Rocklin Division of Engineering	PLA20460	'07-00	11-00	Sierra College Boulevard	In Rocklin, Sierra College Boulevard from Aguilar Tributary to Nightwatch: widen from 2 to 4 lanes.	2014	Programmed	\$2,750,000	\$3,217,111
City of Rocklin Division of Engineering	PLA25025	'07-00	11-00	Whitney Ranch Parkway	In Rocklin, Whitney Ranch Parkway: construct new 6-lane facility from SR 65 to east of Wildcat Boulevard.	2014	Programmed	\$4,739,673	\$5,544,747
City of Rocklin Division of Engineering	PLA25156	'07-00	11-00	Sunset Boulevard	Sunset Boulevard: Widen to 6 lanes from north bound SR 65 ramp to West Stanford Ranch Road.	2014	Programmed	\$850,000	\$994,380
City of Rocklin Division of Engineering	PLA15530	'07-00	11-00	Pacific Street	Widen Pacific Street to 4 lanes from Sierra Meadows to Loomis Town Limits.	2014	Programmed	\$6,000,000	\$7,019,151
City of Rocklin Division of Engineering	PLA19260	'07-00	11-00	Dominguez Road	In Rocklin, Dominguez Road: extend with 2 lanes from Granite Drive to Sierra College Boulevard, including new bridge over I-80.	2014	Programmed	\$11,000,000	\$12,868,444
City of Rocklin Division of Engineering	PLA25268	07-00	09-00	University Avenue - Phase 1	New road: 4 lanes from the intersection of Whitney Ranch Parkway, north to the extension of West Ranchview Drive.	2014	Programmed	\$2,500,000	\$2,924,646
City of Rocklin Division of Engineering	PLA25270	'07-00	11-00	University Avenue - Phase 2	In Rocklin, University Avenue from the intersection of Sunset Boulevard / Atherton Road north to the intersection of Whitney Ranch Parkway: Construct a new four lane roadway. One or more phases of this project may require federal permitting.	2014	Programmed	\$4,500,000	\$5,264,364
City of Roseville Dept of Public Works	PLA25501	'07-00	11-00	Washington Boulevard / Andora Undercrossing Improvement Project	In Roseville, widen Washington Boulevard from 2 to 4 lanes, including widening the Andora Underpass under the UPRR tracks, between Sawtell Road & just south of Pleasant Grove Boulevard, & construct bicycle & pedestrian improvements adjacent to roadway. (Emission benefits in kg/day: 0.9 ROG, 0.51 NOx, 0.16 PM10).	2014	Programmed	\$13,321,950	\$15,584,797
City of Roseville Dept of Public Works	PLA25429	07-00	11-00	Industrial Avenue Rubberized Overlay	In Roseville, apply 2-inch gap graded rubberized asphalt to Industrial Avenue from Washington Boulevard to Justice Center Drive.	2014	Programmed	\$2,150,000	\$2,515,196
City of Roseville Dept of Public Works	PLA25380	'07-00	11-00	Westside Drive	City of Roseville: New N/S Road in proposed new Creekview Specific Plan, west of Fiddymnt Road, north of Blue Oaks Avenue.	2014	Programmed	\$6,000,000	\$7,019,151
City of Roseville Dept of Public Works	PLA15720	'07-00	11-00	Eureka Boulevard	Widen Eureka Boulevard from 2 to 4 lanes, from Sierra College to City Limits.	2014	Programmed	\$500,000	\$584,929
City of Roseville Dept of Public Works	PLA25436	07-00	09-29	Atlantic Street Micropave	In Roseville, on Atlantic Street from V Street to I-80, remove and replace damaged pavement and microsurface roadway.	2014	Programmed	\$517,850	\$605,811
City of Roseville Dept of Public Works	PLA25437	07-00	09-29	Baseline Road Micropave	In Roseville, on Baseline Road from Brady Lane to Fiddymnt Road, remove and replace damaged pavement and microsurface roadway.	2014	Programmed	\$775,005	\$906,646
City of Roseville Dept of Public Works	PLA15850	'07-00	11-00	Roseville Road	Widen from 2 to 4 lanes from City Limits to Cirby Way. STREET NAME: Roseville Road.	2014	Programmed	\$5,000,000	\$5,849,293
Placer County Dept of Public Works	PLA15100	'07-00	11-00	Baseline Road	In Placer County, Baseline Road from Fiddymnt Road to Watt Avenue: widen from 2 to 4 lanes.	2014	Programmed	\$6,462,500	\$7,560,211
Town of Loomis Dept of Public Works	PLA20900	'07-00	11-00	Taylor Road Improvements	In Loomis, Taylor Road from south town limits to King Road: add signals at three intersections, 2500 feet of two-way left turn lanes, bike lanes, sidewalk, curb, gutter & underground Drainage system. See note below. STREET NAME: Taylor Road Improvements.	2014	Programmed	\$1,600,000	\$1,871,774

Lead Agency	SACOG Project ID	SACOG MTP	SACOG MTIP	Project Title	Project Description	Year Complete	Status	Current Year (2010) \$	Expenditure Year \$
City of Auburn Dept. of Public Works	PLA25234	'07-00		Baltimore Ravine Development	Local Road. Network: widening & construction of new Local roadways in the Baltimore Ravine area of Auburn as a result of new development.	2015	Planned	\$2,000,000	\$2,433,306
City of Auburn Dept. of Public Works	PLA25232	'07-00	11-00	Auburn Municipal Airport Area Local Road Network	Widening of existing roadways & construction of new Local roads in the Auburn Municipal Airport area as a result of new development. Federal permitting may be required for this project.	2015	Programmed	\$6,000,000	\$7,299,917
City of Colfax Dept of Public Works		07-00		Canyon Way	Intersection improvements at Canyon Way / I-80 overpass	2015	Planned	\$400,500	\$487,269
City of Colfax Dept of Public Works	PLA20430	'07-00		Rising Sun Road	Reconstruct & improve intersection at Ben Taylor Road., Church Street, & reconstruct Auburn Street from Grass Valley Street to SR. 174.	2015	Planned	\$1,453,500	\$1,768,405
City of Colfax Dept of Public Works	PLA25235	'07-00		SR174	Intersection improvements: South Auburn Street & Central Avenue Includes signalization.	2015	Planned	\$600,000	\$729,992
City of Colfax Dept of Public Works	PLA25236	'07-00		SR174	Intersection improvements: South Auburn Street Includes signalization.	2015	Planned	\$400,502	\$487,272
City of Colfax Dept of Public Works	PLA25237	'07-00		SR174	Intersection improvements: South Auburn Street & WB I-80. Includes signalization.	2015	Planned	\$420,000	\$510,994
City of Colfax Dept of Public Works	PLA25245	'07-00		Illinois Town-Plutes-Canyon Creek Loop Local Road	Construct: subdivision access road from Canyon Way, to east City limits, including construction of culvert at Bunch Creek. Federal permitting may be required as part of this project.	2015	Planned	\$2,400,000	\$2,919,967
City of Lincoln Dept of Public Works	PLA18810	'07-00		E. Joiner Pkwy.	Widen: 4 lanes from Twelve Bridges Drive to Rocklin city limits.	2015	Planned	\$450,000	\$547,494
City of Lincoln Dept of Public Works	PLA25161	'07-00		12th Street	Widen: 4 lanes from East Avenue to Harrison Avenue	2015	Planned	\$487,000	\$592,510
City of Lincoln Dept of Public Works	PLA25162	'07-00		McCourtney Road	Widen: 4 lanes from 12th Street to north Lincoln city limits.	2015	Planned	\$488,000	\$593,727
City of Lincoln Dept of Public Works	PLA18720	'07-00	11-00	Industrial Boulevard	Industrial Boulevard, from 12 Bridges Drive to Athens Boulevard: Widen from 2 to 4 lanes.	2015	Programmed	\$1,876,246	\$2,282,740
City of Rocklin Division of Engineering	PLA25151	'07-00	11-00	West Oaks Boulevard	West Oaks Boulevard: Construct new 4-lane extension from terminus to 4-lane portion to Whitney Ranch Parkway.	2015	Programmed	\$3,500,000	\$4,258,285
City of Rocklin Division of Engineering	PLA15400	'07-00	11-00	Sierra College Boulevard	In Rocklin, widen Sierra College Boulevard to 6 lanes from I-80 to Aguilar Tributary.	2015	Programmed	\$3,800,000	\$4,623,281
City of Rocklin Division of Engineering	PLA19230	'07-00	11-00	Argonaut Avenue	Construct Argonaut Avenue as 2 lanes from Yankee Hill Road to Del Mar Avenue, including a grade separation over UPRR tracks.	2015	Programmed	\$5,000,000	\$6,083,265
City of Roseville Dept of Public Works	PLA15690	'07-00		Cirby Way	Widen: 6 lanes (from 4) from Regency Street to Oak Ridge Drive	2015	Planned	\$2,000,000	\$2,433,306
City of Roseville Dept of Public Works	PLA19470	'07-00		Woodcreek Oaks	Widen: 4 lanes from Canevari Drive to North Branch of Pleasant Grove Ck.	2015	Planned	\$5,750,000	\$6,995,754
City of Roseville Dept of Public Works	PLA25211	'07-00		Galleria Boulevard	SR. 65 / Galleria Boulevard Interchange: re-stripe Galleria/ Stanford Ranch to 6 lanes; modify 3 NB & SB off ramps & SB Stanford Ranch Road. to NB 65 on ramp; add 2nd N/B Galleria to NB SR. 65 left-turn lane (Phase II)	2015	Planned	\$4,000,000	\$4,866,612
City of Roseville Dept of Public Works	PLA19810	'07-00	11-00	Atkinson Street/PFE Road Widening	In Roseville, Atkinson Street/PFE Road: widen from two to four lanes from Foothills Boulevard to just south of Dry Creek.	2015	Programmed	\$7,000,000	\$8,516,570
City of Roseville Dept of Public Works	PLA15600	'07-00	11-00	Sierra College Boulevard Widening	Sierra College Boulevard from Sacramento County line to Olympus Drive: widen to 6 lanes	2015	Programmed	\$1,661,100	\$2,020,982
City of Roseville Dept of Public Works	PLA15660	'07-00	11-00	Baseline Road	In Roseville, from City Limits to West of Foothills Boulevard, widen Baseline Road. from 3 to 4 lanes.	2015	Programmed	\$5,000,000	\$6,083,265
City of Roseville Dept of Public Works	PLA15760	'07-00	11-00	Pleasant Grove Boulevard Widening	In Roseville, from Foothills Boulevard to Wood Creek Oaks, widen Pleasant Grove Boulevard from 4 to 6 lanes.	2015	Programmed	\$600,000	\$729,992
City of Roseville Dept of Public Works	PLA17950	'07-00	11-00	Cirby Way Widening	In Roseville, Cirby Way from Riverside Avenue to Regency Way: Widen from 4 to 5 lanes.	2015	Programmed	\$500,000	\$608,326
City of Roseville Dept of Public Works	PLA25343	'07-00	11-00	Blue Oaks Extension & Widening	Blue Oaks, Widen: 4 lanes from Hayden Pkwy. to Westside; Extend: 4 lanes from Westside to Watt Avenue	2015	Programmed	\$12,500,000	\$15,208,161
City of Roseville Dept of Public Works	PLA25376	'07-00	11-00	Fiddymont Road	City of Roseville: Widen four lanes from Blue Oaks Boulevard to Baseline Road.	2015	Programmed	\$3,000,000	\$3,649,959
City of Roseville Dept of Public Works	PLA25378	'07-00	11-00	Santucci Boulevard	City of Roseville: Extend four lanes from Baseline Road to Blue Oaks Avenue.	2015	Programmed	\$6,500,000	\$7,908,244

Lead Agency	SACOG Project ID	SACOG MTP	SACOG MTIP	Project Title	Project Description	Year Complete	Status	Current Year (2010) \$	Expenditure Year \$
City of Roseville Dept of Public Works	PLA25379	'07-00	11-00	Pleasant Grove Boulevard	City of Roseville: Widen from Fiddymont Road to Watt Avenue	2015	Programmed	\$10,450,000	\$12,714,023
Placer County Dept of Public Works	PLA18390	'07-00		Dyer Pkwy.	Extend: 4 lanes west/north to Baseline Road. at Brewer Road. & east/north to Baseline Road. west of Fiddymont Road.	2015	Planned	\$16,000,000	\$19,466,446
Placer County Dept of Public Works	PLA15105	'07-00	11-00	Baseline Road Widening (West Portion)	Baseline Road. from Watt Avenue to Sutter County line: Widen from 2 to 4 lanes.	2015	Programmed	\$19,200,000	\$23,359,736
Town of Loomis Dept of Public Works	PLA25279	'07-00		King Road	Exp & Culvert: Sucker Ravine & King Road. Ancillary Road. work may be included. Federal permitting may also be required as part of this project.	2015	Planned	\$100,000	\$121,665
Town of Loomis Dept of Public Works	PLA15940	'07-00	11-00	Taylor Road Widening	Widen Taylor Road. from 2 to 4 lanes from Horseshoe Bar Road to King Road.	2015	Programmed	\$425,000	\$517,077
Town of Loomis Dept of Public Works	PLA20890	'07-00	11-00	Sierra College Boulevard Widening	In Loomis, Sierra College Boulevard from railroad tracks (Taylor Road) to the north town limits, widen from 2 to 4 lanes & construct turn lanes, bike lanes, & landscaped median.	2015	Programmed	\$5,899,180	\$7,177,254
Town of Loomis Dept of Public Works	PLA20960	'07-00	11-00	Sierra College Boulevard Widening	In Loomis, Sierra College Boulevard from Granite Drive to Bankhead Road: widen from 4 to 6 lanes.	2015	Programmed	\$3,600,000	\$4,379,950
Town of Loomis Dept of Public Works	PLA15250	'07-00	11-00	King Road	In Loomis, King Road: add turn lane from Sierra College Boulevard to Boyington Road.	2015	Programmed	\$809,000	\$984,272
Town of Loomis Dept of Public Works	PLA15350	'07-00	11-00	Rocklin Road Widening	In Loomis, Rocklin Road from Barton Road to west town limits: widen from 2 to 4 lanes.	2015	Programmed	\$1,200,000	\$1,459,983
Town of Loomis Dept of Public Works	PLA25290	'07-00	11-00	Orchard Place Subdivision Local Road Network	In Loomis, construct new Local road network as part of developing Orchard Place subdivision. Federal permitting may be required as part of this project.	2015	Programmed	\$191,400	\$232,867
Town of Loomis Dept of Public Works	PLA25289	'07-00	11-00	Grove Subdivision Local Road Network	In Loomis, construct new Local road network as part of Grove subdivision off of Humphrey Road. Federal permitting may be required as part of this project.	2015	Programmed	\$261,000	\$317,546
City of Rocklin Division of Engineering	PLA25272	'07-00		Pacific Street	Widen: 6 lanes from SW of Sunset Boulevard to NE of Sunset Boulevard	2016	Planned	\$300,000	\$379,596
City of Rocklin Division of Engineering	PLA19290	'07-00	11-00	Whitney Ranch Parkway	Whitney Ranch Parkway, construct new 4-lane facility from east of Old Ranch House Road to Whitney Oaks Drive	2016	Programmed	\$12,428,000	\$15,725,385
City of Rocklin Division of Engineering	PLA19400	'07-00	11-00	Rocklin Road	In Rocklin, Rocklin Road: widen to 6 lanes from Granite Drive to westbound I-80 ramps.	2016	Programmed	\$880,000	\$1,113,481
City of Rocklin Division of Engineering	PLA15620	'07-00	11-00	Sunset Boulevard	Widen Sunset Boulevard from 4 to 6 lanes, from Topaz to S. Whitney Boulevard	2016	Programmed	\$2,700,000	\$3,416,361
City of Rocklin Division of Engineering	PLA19250	'07-00	11-00	Valley View Parkway	Valley View Parkway: Construct 2 lanes from Park Drive to Sierra College Boulevard	2016	Programmed	\$9,575,000	\$12,115,430
City of Rocklin Division of Engineering	PLA19330	'07-00	11-00	Sierra College Boulevard	In Rocklin, Sierra College Boulevard: widen to 4 lanes from intersection with Valley View Parkway to Loomis Town limits (SPRTA Segment #2a).	2016	Programmed	\$8,650,000	\$10,945,010
City of Rocklin Division of Engineering	PLA19360	'07-00	11-00	Sunset Boulevard	Widen Sunset Boulevard from 4 to 6 lanes from Stanford Ranch Road. to Topaz.	2016	Programmed	\$2,600,000	\$3,289,829
City of Rocklin Division of Engineering	PLA25273	'07-00	11-00	Rocklin Road Widening	Widen Rocklin Road from 2 to 4 lanes from Loomis town limits to east of Sierra College Boulevard.	2016	Programmed	\$126,000	\$159,430
Placer County Dept of Public Works	PLA25463	'07-00	11-00	Baseline Road Widening Phase 2 (West Portion)	Baseline Road. from Sutter County line to future 16th Street: Widen from 2 to 4 lanes.	2016	Programmed	\$29,000,000	\$36,694,252
City of Lincoln Dept of Public Works	PLA18760	'07-00		E. Joiner Pkwy.	Widen: 6 lanes from Ferrari Ranch Road. to Sterling Pkwy. (Includes SR. 65 / UPRR overcrossing)	2017	Planned	\$7,000,000	\$9,211,522
Placer County Dept of Public Works	PLA15270	'07-00	11-00	North Antelope Road	North Antelope Road: Widen from 2 to 4 lanes from Sacramento County line to PFE Road.	2017	Programmed	\$2,026,600	\$2,666,867
Placer County Dept of Public Works	PLA25130	'07-00	11-00	Fiddymont Road Widening	Widen Fiddymont Road from 2 lanes to 4 lanes from Roseville City Limits to Athens Road.	2017	Programmed	\$11,550,000	\$15,199,012
Placer County Dept of Public Works	PLA20700	'07-00	11-00	Watt Avenue	Watt Avenue, from Baseline Road. to Sacramento County Line: Widen from 2 to 4 lanes.	2017	Programmed	\$27,487,500	\$36,171,675
Town of Loomis Dept of Public Works	PLA15290	'07-00		Boyington Road	Extend: 3 lanes from Horseshoe Bar Road. to King Road.	2017	Planned	\$2,000,000	\$2,631,864
Placer County Dept of Public Works	PLA20680	'07-00		Baseline Road	Widen: 6 lanes (from 2) from Watt Avenue to Fiddymont Road.	2018	Planned	\$8,870,000	\$12,139,207
Placer County Dept of Public Works	PLA20690	'07-00		PFE Road	Widen: 4 lanes from North Antelope Road. to Roseville City Limits.	2018	Planned	\$1,514,700	\$2,072,972

Lead Agency	SACOG Project ID	SACOG MTP	SACOG MTIP	Project Title	Project Description	Year Complete	Status	Current Year (2010) \$	Expenditure Year \$
Placer County Dept of Public Works	PLA15390	'07-00	11-00	Sierra College Boulevard	Widen Sierra College Boulevard from 2 to 4 lanes from SR193 to Loomis Town Limits.	2018	Programmed	\$13,000,000	\$17,791,398
Placer County Dept of Public Works	PLA18490	'07-00	11-00	PFE Road Widening	PFE Road, from Watt Avenue to Walerga Road: Widen from 2 to 4 lanes & realign.	2018	Programmed	\$13,085,000	\$17,907,726
Placer County Dept of Public Works	PLA25299	'07-00	11-00	Placer Parkway - Phase 1	Phase 1 of the Placer Parkway project, including Tier 2 environmental work, preliminary engineering, & construction to Located a roadway within the selected 500' wide approved Alternative 5 alignment corridor connecting SR. 65 (Whitney Ranch Pkwy) to Foothills Boulevard (replaces PLA25337 - Placer Ranch Parkway - \$145 million). Additional Tier 2 work may be completed in increments by Local jurisdictions for subsequent phases of the Placer Parkway project.	2018	Programmed	\$70,000,000	\$95,799,834
City of Lincoln Dept of Public Works	PLA18630	'07-00		Aviation Boulevard	New Road: 4 lanes from terminus 0.5 miles north of Venture Drive to Wise Road.	2019	Planned	\$4,000,000	\$5,693,247
City of Lincoln Dept of Public Works	PLA18910	'07-00		Nicolaus Road	Widen: 4 lanes from Joiner Pkwy. to Joiner Park	2019	Planned	\$600,000	\$853,987
City of Lincoln Dept of Public Works	PLA20740	'07-00		Airport Road	New road: 2 lanes from Weco Access Road. to Wise Road.	2019	Planned	\$5,500,000	\$7,828,215
City of Lincoln Dept of Public Works	PLA25163	'07-00		Virginiatown Road	Widen: 4 lanes from McCourtney Road. to east Lincoln city limits	2019	Planned	\$502,000	\$714,503
City of Lincoln Dept of Public Works	PLA25304	'07-00		Aviation Boulevard	Extend: 4 lanes from Venture Drive & Wise Road.	2019	Planned	\$15,000,000	\$21,349,677
City of Lincoln Dept of Public Works	PLA25305	'07-00		Oak Tree Extension	New road: 4 lane between Sierra College Boulevard & Wise Road. / SR. 65	2019	Planned	\$35,000,000	\$49,815,913
City of Roseville Dept of Public Works	PLA15740	'07-00		Galleria Boulevard	Widen: 6 lanes from Berry to Roseville Pkwy.	2019	Planned	\$1,500,000	\$2,134,968
City of Roseville Dept of Public Works	PLA15810	'07-00		Roseville Pkwy.	Extend: 4 lanes from Washington Boulevard to Foothills Boulevard	2019	Planned	\$6,000,000	\$8,539,871
Placer County Dept of Public Works	PLA15220	'07-00	11-00	Foothills Boulevard	Foothills Boulevard: Construct as a 2 lane road from the City of Roseville to Sunset Boulevard	2019	Programmed	\$4,062,300	\$5,781,920
City of Lincoln Dept of Public Works	PLA25166	'07-00		Twelve Bridges Drive	Widen: 6 lanes from SR. 65 Interchange to Lincoln Pkwy. (Includes interchange improvements)	2020	Planned	\$2,252,000	\$3,333,510
City of Lincoln Dept of Public Works	PLA15970	'07-00	11-00	Nicolaus Road	Widen Nicolaus Road. from 2 to 4 lanes from Airport Road. to Aviation Boulevard	2020	Programmed	\$2,250,600	\$3,331,438
City of Rocklin Division of Engineering	PLA25154	'07-00		Rocklin Road	Extend: 2 lanes from current west terminus to South Whitney Boulevard	2020	Planned	\$1,641,600	\$2,429,969
City of Rocklin Division of Engineering	PLA19401	'07-00		Rocklin Road	Widen: 6 lanes from Aguilar Road / eastbound I-80 on-ramps to west of Sierra College Boulevard	2020	Planned	\$1,600,000	\$2,368,391
City of Rocklin Division of Engineering	PLA25275	'07-00		Rocklin Road	Extend: 2 lanes from current western terminus to Whitney Boulevard (Phase II)	2020	Planned	\$1,400,000	\$2,072,342
City of Rocklin Division of Engineering	PLA17820	'07-00	11-00	Pacific Street	On Pacific Street: Construct downtown improvements.	2020	Programmed	\$8,000,000	\$11,841,954
City of Rocklin Division of Engineering	PLA17910	'07-00	11-00	Sunset Boulevard	Widen Sunset Boulevard bridge at UPRR from 4 to 6 lanes from South Whitney Boulevard to Pacific Street	2020	Programmed	\$2,600,000	\$3,848,635
City of Rocklin Division of Engineering	PLA25373	'07-00	11-00	Midas Avenue Grade Separation	Midas Avenue, from Pacific Street to Third Street, construct 2 lane grade separation of UP tracks including right of way.	2020	Programmed	\$8,750,000	\$12,952,137
City of Roseville Dept of Public Works	PLA15890	'07-00		Sunrise Avenue	Widen: 6 lanes from Sacramento County line to Madden Lane.	2020	Planned	\$5,000,000	\$7,401,221
City of Roseville Dept of Public Works	PLA15910	'07-00		Taylor Road	Widen: 4 lanes from Roseville Pkwy. to I-80.	2020	Planned	\$521,157	\$771,440
City of Roseville Dept of Public Works	PLA15911	'07-00		Taylor Road	Widen: 4 lanes from I-80 to City Limits.	2020	Planned	\$4,000,000	\$5,920,977
City of Roseville Dept of Public Works	PLA25344	'07-00		Blue Oaks	Widen: 6 lanes (from 4) from Foothill to Crocker Ranch Road. & from 1300' W/O Fiddymont to Westside	2020	Planned	\$11,000,000	\$16,282,687
City of Roseville Dept of Public Works		'07-00		Foothills Boulevard	Widen: 6 lanes from Kirby to Misty Wood (just N/O Pleasant Grove Boulevard).	2020	Planned	\$23,900,000	\$35,377,838
Placer County Dept of Public Works	PLA25127	'07-00		Baseline Road	Widen Baseline Road from 4 to 6 lanes from Watt Avenue to Sutter County Line (Western Portion).	2020	Planned	\$12,000,000	\$17,762,931

Lead Agency	SACOG Project ID	SACOG MTP	SACOG MTIP	Project Title	Project Description	Year Complete	Status	Current Year (2010) \$	Expenditure Year \$
Placer County Dept of Public Works	PLA20350	'07-00		Auburn Connector Roads	Adjacent to SR. 49 between I-80 & Dry Creek Road. - three new Local connector roads: 1) Quartz Drive Connector from SR. 49 to Locksley Lane, 2) Willow Creek Drive Connector from SR. 49 to 1st Street in Dewitt Center, & 3) Edgewood Road. Connector from SR. 49 to Alta Mesa Drive (City of Auburn) - state & Local funding only.	2020	Planned	\$3,671,000	\$5,433,977
Placer County Dept of Public Works	PLA25134	'07-00		Bell Avenue	I-80 / Bell Road. interchange: Capacity & operational improvements	2020	Planned	\$3,000,000	\$4,440,733
Placer County Dept of Public Works		07-00		Lincoln Way	Widen from 2 to 4 lanes from Russell Rd. to Ferguson Rd.	2020	Planned	\$484,000	\$716,438
Placer County Dept of Public Works	PLA15300	'07-00	11-00	Parallel Road	In Placer County, east of Route 49, from Dry Creek Road to Quartz Road, construct a 2 lane road. Name of road shall be determined in the future.	2020	Programmed	\$6,025,000	\$8,918,472
Town of Loomis Dept of Public Works	PLA25258	'07-00		Brace Road / Horseshoe Bar Road	Signalize intersection. Realign two existing intersections at the Location into one intersection, including related signalization improvements.	2020	Planned	\$600,000	\$888,147
Town of Loomis Dept of Public Works	PLA25260	'07-00		Barton Road	Widen to standard lane widths with the inclusion of bike lanes.	2020	Planned	\$2,100,000	\$3,108,513
Town of Loomis Dept of Public Works	PLA25274	'07-00		S. Holly Area	Local Road. Storm drainage Extension: In Loomis, extend Local Road. storm Drainage facility in the South Holly area. Ancillary Road. work may be included. Federal permitting may also be required as part of this project.	2020	Planned	\$400,000	\$592,098
Town of Loomis Dept of Public Works	PLA25276	'07-00		Sunrise-Loomis Subdivision	Local Road. Storm Drainage Upgrade: In Loomis, upgrade the Local Road. network storm Drainage facilities in the Sunrise-Loomis subdivision. Ancillary Road. work may be included. Federal permitting may also be required as part of this project.	2020	Planned	\$500,000	\$740,122
Town of Loomis Dept of Public Works	PLA25277	'07-00		Brace Road	Bridge Replacement: at Secret Ravine & Brace Road. Ancillary Road. work may be included.	2020	Planned	\$500,000	\$740,122
Town of Loomis Dept of Public Works	PLA25278	'07-00		Antelope Creek	Expand & Replace Culvert: along Antelope Creek at King Road., from Sierra College Boulevard to Vet Clinic. Ancillary Road. work may be included.	2020	Planned	\$600,000	\$888,147
Town of Loomis Dept of Public Works	PLA25280	'07-00		Sierra College Boulevard	Culvert Expansion: In Loomis, at Loomis Tributary & Sierra College Boulevard Ancillary Road. work may be included.	2020	Planned	\$400,000	\$592,098
Town of Loomis Dept of Public Works	PLA16350	'07-00	11-00	Horseshoe Bar Road @ I-80 Overcrossing Widening	Widen Horseshoe Bar Road. @ I-80 overcrossing 2 to 4 lanes & improve ramps.	2020	Programmed	\$15,000,000	\$22,203,664
City of Lincoln Dept of Public Works		07-00		Nelson Lane Widening	Widen to four lanes from Lincoln Bypass to Nicolas Road.	2021	Planned	\$6,000,000	\$9,236,724
City of Lincoln Dept of Public Works	PLA25303	'07-00		Fiddymont Road	Widen: 4 lanes from East Catlett to Nicolaus Road.	2022	Planned	\$20,000,000	\$32,020,644
City of Roseville Dept of Public Works	PLA15830	'07-00		Roseville Pkwy.	Widen: 4 lanes from City Limits to Sierra College Boulevard	2022	Planned	\$850,000	\$1,360,877
Placer County Dept of Public Works		07-00		New Road	Construct a new 2-lane road between Kemper Rd. and Mt. Vernon Rd.	2022	Planned	\$1,300,000	\$2,081,342
City of Lincoln Dept of Public Works	PLA20760	'07-00		Venture Drive	Widen: 4 lanes from Aviation Boulevard to Lakeside Drive	2024	Planned	\$900,000	\$1,558,509
City of Lincoln Dept of Public Works	PLA20780	'07-00		Gladding Pkwy.	New road: 2 lanes from Nicolaus Road. to East Avenue Includes overpass over UPRR & SR. 65 & connection to 12th Street	2024	Planned	\$23,000,000	\$39,828,558
City of Lincoln Dept of Public Works	PLA25164	'07-00		Joiner Pkwy.	Widen: 6 lanes from Nicolaus Road. to Ferrari Ranch Road.	2024	Planned	\$3,440,000	\$5,956,967
Placer County Dept of Public Works	PLA25136	'07-00		Northstar Drive	Widen: 4 lanes from SR267 to Sawmill Flat Road (near Truckee).	2025	Planned	\$3,234,300	\$5,824,792
Town of Loomis Dept of Public Works	PLA20510	'07-00		Sierra College Boulevard	New: 4 lane undercrossing at UPRR Crossing & Sierra College Boulevard	2025	Planned	\$30,000,000	\$54,028,305
Town of Loomis Dept of Public Works	PLA25259	'07-00		Brace Road	Widen to standard lane widths with the inclusion of bike lanes.	2025	Planned	\$1,000,000	\$1,800,944
Town of Loomis Dept of Public Works	PLA25261	'07-00		I-80	Brace Road. Bridge Modification (To Caltrans standards).	2025	Planned	\$10,000,000	\$18,009,435

Lead Agency	SACOG Project ID	SACOG MTP	SACOG MTIP	Project Title	Project Description	Year Complete	Status	Current Year (2010) \$	Expenditure Year \$	
Town of Loomis Dept of Public Works	PLA25262	'07-00		King Road	Modify the existing King Road. overcrossing to accommodate freeway access for traffic from King Road. onto WB I-80. Provide a transition auxiliary lane on I-80 from King Road. to Horseshoe Bar interchange.	2025	Planned	\$5,000,000	\$9,004,718	
Town of Loomis Dept of Public Works	PLA25269	'07-00		Taylor Road	Construct storm Drainage facility on Taylor Road. from King Road. to Sierra College Boulevard Ancillary Road. work may be included. Federal permitting may also be required as part of this project. Phase 1 is King Road. to Walnut Street, \$800,000.	2025	Planned	\$2,300,000	\$4,142,170	
City of Lincoln Dept of Public Works	PLA25310	'07-00		Wise Road	Realignment & overcrossing between SR65 Lincoln Bypass & existing SR65.	2026	Planned	\$60,000,000	\$112,378,875	
City of Colfax Dept of Public Works	PLA25146	'07-00		S. Auburn Street	Grade Crossing between Tokeyana & South Auburn Street	2027	Planned	\$3,000,000	\$5,843,701	
Placer County Dept of Public Works		07-00		Indian Hill Road	Widen from 2 to 4 lanes from Auburn City Limits to Newcastle.	2027	Planned	\$8,000,000	\$15,583,204	
Placer County Dept of Public Works	PLA15070	'07-00	11-00	Auburn Ravine Road at I-80 Overcrossing	Auburn Ravine Road overcrossing over I-80 between Bowman Road to Lincoln Way; widen overcrossing from 2 to 4 lanes.	2033	Programmed	\$29,000,000	\$71,476,751	
City of Lincoln Dept of Public Works	PLA25315	'07-00		Village 1-7, SUD A-C Local streets	Local roads for various villages & SUD including enhancements	2035	Planned	\$118,000,000	\$314,568,687	
Placer County Dept of Public Works		'07-00		16th Street	New: 4 lanes from Sacramento/Placer County Line to Baseline Road.	2035	Planned	\$7,500,000	\$19,993,772	
South Placer Regional Transportation Authority / Placer County	PLA20721	'07-00	11-00	Placer Parkway Project	New 4 lane connector (ultimate 6 lanes freeway) in 500'- to 1,000'-wide corridor connecting SR 70/99 (between Riego Road & Sankey Road) to SR 65 (Whitney Ranch Parkway). (Note: as the project proceeds, Parkway segments will be administered by different lead agencies depending upon Location of the segment. In Placer County, it will be SPRTA or Roseville &/or Placer County; in Sutter County it will be Sutter County.)	2035	Programmed	\$660,000,000	1759451979	
								2010-2015	\$329,843,662	\$383,234,830
								2016-2024	\$468,642,457	\$665,144,774
								2025-2035	\$937,034,300	\$2,392,107,332
								Total	\$1,735,520,419	\$3,440,486,936

**Table 6.1-7
Regional & Local Bridges Projects List**

Lead Agency	SACOG Project ID	SACOG MTP	SACOG MTIP	Project Title	Project Description	Year Complete	Status	Current Year (2010) \$	Expenditure Year \$
Placer County Dept of Public Works	PLA25448	07-00	11-00	Bowman Road Bridge	Bridge No. 19C0062, Bowman Road, over UPRR, BNSF rail yards & Amtrak, 0.1 mile north of 19C0061. Preliminary Engineering & replace the existing structurally deficient bridge to bring it up to current standards. No additional lanes.	2010	Programmed	\$1,875,001	\$1,875,001
Placer County Dept of Public Works	VAR10050	07-00			Bridge No. 19C0060, Auburn-Foresthill Road, over North Fork American River, east of I-80. Paint existing steel structure.	2011	Programmed	\$8,100,000	\$8,424,000
Placer County Dept of Public Works	PLA25444	07-00	11-00	Wise Road Bridge Replacement	Bridge No. 19C0035, Wise Road, over Auburn Ravine, between Millerton & Stone Road. Replace the existing 2 lane bridge with a new 2 lane bridge.	2011	Programmed	\$2,334,000	\$2,427,360
Placer County Dept of Public Works	PLA25446	07-00	11-00	Auburn-Foresthill Road Bridge	Bridge No. 19C0060A, Auburn-Foresthill Road, over North Fork American River, east of I-80. LSSRP Seismic Retrofit.	2011	Programmed	\$91,888,011	\$95,563,531
Placer County Dept of Public Works	PLA25447	07-00	11-00	Bowman Road Bridge	Bridge No. 19C0061, Bowman Road, over UPRR, BNSF rail yards & AMTRAK, 0.1 miles south of 19C0062. Preliminary Engineering & rehabilitate or replace the existing structurally deficient bridge to bring up to current standards. No additional lanes.	2011	Programmed	\$1,875,001	\$1,950,001
City of Lincoln Dept of Public Works	VAR10050	07-00			Bridge No. 19C0199R, Nicholas Road, over Markham Ravine, 0.25 mile east of Nelson Lane. Right-of-way & replace 2 lane bridge with 2 lane bridge.	2012	Programmed	\$987,193	\$1,067,748
Placer County Dept of Public Works	PLA25474	07-00	11-00	Dowd Road Bridge Replacement	Bridge No. 19C0118, Dowd Road, over Markham Ravine, 0.5 miles south of Nicolaus Road. Replace existing 2 lane structurally deficient bridge with a new 2 lane bridge.	2012	Programmed	\$4,800,000	\$5,191,680
Placer County Dept of Public Works	PLA25453	07-00	11-00	Yankee Slough Bridge Replacement	Bridge No.19C0129, Dowd Road, over Yankee Slough, just south of Dalby Road. Right-of-way & replace existing structurally deficient bridge with new 2 lane bridge.	2012	Programmed	\$2,341,000	\$2,532,026
Placer County Dept of Public Works	PLA25426	07-00	11-00	Cook Riolo Road Bridge	Bridge No. 19C0117, Cook Riolo Road, over Dry Creek, 1.0 mile south of Base Lane Road. Right-of-way & replace 2 lane bridge with a new 2 lane bridge.	2012	Programmed	\$9,146,051	\$9,892,369
Placer County Dept of Public Works	PLA20880	07-00	11-00	Walerga Road Bridge Widening	In Placer County, West of Roseville, Walerga Road at Dry Creek: replace bridge & widen from 2 to 4 lanes.	2013	Programmed	\$20,200,000	\$22,722,253
City of Lincoln Dept of Public Works		07-00		SR193 Bridge Replacement at Auburn Ravine	Reconstruct SR193 Bridge over Auburn Ravine to provide 100 year flood capacity. Increase width to provide for combined bike lanes, NEV lanes and sidewalks. Bridge will include 2-12' northbound lanes, 1-12' southbound lane. Bridge will be approximately 280' in length. Eligible for HBP funding, however application has not been submitted	2014	Planned	\$4,610,000	\$5,393,048
City of Roseville Department of Public Works	PLA25470	07-00	11-00	Oakridge Drive Bridge Replacement	Bridge No. 19C0180. In Roseville, 0.2 miles north of Cirby Way on Oakridge Drive, replace existing narrow substandard bridge over Linda Creek with wider bridge to include bike lanes & sidewalks on both sides.	2014	Programmed	\$2,500,000	\$2,924,646
City of Lincoln Dept of Public Works		07-00		Old Highway SR65 Bridge Replacement at Auburn Ravine	Reconstruct old SR65 Bridge over Auburn Ravine to provide 100 year flood capacity. Increase width to provide for combined bike lanes, NEV lanes and sidewalks. Bridge will include 2-12' northbound lanes, 1-12' southbound lane. Bridge will be approximately 280' in length. Eligible for HBP funding, however application has not been submitted.	2015	Planned	\$5,000,000	\$6,083,265
City of Roseville Department of Public Works	PLA25438	07-00	11-00	Industrial Avenue Bridge Replacement	In Roseville, on Industrial Avenue replace existing 2-lane Bridge No. 19C-0046 over Pleasant Grove Creek with a new 4-lane bridge.	2015	Programmed	\$5,000,000	\$6,083,265
Placer County Dept of Public Works	PLA25445	07-00	11-00	Hampshire Rocks Road Bridge	Bridge No. 19C0042, Hampshire Rocks, over & just south of Dry Creek Road. Preliminary Engineering, right-of-way & replace the existing functionally obsolete bridge with a new 2 lane bridge.	2015	Programmed	\$4,900,000	\$5,961,599

Lead Agency	SACOG Project ID	SACOG MTP	SACOG MTIP	Project Title	Project Description	Year Complete	Status	Current Year (2010) \$	Expenditure Year \$
Placer County Dept of Public Works	PLA25449	07-00	11-00	Down Road Bridge Replacement	Bridge No. 19C0095, Dowd Road, over Coon Creek, 0.4 mile North Wise Road. Right-of-way & replace a structurally deficient bridge with a new 2 lane bridge.	2015	Programmed	\$5,675,010	\$6,904,517
Placer County Dept of Public Works	PLA25450	07-00	11-00	Brewer Road Bridge Replacement	Bridge No. 19C0104, Brewer Road, over branch of Curry Creek, 2.2 mile north of Base Lane Road. Right-of-way & replace structurally deficient 2 lane structure with a new 2 lane structure.	2015	Programmed	\$1,760,000	\$2,141,309
Placer County Dept of Public Works	PLA25476	07-00	11-00	Brewers Road Bridge Replacement	Bridge No. 19C0112, Brewers Road, over Kings Slough, 6.0 mile north of Base Lane Road. Right-of-way & replace structurally deficient 2 lane bridge with a new 2 lane bridge.	2015	Programmed	\$2,126,001	\$2,586,605
Placer County Dept of Public Works	PLA25454	07-00	11-00	Brewer Road Bridge Replacement	Bridge No. 19C0138, Brewer Road, over Markham Ravine, 0.5 mile south of Nicolaus Road. Right-of-way & replace structurally deficient bridge with new 2 lane bridge.	2015	Programmed	\$1,568,000	\$1,907,712
Placer County Dept of Public Works	PLA25475	07-00	11-00	Haines Road Bridge Replacement	Bridge No. 19C0145, Haines Road, over Wise Canal, 0.45 mile north of Bell Road. Right-of-way & replace the existing functionally obsolete 2 lane bridge with a new 2 lane bridge.	2015	Programmed	\$4,900,000	\$5,961,599
Placer County Dept of Public Works	PLA25477	07-00	11-00	Alpine Meadows Road Bridge Replacement	Bridge No. 19C0151, Alpine Meadows Road, over Truckee River, 0.1 mile west of SR 89. Right-of-way & rehabilitation & shoulder widening of existing structurally deficient 2 lane bridge.	2015	Programmed	\$9,980,000	\$12,142,196
Placer County Dept of Public Works	PLA25458	07-00	11-00	Bridge Preventive Maintenance	PM00013, Bridge Preventive Maintenance Program, various locations in Placer County. Refer to Caltrans District 03 Local Assistance HBP web site for list of bridges.	2015	Programmed	\$893,000	\$1,086,471
City of Lincoln Dept of Public Works	PLA25022	07-00	11-00	Auburn Ravine Bike/Ped Bridge Phase 1	In Lincoln: Construction of new multi-use bridge across Auburn Ravine: Preliminary Engineering, Environmental Documentation, Permitting, & Construction of Neighborhood Electric Vehicle (NEV) & pedestrian bridge crossing Auburn Ravine. Preliminary Engineering, Environmental Documentation, & Permitting for future vehicle bridge at same Location.	2016	Programmed	\$987,193	\$1,249,114

Note: The purpose of the State SR Bridge Replacement Group Projects list is to show which projects being advanced by Local agencies have met the eligibility requirements of the federal Highway Bridge Program (HBP). The grouped project list has been prioritized for funding by Caltrans in cooperation with Local agencies. The federal HBP funding constraint is managed by Caltrans; financial constraint of Local matching funds, Local advance construction and regional STIP funds is managed by SACOG.

2010-2015	\$192,458,268	\$210,822,201
2016-2024	\$987,193	\$1,249,114
2025-2035	\$0	\$0
Total	\$193,445,461	\$212,071,315